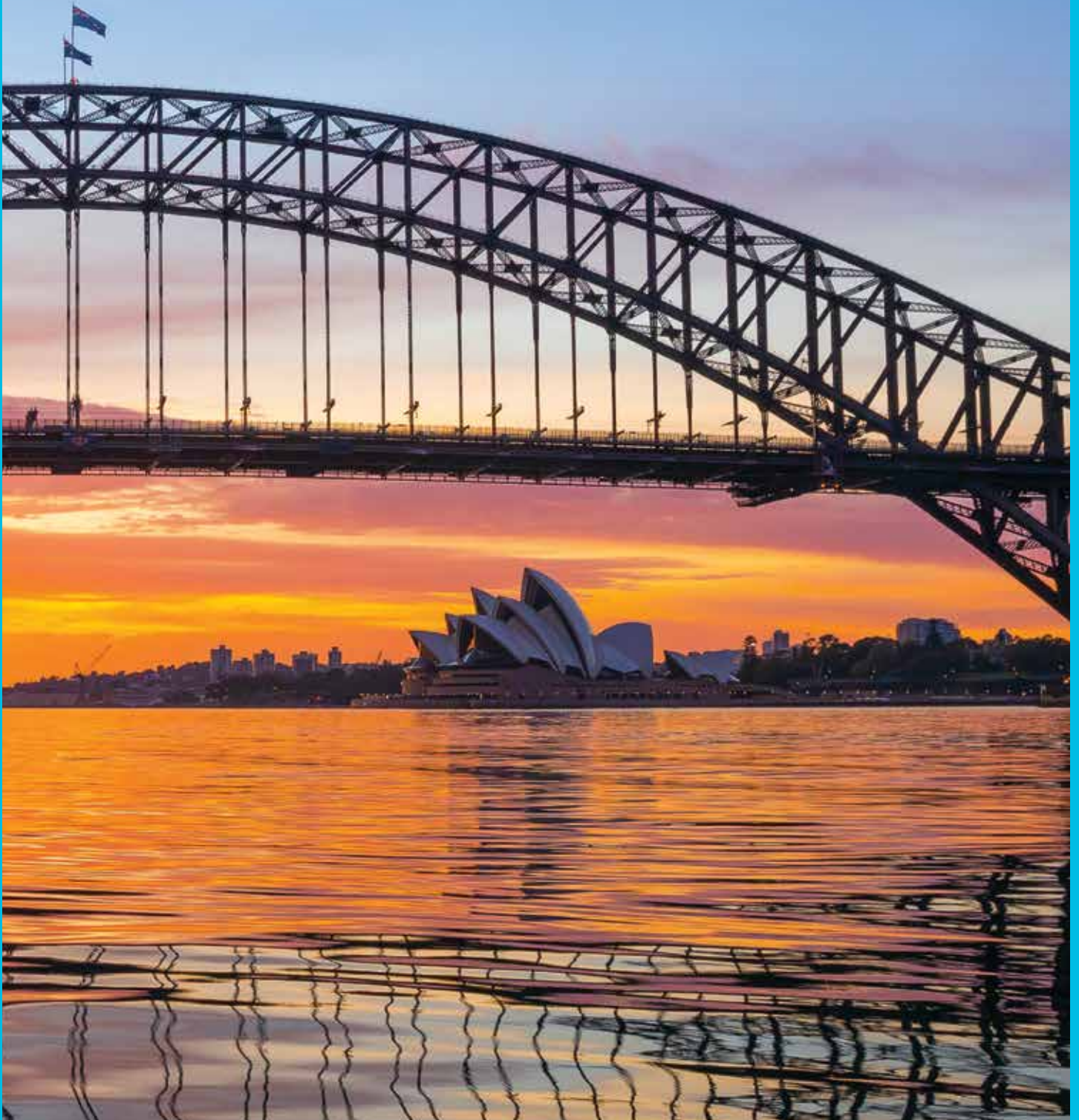


helloworld
TRAVEL
THE TRAVEL PROFESSIONALS

NEW SOUTH WALES

INCLUDING CANBERRA



VIVA
HOLIDAYS

CELEBRATING

50
Years
OF TRAVEL

EXPERIENCE NEW SOUTH WALES WITH VIVA HOLIDAYS!

Explore sophisticated Sydney, home to a sparkling harbour, iconic landmarks and a buzzing dining and nightlife scene. Indulge in gourmet food and wine in the Hunter Valley, get back to nature in the Blue Mountains and find the perfect golden beach along the coast. Slip into the Australian Capital Territory and explore some of Australia's national treasures in Canberra.

Viva Holidays is proud to be celebrating 50 years in the travel business. Trust us to make your dream New South Wales holiday a reality.

CHOOSE VIVA HOLIDAYS AND LIVE A LIFE OF TRAVEL.



Front cover image: Sydney Harbour

Image this page: Three Sisters, Echo Point Lookout, Blue Mountains

Visit Sydney between 24 May and 15 June and watch in awe as the city's iconic landmarks shine brightly for the Vivid Sydney 2024 festival



Destination NSW



Brokenwood Wines, Pokolbin, Hunter Valley

Destination NSW



Parliament House, Canberra

CONTENTS

Navigating This Brochure	5
Travel Tips	7
Experiences You'll Love	8
Car Hire	10
Rail Holidays	12
Touring	13
Sydney	14
Coastal New South Wales	27
Hunter Valley	33
Blue Mountains, Orange & Dubbo	36
Canberra	39
Accommodation Index	42
Booking Conditions	43



CELEBRATING



WHY CHOOSE VIVA HOLIDAYS

Viva Holidays has been creating exceptional worldwide holiday experiences for 50 years. Your arrangements will be managed by our travel specialists who are dedicated to servicing enquiries to your chosen destination and are experts at designing holidays to perfectly suit your travel needs. You'll always be in experienced hands when you travel with Viva Holidays.

MORE CHOICE

Our extensive product range caters for every type of holiday. Accommodation, car hire, theme parks, attractions, day and extended tours, rail tours and cruises – we've got it covered.

We have incredible deals available throughout the year, so make sure you ask your travel agent for our best price.

EXCEPTIONAL SERVICE

Exceptional customer service is behind everything we do. That's why we were recognised as the Most Outstanding Wholesaler – Product/Service at the 2023 National Travel Industry Awards. Our team are passionate about travel and providing outstanding service. Let us do the research, planning and booking to ensure your holiday is one you'll always remember.



NATIONAL TRAVEL INDUSTRY AWARDS

2023 WINNER

PEACE OF MIND

Viva Holidays is a proud member of ATAS, the Australian Federation of Travel Agents Travel Accreditation Scheme, having met the strict financial and customer service accreditation criteria. When you book your holiday with Viva Holidays, you will have peace of mind knowing that you are booking with one of Australia's most trusted travel companies.

24/7 ASSISTANCE

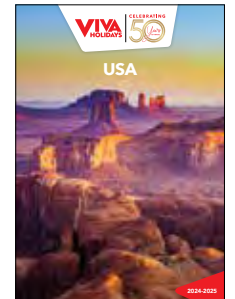
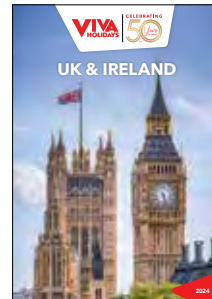
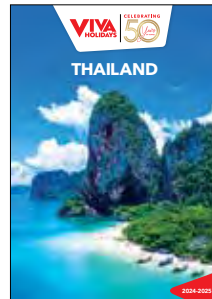
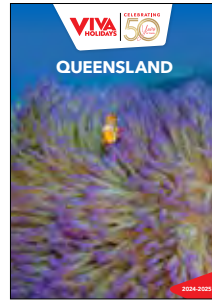
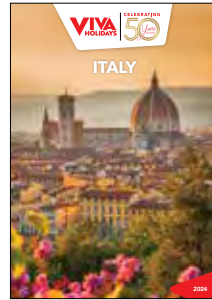
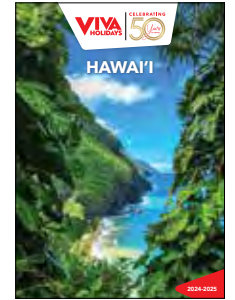
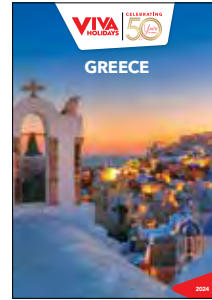
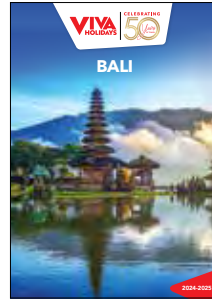
When you book with Viva Holidays, you'll never be on your own. In the event of unforeseen circumstances, our customer care team is available 24 hours a day, seven days a week.

TAILOR MADE HOLIDAYS

Whether it is climbing the Sydney Harbour Bridge, wine tasting in the Hunter Valley or exploring the Blue Mountains, our team of travel specialists can design a custom made itinerary just for you!

Let us create your dream holiday today.

LIVE A LIFE OF TRAVEL. LET VIVA HOLIDAYS TAKE YOU THERE!





Bondi Icebergs Club, Bondi Beach



Jenolan Caves, Blue Mountains



Tomaree Head Summit Walk, Port Stephens

NAVIGATING THIS BROCHURE

The following symbols should be used as a guide to assist in choosing the accommodation or touring option that best suits your needs.

Our Destination Specialists have negotiated a range of special offers including free meals, free nights, early bird booking discounts and more. Look for the following symbols on individual property listings and ask your travel agent for full details of the offer available.



Early Bird Offer

A discount off the regular room price is available at certain times of the year for advance bookings.



Kids Dining Offer

A dining offer for children is available, e.g. discounted or free meals. Child ages, meal types and conditions vary.



Free Night Offer

Receive one or more free nights for stays at certain times of the year.



Honeymoon Offer

A special bonus offer is available if you are celebrating your honeymoon. This may include sparkling wine, flowers, chocolate or fruit platters, welcome drinks, romantic dinners, spa treatments, late check-out or room upgrades. A minimum stay may be required and conditions vary. Advise your travel agent at the time of booking.



Bonus Offer

A bonus offer is available at certain times of the year, e.g. free breakfast, food and beverage credit, spa treatment, late check-out, room upgrade and more.

SYMBOL GUIDE



Properties offering free Wi-Fi access in common areas and rooms.



Properties offering in-room disabled facilities.



Properties offering family friendly facilities, which may include a kids club, kids eat free offer, family or interconnecting rooms and discounts off a second room.



Properties featuring an all inclusive price with breakfast, lunch and dinner included. Some properties may also include beverages, day excursions and activities. Conditions may apply. Ask your travel agent at the time of booking for further details.



Denotes a small group tour. The number on the symbol indicates the maximum number of passengers on a tour.

OUR RATINGS

The accommodation ratings featured in this brochure will provide a general indication of the standard of accommodation and may alter throughout the year due to a change of circumstance. These are our views and are not related to any other rating system. We recommend checking with your travel agent to find the accommodation that best suits your needs and budget.



Comfortable



Superior



Deluxe



Half rating

Walk up to Cape Byron Lighthouse, the most easterly point of Australia





TRAVEL TIPS

WHEN TO GO

New South Wales enjoys a sunny climate with mild winters and warm summers, perfect for making the most of the outdoors. New South Wales heats up during the summer months making it a great time to enjoy the many coastal beaches. The autumn months are mild bringing cooler temperatures with crisp mornings. The weather during winter is frequently cold with frosty nights. Head to the snow fields and hit the slopes over winter. Spring time sees warmer days and mild nights and is a perfect time to enjoy the many spring festivals.

GETTING AROUND

Take the time to explore and discover as you make your way around New South Wales by road. Discover rugged national parks, beautiful beaches and country towns from the comfort of your rental car. See pages 10 and 11 for car hire options.

BEACH SAFETY

New South Wales has some of the world's best beaches, however care and caution should be exercised at all times. Please remember to swim between the red and yellow flags and listen to instructions from lifesavers and lifeguards.

SCHOOL LEAVERS CELEBRATIONS

Each year from mid November to mid December, school leavers head to Byron Bay and the North Coast for School Leavers Celebrations. During this period, bonds and special conditions may apply to some properties. Check with your travel agent at time of booking.

SCHOOL HOLIDAYS 2024/25

Queensland

29 Mar – 14 Apr, 22 Jun – 7 Jul, 14 – 29 Sep, 14 Dec 24 – 27 Jan 25

New South Wales

13 – 28 Apr, 6 – 21 Jul, 28 Sep – 13 Oct, 21 Dec 24 – 2 Feb 25

Victoria

29 Mar – 14 Apr, 29 Jun – 14 Jul, 21 Sep – 6 Oct, 21 Dec 24 – 28 Jan 25

Australian Capital Territory

13 – 28 Apr, 6 – 21 Jul, 28 Sep – 13 Oct, 18 Dec 24 – 2 Feb 25

Tasmania

12 – 28 Apr, 6 – 22 Jul, 28 Sep – 13 Oct, 21 Dec 24 – 27 Jan 25

South Australia

13 – 28 Apr, 6 – 21 Jul, 28 Sep – 13 Oct, 14 Dec 24 – 27 Jan 25

Western Australia

29 Mar – 14 Apr, 29 Jun – 14 Jul, 21 Sep – 6 Oct, 14 Dec 24 – 4 Feb 25

Northern Territory

6 – 14 Apr, 22 Jun – 15 Jul, 21 Sep – 6 Oct, 14 Dec 24 – 28 Jan 25



DISTANCES BY ROAD (KM)

SYDNEY

553	ALBURY													
1144	837	BROKEN HILL												
764	1283	1486	BYRON BAY											
286	338	934	1050	CANBERRA										
525	1073	1320	240	806	COFFS HARBOUR									
392	531	759	774	399	609	DUBBO								
102	553	1042	852	329	602	287	KATOOMBA/BLUE MOUNTAINS							
164	700	1130	621	433	385	373	238	NEWCASTLE						
163	706	1090	665	440	426	333	240	64	POKOLBIN/HUNTER VALLEY					
384	927	1348	399	662	162	592	463	245	280	PORT MACQUARIE				
206	749	1170	643	483	394	414	284	58	102	248	PORT STEPHENS			
87	630	1190	703	362	458	433	164	93	95	317	139	TERRIGAL		
815	1334	1538	67	1097	291	826	900	684	716	452	628	757	TWEED HEADS	
95	516	1108	881	248	642	451	165	236	275	493	313	193	928	WOLLONGONG

Distances should be used as a guide only.

TEMPERATURE & RAINFALL

Sydney	J	F	M	A	M	J	J	A	S	O	N	D
Temperature (max °C)	26	26	25	23	20	17	16	18	20	22	24	26
Average rainfall (mm)	116	113	110	121	117	128	80	91	60	79	101	81
Hunter Valley	J	F	M	A	M	J	J	A	S	O	N	D
Temperature (max °C)	30	29	27	24	20	17	17	19	22	25	26	29
Average rainfall (mm)	82	92	76	63	54	61	40	39	45	57	65	75
Byron Bay	J	F	M	A	M	J	J	A	S	O	N	D
Temperature (max °C)	28	28	27	25	22	20	19	20	22	23	25	26
Average rainfall (mm)	165	189	203	189	181	165	107	91	66	108	120	147
Dubbo	J	F	M	A	M	J	J	A	S	O	N	D
Temperature (max °C)	33	32	29	25	20	16	15	17	21	25	29	32
Average rainfall (mm)	61	53	48	44	47	50	44	44	43	49	52	50
Canberra	J	F	M	A	M	J	J	A	S	O	N	D
Temperature (max °C)	29	28	25	21	16	13	12	13	17	20	23	26
Average rainfall (mm)	54	58	54	53	45	40	41	51	56	65	65	52

EXPERIENCES YOU'LL LOVE

The best part of any journey is the experiences you have along the way, leaving you with memories to relive long after the holiday is over.

New South Wales has countless amazing things to see and do. Here are some of our favourites to inspire your wanderlust.



NATURAL WONDERS

Inland New South Wales is home to some awe-inspiring natural sights. Kosciuszko National Park, with Australia's tallest peak, spoils you with snow sports, hiking trails and mountain biking in the Snowy Mountains, while the Blue Mountains National Park is famous for the Three Sisters, Wentworth Falls and Jenolan Caves. Visit Mungo National Park and explore one of the world's most significant archaeological sites where the Mungo Man was discovered. The isolated lunar landscapes of this park are other-worldly and are not to be missed.



SYDNEY'S ICONS

No trip to Sydney would be complete without seeing the iconic Sydney Opera House and the Harbour Bridge. The Sydney Opera House is a beautiful piece of architecture that has been a symbol of Australia since the mid-1950s. Admire this performing arts centre up close – wander around it, take a backstage tour or see a performance. Affectionately known as 'the coat hanger', the Sydney Harbour Bridge is also a must-see. Climb the 200 steps to the Pylon Lookout for sensational views of the harbour or do the BridgeClimb to the very summit of the bridge.



HUNTER VALLEY WINE REGION

Journey to the Hunter Valley wine region and indulge in the fantastic wine that makes this beautiful region famous. Gourmet produce, cheeses, chocolates, craft beers, day spas and the wonderful Hunter Valley Gardens are the perfect companions to the Hunter Valley's renowned wines. With fresh air, rolling hills and vineyards as far as the eye can see, it is the countryside escape of your dreams.



Take in the spectacular views of the Sydney Harbour Bridge from Barangaroo Reserve



Tourism Australia

BEACH CULTURE

New South Wales is blessed with beautiful beaches. People-watch at famous Bondi Beach or take the little ones to calmer waters at Manly, Forrester's Beach near Terrigal or Nelson Bay in Port Stephens. Take a dip in one of 100 iconic ocean pools dotted along the coast – try Bondi, Wollongong or Wylie's Baths at Coogee. Surfers will love riding the waves at some of the best surf beaches in the country, particularly in Cronulla, Newcastle and Bondi. Even Sydney Harbour offers appealing beaches. Try Camp Cove at Watsons Bay or Milk Beach at Vaucluse.



Port Stephens

Destination NSW

CRUISE THE HARBOUR

Spectacular Sydney Harbour is the epicentre of the city, and a cruise is the best way to truly appreciate its beauty. Explore the harbour on the city's recognisable green and gold ferries as you cruise to Luna Park, Taronga Zoo or Manly. Enjoy a lunch cruise or celebrate a special occasion with a sumptuous sunset dinner cruise. Cruise around the Sydney Opera House and beneath the majestic Sydney Harbour Bridge and take in the sights from the water. The harbour comes alive for events such as Australia Day and New Year's Eve when Sydneysiders take to the water to celebrate.



Sydney Harbour

Destination NSW/Hugh S Cleverly

SHOP 'TIL YOU DROP

Sydney is a mecca for lovers of fashion, food and everything in between with countless shopping malls, boutique streets and markets for you to explore. Head to the Queen Victoria Building, Pitt Street Mall and Westfield Sydney in the city centre. In Barangaroo, you will find many boutiques to explore before enjoying a bite to eat and The Intersection in Paddington is a stylish shopping hub. Located in the heart of Sydney's Chinatown, Market City and Sydney's famous Paddy's Markets are a combined shopping experience you must try.



Paddington

Destination NSW

CAR HIRE



AVIS

Why not add Avis to your travel plans and make the most of your holiday by enjoying the flexibility and convenience that an Avis car rental provides.

Situated at all major airport and city locations and offering a wide range of late model vehicles to choose from, all at great rates, renting with Avis is sure to make your holiday escape more enjoyable. All Avis vehicles are air-conditioned and come with Mechanical Breakdown Assistance. Plus you get unlimited kilometres in Metropolitan and Country areas as well as free maps to help you find your destination.

Includes:

- Loss Damage Waiver
- Administration Fee
- Vehicle Registration Fee
- GST
- Concession Recovery Fee/Premium Location Surcharge
- Excess Reduction (Zero Excess option)
- All vehicles include: air-conditioning, ABS, dual airbags and CD/MP3

Car rentals commencing in Metropolitan and Country locations include unlimited kilometres. Rentals commencing in Remote locations include 100 kilometres per day with excess kilometres charged at 27.5c per kilometre.

Does Not Include:

- Excess Reduction (Basic Excess option)
- Fuel
- One way rental fees
- Tolls

Excess:

An Excess of \$5,445* applies to drivers of all vehicles, with the exception of Group W, which has an Excess of \$5,760*. Optional Excess Reduction can be purchased direct for an additional fee of \$42.69* per day, or \$48.64* per day for Group W. This fee reduces the Excess to \$838*, or \$1,152* for Group W. Or select the Zero Excess option to reduce the excess to zero, at participating locations only. All prices above are inclusive of administration fee, credit card surcharge and GST, and are subject to Avis Rental Terms and Conditions.

Restricted Access:

Vehicles may not be driven above the snow line this includes Jindabyne in New South Wales from the beginning of June until the end of September.

Based on per vehicle per day (24 hour hire period). Minimum age restrictions apply. A full driver's licence, credit card and security bond is required on collection. Additional driver fees apply. Vehicles are subject to availability and a similar vehicle to those pictured may be substituted. Not all vehicles are available at all locations. Check with your travel agent for details.



Small Suitcase Large Suitcase

TOYOTA COROLLA (or similar)

GROUP C

- Auto
- 5 door hatch
- 4 cylinder
- USB
- Bluetooth
- Cruise control
- Reversing camera



x 5

DOWNTOWN

AIRPORT

BASIC EXCESS

1-3
DAYS

4-6
DAYS

7+
DAYS

ZERO EXCESS

1-3
DAYS

4-6
DAYS

7+
DAYS

\$83* \$77* \$71* \$113* \$106* \$101*

\$104* \$96* \$89* \$133* \$126* \$118*

TOYOTA COROLLA ASCENT (or similar)

GROUP D

- Auto
- 5 door sedan
- 4 cylinder
- USB • Bluetooth
- Smart cruise control
- Reversing camera
- Smartphone connectivity



x 5

DOWNTOWN

AIRPORT

BASIC EXCESS

1-3
DAYS

4-6
DAYS

7+
DAYS

ZERO EXCESS

1-3
DAYS

4-6
DAYS

7+
DAYS

\$93* \$82* \$80* \$122* \$112* \$109*

\$116* \$103* \$99* \$145* \$132* \$129*

TOYOTA CH-R (or similar)

GROUP S

- Auto
- 5 door SUV
- 4 cylinder
- USB • Bluetooth
- Smart cruise control
- Reversing camera
- Smartphone connectivity



x 5

DOWNTOWN

AIRPORT

BASIC EXCESS

1-3
DAYS

4-6
DAYS

7+
DAYS

ZERO EXCESS

1-3
DAYS

4-6
DAYS

7+
DAYS

\$93* \$82* \$80* \$122* \$112* \$109*

\$116* \$103* \$99* \$145* \$132* \$129*

KIA SPORTAGE (or similar)

GROUP K

- Auto
- 5 door SUV
- 4 cylinder
- USB • Bluetooth
- Smart cruise control
- Reversing camera
- Smartphone connectivity



x 5

DOWNTOWN

AIRPORT

BASIC EXCESS

1-3
DAYS

4-6
DAYS

7+
DAYS

ZERO EXCESS

1-3
DAYS

4-6
DAYS

7+
DAYS

\$101* \$95* \$87* \$130* \$124* \$116*

\$126* \$119* \$108* \$156* \$148* \$138*

KIA CARNIVAL (or similar)

GROUP V

- Auto
- 5 door SUV
- 4 cylinder
- USB • Bluetooth
- Smart cruise control
- Reversing camera
- Smartphone connectivity



x 8

DOWNTOWN

AIRPORT

BASIC EXCESS

1-3
DAYS

4-6
DAYS

7+
DAYS

ZERO EXCESS

1-3
DAYS

4-6
DAYS

7+
DAYS

\$130* \$116* \$111* \$159* \$145* \$141*

\$162* \$145* \$139* \$192* \$174* \$168*

TOYOTA KLUGER (or similar)

GROUP H

- Auto
- 5 door SUV
- 4/6 cylinder
- USB • Bluetooth
- Smart cruise control
- Reversing camera
- Smartphone connectivity



x 5

DOWNTOWN

AIRPORT

BASIC EXCESS

1-3
DAYS

4-6
DAYS

7+
DAYS

ZERO EXCESS

1-3
DAYS

4-6
DAYS

7+
DAYS

\$132* \$127* \$120* \$189* \$184* \$177*

\$165* \$159* \$150* \$222* \$216* \$207*

TOYOTA PRADO (or similar)

GROUP W

- Auto
- 5 door 4WD
- 4/6 cylinder
- Cruise control
- Reversing camera
- Smartphone connectivity



x 7

DOWNTOWN

AIRPORT

BASIC EXCESS

1-3
DAYS

4-6
DAYS

7+
DAYS

ZERO EXCESS

1-3
DAYS

4-6
DAYS

7+
DAYS

\$167* \$150* \$143* \$224* \$207* \$200*

\$209* \$187* \$179* \$266* \$244* \$236*



BUDGET

Budget Rent a Car is renowned for meticulously maintained vehicles and quality service. Offering a wide range of cars, 4WDs and mini-vans Budget has the right vehicle choice for your holiday needs.

Budget's car hire fleet is constantly being updated to ensure you enjoy the best in comfort and safety in late model vehicles and at competitive prices. Driving is one of the best ways to see the sights of Australia, and Budget offers customers the convenience of having locations at airports and cities Australia-wide so you are never far from a pick-up point or friendly service.

Includes:

- Loss Damage Waiver
- Administration Fee
- Vehicle Registration Fee
- GST
- Concession Recovery Fee/Premium Location Surcharge
- Excess Reduction (Zero Excess option)
- All vehicles include: air-conditioning, ABS, six airbags and CD/MP3

Car rentals commencing in Metropolitan and Country locations include unlimited kilometres. Rentals commencing in Remote locations include 100 kilometres per day with excess kilometres charged at 27.5c per kilometre.

Does Not Include:

- Excess Reduction (Basic Excess option)
- Fuel
- One way rental fees
- Tolls

Excess:

An Excess of \$5,445* applies to drivers of all vehicles, with the exception of Group W, which has an Excess of \$5,760*. Optional Excess Reduction can be purchased direct for an additional fee of \$42.69* per day, or \$48.46* per day for Group W. This fee reduces the Excess to \$838*, or \$1,152* for Group W. Or select the Zero Excess option to reduce the excess to zero, at participating locations only. All prices above are inclusive of administration fee, credit card surcharge and GST, and are subject to Budget Rental Terms and Conditions.

Restricted Access:

Vehicles may not be driven above the snow line this includes Jindabyne in New South Wales from the beginning of June until the end of September.

Based on per vehicle per day (24 hour hire period). Minimum age restrictions apply. A full driver's licence, credit card and security bond is required on collection. Additional driver fees apply. Vehicles are subject to availability and a similar vehicle to those pictured may be substituted. Not all vehicles are available at all locations. Check with your travel agent for details.



Small Suitcase Large Suitcase

KIA CERATO S HATCH (or similar)

GROUP C

- Auto
- 5 door hatch
- 4 cylinder
- USB • Bluetooth
- Cruise control
- Reversing camera or sensors



	1-3 DAYS	4-6 DAYS	7+ DAYS	BASIC EXCESS			ZERO EXCESS		
				1-3 DAYS	4-6 DAYS	7+ DAYS	1-3 DAYS	4-6 DAYS	7+ DAYS
DOWNTOWN	\$72*	\$67*	\$62*	\$95*	\$90*	\$85*			
AIRPORT	\$90*	\$83*	\$77*	\$113*	\$106*	\$100*			

KIA CERATO SEDAN (or similar)

GROUP D

- Auto
- 4 door sedan
- 4 cylinder
- USB
- Bluetooth
- Cruise control
- Reversing camera or sensors



	1-3 DAYS	4-6 DAYS	7+ DAYS	BASIC EXCESS			ZERO EXCESS		
				1-3 DAYS	4-6 DAYS	7+ DAYS	1-3 DAYS	4-6 DAYS	7+ DAYS
DOWNTOWN	\$80*	\$71*	\$69*	\$103*	\$94*	\$92*			
AIRPORT	\$100*	\$89*	\$86*	\$123*	\$112*	\$109*			

KIA STONIC (or similar)

GROUP S

- Auto
- 5 door SUV
- 4 cylinder
- USB
- Bluetooth
- Smart cruise control
- Smartphone connectivity



	1-3 DAYS	4-6 DAYS	7+ DAYS	BASIC EXCESS			ZERO EXCESS		
				1-3 DAYS	4-6 DAYS	7+ DAYS	1-3 DAYS	4-6 DAYS	7+ DAYS
DOWNTOWN	\$80*	\$71*	\$69*	\$103*	\$94*	\$92*			
AIRPORT	\$100*	\$89*	\$86*	\$123*	\$112*	\$109*			

KIA SPORTAGE (or similar)

GROUP K

- Auto • 5 door SUV
- 4 cylinder
- USB • Bluetooth
- Smart cruise control
- Reversing camera or sensors
- Smartphone connectivity



	1-3 DAYS	4-6 DAYS	7+ DAYS	BASIC EXCESS			ZERO EXCESS		
				1-3 DAYS	4-6 DAYS	7+ DAYS	1-3 DAYS	4-6 DAYS	7+ DAYS
DOWNTOWN	\$90*	\$85*	\$78*	\$113*	\$108*	\$100*			
AIRPORT	\$113*	\$107*	\$97*	\$136*	\$129*	\$120*			

HYUNDAI STARIA (or similar)

GROUP V

- Auto
- 5 door van
- 4/6 cylinder
- USB
- Bluetooth
- Cruise control
- Reversing camera or sensors



	1-3 DAYS	4-6 DAYS	7+ DAYS	BASIC EXCESS			ZERO EXCESS		
				1-3 DAYS	4-6 DAYS	7+ DAYS	1-3 DAYS	4-6 DAYS	7+ DAYS
DOWNTOWN	\$112*	\$100*	\$96*	\$134*	\$122*	\$118*			
AIRPORT	\$139*	\$124*	\$119*	\$162*	\$147*	\$142*			

TOYOTA KLUGER (or similar)

GROUP H

- Auto
- 5 door SUV
- 4/6 cylinder
- USB
- Bluetooth
- Reversing camera or sensors



	1-3 DAYS	4-6 DAYS	7+ DAYS	BASIC EXCESS			ZERO EXCESS		
				1-3 DAYS	4-6 DAYS	7+ DAYS	1-3 DAYS	4-6 DAYS	7+ DAYS
DOWNTOWN	\$115*	\$111*	\$105*	\$168*	\$164*	\$158*			
AIRPORT	\$144*	\$139*	\$131*	\$197*	\$192*	\$184*			

TOYOTA PRADO (or similar)

GROUP W

- Auto
- 5 door 4WD
- 4/6 cylinder
- USB
- Bluetooth



	1-3 DAYS	4-6 DAYS	7+ DAYS	BASIC EXCESS			ZERO EXCESS		
				1-3 DAYS	4-6 DAYS	7+ DAYS	1-3 DAYS	4-6 DAYS	7+ DAYS
DOWNTOWN	\$144*	\$129*	\$123*	\$197*	\$182*	\$177*			
AIRPORT	\$179*	\$161*	\$154*	\$233*	\$214*	\$207*			

VINTAGE RAIL JOURNEYS

Step back in time and travel in style aboard the restored 1960s 'Aurora Australis' sleeping train. Celebrate Australia's diverse history and rich culture with visits to regional towns, gardens and attractions. Travel on rail lines which don't have scheduled passenger services, making this a real adventure.

By day, relax in the comfort of your compartment or mingle with fellow guests in the dining or lounge carriages. Enjoy regional cuisine, freshly prepared by onboard chefs using locally sourced produce. The lounge car is the perfect place to enjoy a pre or post dinner drink or watch the passing scenery.



Three Sisters, Blue Mountains



RIVERINA RAIL TOUR 5 DAYS

Day 1: Sydney to Goulburn (LD) Depart on the 'Aurora Australis' and journey to Goulburn. Explore the sights of Goulburn, choosing from one of three off-train excursions. This evening enjoy dinner on board.

Day 2: Goulburn to Griffith (BD) Travel to Coolamon and spend time discovering the heritage museums and buildings along the town's main street.

Day 3: Griffith to Temora (BD) This morning transfer by coach to the Piccolo Family Farm and enjoy a delicious breakfast. After breakfast, enjoy an off-train experience

of the region's local wineries and farms. Reboard the train for the journey to Temora.

Day 4: Temora to Orange (BLD) Explore the town of Temora, visiting the Temora Rural and Ambulance Museum or the Temora Aviation Museum. After your tour, reboard the train for your journey to Orange.

Day 5: Orange to Sydney (B) Journey towards the Blue Mountains where you will enjoy a guided tour before reboarding for the return to Sydney.

(B = breakfast, L = lunch, D = dinner)

From **\$4695*** per person twin share

5 DAYS | SYDNEY TO SYDNEY

OPERATOR: Vintage Rail Journeys

TRAVEL TYPE: Escorted rail

DEPARTS: 7 Apr, 25 Aug, 22 Sep 24; 16 Mar 25

HIGHLIGHTS

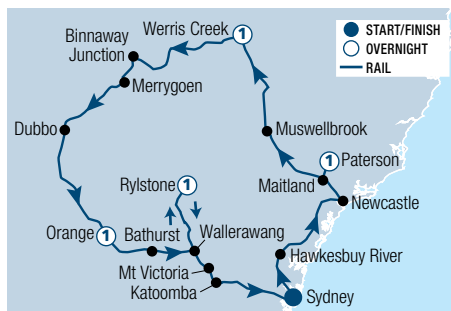
- See the sights and historic offerings of Goulburn
- Taste the acclaimed wines of the Riverina
- Explore the vibrant Blue Mountains villages and see the majestic Three Sisters

INCLUDES

- 4 nights twinette or roomette accommodation on board Aurora Australis
- Meals as specified
- Water, soft drinks and juice
- Tours as specified
- Services of a Guest Attendant



Audrey Wilkinson Vineyard, Pokolbin



GOLDEN WEST RAIL TOUR 5 DAYS

Day 1: Sydney via The Hawkesbury to Paterson (LD) Board the 'Aurora Australis' and journey to the spectacular Hawkesbury River. Join the famous 'Riverboat Postman' for a lunch cruise. Continue your rail journey to Maitland.

Day 2: Paterson via Hunter Valley to Werris Creek (BD) Enjoy one of three off-train excursions in the Hunter Valley before continuing your journey to Werris Creek.

Day 3: Werris Creek via Binnaway Junction to Orange (BLD) Take a private tour of the Werris Creek Railway Journey Museum before a coach tour of the Liverpool Plains. Travel to Orange.

Day 4: Orange via Bathurst to Rylstone (BLD) Visit Hillside Harvest, a third-generation family run orchard. Enjoy a delicious breakfast with the owners. Next, take a coach tour of Orange before travelling on to Bathurst and tour Abercrombie House. Later travel to Rylstone.

Day 5: Rylstone to Sydney (BL) Explore Rylstone and surrounds before reboarding the train in time for lunch. Travel back to Sydney via Katoomba.

(B = breakfast, L = lunch, D = dinner)

From **\$4695*** per person twin share

5 DAYS | SYDNEY TO SYDNEY

OPERATOR: Vintage Rail Journeys

TRAVEL TYPE: Escorted rail

DEPARTS: 21 Apr, 8 Sep, 6 Oct, 3 Nov 24; 2, 30 Mar 25

HIGHLIGHTS

- Cruise the picturesque Hawkesbury River aboard the 'Riverboat Postman'
- Wine tasting in the Hunter Valley
- Visit Hillside Harvest in Orange
- Tour the Liverpool Plains

INCLUDES

- 4 nights twinette or roomette accommodation on board Aurora Australis
- Meals as specified
- Water, soft drinks and juice
- Tours as specified
- Services of a Guest Attendant

* FROM PRICES ARE A GUIDE ONLY, subject to change and availability and are in Australian Dollars. Prices are per person twin share, unless otherwise specified and based on the lowest room category and travel in low season. For full terms and conditions, refer to the Booking Conditions on the inside back cover of this brochure.

ULTIMATE JOURNEYS

BY VIVA HOLIDAYS



Australian Parliament House



National Gallery of Australia

Image courtesy of Cultural Attractions Of Australia

AUSTRALIA'S NATIONAL TREASURES

4 DAYS/3 NIGHTS



Day 1: Thursday – Canberra (D)

Be met on arrival at Canberra Airport and transferred to your hotel. The remainder of the day is at leisure.

Tonight, a truly memorable experience awaits at the National Gallery of Australia. Enjoy a glass of sparkling wine, then join an exclusive after-hours tour to discover iconic works from the Gallery's extraordinary collection, including *Blue* poles by Jackson Pollock. Continue to the Skyspace Garden to enjoy a cocktail inspired by James Turrell's *Within without*, together with canapés and a sumptuous grazing table of locally sourced produce. Later, a bespoke three course dinner will be served with local wines.

Day 2: Friday – Canberra (BD)

Enjoy a leisurely breakfast at the hotel, before a visit to Parliament House. This once-in-a-lifetime private tour provides you with behind-the-scenes access to rarely seen spaces in one of Australia's most significant buildings. Visit off-limit spaces including private courtyards, the corridors of power and the Press Gallery.

Afterwards, enjoy a dining experience usually reserved for visiting dignitaries as in-house chefs prepare a traditional High Tea with a contemporary twist.

This afternoon, head to the Australian War Memorial and join an expert guide for a private tour of the Australian War Memorial's Commemorative Courtyard. You'll hear stories of courage, sacrifice, devotion, and mateship behind the over 102,000 names on the Australian Roll of Honour. Pay your respects and place a poppy on the Tomb of the Unknown Australian Soldier. Next, join one of the Memorial's curators for a private exploration of the unique collection of memorabilia, rare and beautiful letters, photographs, and diaries.

Later, gather for the poignant Last Post Ceremony. The ceremony begins with the Australian national anthem, followed by the haunting sounds of the piper's lament.

Listen to the moving story behind one of the names on the Roll of Honour and the recital of the Ode by a member of the Australian Defence Force. The ceremony concludes with the sounding of the Last Post.

Tonight, enjoy a three course feasting menu at Capitol Bar and Grill.

Day 3: Saturday – Canberra (BL)

Enjoy breakfast before heading off to explore the cool climate wineries of the Canberra District.

The first stop of the day is Brindabella Hills Vineyard, situated on a ridge above the Murrumbidgee. Over the past few years, their Chardonnay and Shiraz wines have won many national 'boutique winery' awards and we will sample some of these wines at their Cellar Door.

Next, head to Shaw Wines. Shaw's attentive and knowledgeable staff will guide you through a seated tasting of wines in the upstairs tasting area. After, enjoy a share-style lunch at Olleyville at Shaw Vineyard Estate.

After lunch, travel the short distance to McKellar Ridge Estate, a boutique winery and vineyard producing premium award-winning, handcrafted wines. Meet winemakers John and Marina. Learn about the history of the vineyard and how John turned his dream of re-establishing a family tradition of wine production.

And for a fitting end to the day, drop by Big River Distilling Co for a Distillery tour and sample a tasting paddle of three gins with a grazing platter.

This evening is free to explore Canberra's thriving bar and restaurant scene or enjoy a relaxing evening in.

Day 4: Sunday – Canberra (B)

Sadly, all good things must come to an end. Enjoy a final leisurely breakfast before your private transfer to Canberra Airport for your flight home.

(B = breakfast, L = lunch, D = dinner)

From **\$4299*** per person twin share

4 DAYS | CANBERRA TO CANBERRA

OPERATOR: Ultimate Journeys by Viva Holidays

TRAVEL TYPE: Escorted Small Group

DEPARTS: 18 Oct 24

HIGHLIGHTS

- Exclusive after-hours tour of the National Gallery of Australia's extraordinary collection
- Exclusive bespoke dining experience at the National Gallery of Australia
- Go behind the scenes at Parliament House
- Observe the poignant Last Post Ceremony at the Australian War Memorial
- Visit three of Canberra's cool climate wineries

INCLUDES

- 3 nights accommodation at QT Canberra in a QT Superior King Room
- Meals as specified
- Private tour at the National Gallery of Australia
- Private curated tour through the Sculpture Garden
- Private Behind the Scenes Tour of Parliament House
- Private guided tour of the Australian War Memorial and Last Post ceremony
- Wine tasting at Brindabella Hills Winery, Shaw Wines and McKellar Ridge Estate
- Gin tasting paddle at Big River Distilling Co
- Return private car transfer from Canberra Airport
- Private group mini-van transfers throughout
- Services of a Tour Leader and expert guides/drivers



Australian War Memorial

Visit Canberra



Australian War Memorial

Visit Canberra



Olleyville at Shaw Vineyard Estate

Visit Canberra



First Fleet Park, The Rocks

Destination NSW

SYDNEY

Set around the world's largest natural harbour, Sydney is a thriving city of urban sophistication, world-class restaurants and a vibrant arts and culture scene. Explore the exhibits at the Art Gallery of New South Wales and the Australian Museum or reserve tickets to world famous musicals and shows in the city's theatres. If you love shopping, you won't have to go far for the best that Sydney has to offer. Conquer the malls and arcades including Pitt Street Mall, Westfield Sydney and the Queen Victoria Building.

SEE

- Take in amazing views from 250 metres above the city streets at The Sydney Tower Eye
- Watch as artwork and images of Aboriginal artists illuminate the sales of the Sydney Opera House at sunset daily

DO

- Sit on Mrs Macquarie's Chair and enjoy the views from this landmark dating back to 1810
- Explore five floors of contemporary art at the Art Gallery of New South Wales

EAT & DRINK

- Enjoy a cocktail at Opera Bar, located right on the harbour with fabulous views
- Dine on authentic Chinese cuisine in the country's largest Chinatown

WHAT'S ON

Vivid Sydney

24 May to 15 June

State of Origin – Game 1

5 June

Sydney Film Festival

5 to 16 June

NRL Grand Final

6 October

Sydney to Hobart to Yacht Race

26 December

Mardi Gras

13 February to 1 March



The Rocks Markets

Tourism Australia/Anson Smart



Pitt Street Mall

Destination NSW



Dixon Street, Chinatown

Destination NSW

REF.	HOTELS	PAGE
1	Adina Apartment Hotel Bondi Beach	26
2	Adina Apartment Hotel Coogee	26
3	Adina Apartment Hotel Sydney, Darling Harbour	22
4	Capella Sydney	24
5	Crown Towers Sydney	23
6	Crowne Plaza Sydney Darling Harbour	22
7	Four Seasons Hotel Sydney	24
8	Harbour Rocks Hotel Sydney	25
9	Holiday Inn Darling Harbour	20
10	Holiday Inn Potts Point Sydney	20

REF.	HOTELS	PAGE
11	Ibis Styles Sydney Central	20
12	InterContinental Sydney	24
13	Mercure Sydney	21
14	Metro Aspire Hotel Sydney	21
15	Ovolo Woolloomooloo	25
16	Rydges Darling Square Apartment Hotel	22
17	Rydges World Square Sydney	23
18	Shangri-La Hotel, Sydney	25
19	Vibe Hotel Sydney	21
20	Wildlife Retreat at Taronga	26
21	The Woolstore 1888 by Ovolo	25

SYDNEY TOURS



AIRPORT COACH TRANSFER

Get your Sydney holiday off to a great start with a door to door coach transfer service operated by Royale Shuttle Transfers.

Royale Shuttle Transfers provides a personalised and professional coach shuttle service between Sydney Airport and Sydney CBD accommodation properties. The friendly driver will meet you at a designated meeting point after you collect your bags and will transfer you to your accommodation in modern air-conditioned comfort.

Includes:

- Transfer to all Sydney CBD accommodation properties
- Meets all pre-booked passengers arriving at Sydney Airport, 7 days a week
- Smaller coaches designed to access most accommodation driveways, ensuring you receive personalised door to door service
- Maximum 20 passengers means fewer drop-offs along the way
- Personalised and friendly service

Operator: Royale Shuttle Transfers

	Adult	Child 4-12 yrs
Sydney CBD	\$33* [^]	\$23* [^]

[^]Price based on per person one way to/from Sydney Airport between 6am and 6pm.



PRIVATE AIRPORT TRANSFERS

Arrive in style with a private car transfer. With a history of excellence in chauffeured limousines, Royale Limousines is the ultimate in luxury and style. Whether you are travelling for business or pleasure, you are always guaranteed first class service.

The Royale Limousines fleet is made up of luxury vehicles including BMW, Mercedes-Benz, Holden Caprice and Lexus Sedans. Larger groups and tours can be catered for with seven seater mini-buses through to 54 seater luxury coaches, available on request. This service is available 24 hours a day, 7 days a week.

Services Available:

- Airport, casino, dinner and theatre transfers
- Short and extended tours available for sightseeing, vineyards, golf trips and shopping
- Professional, uniformed chauffeur service
- All size vehicles available • Children catered for

Operator: Royale Limousines

	Sedan 1 to 2 People	Premium Sedan 1 to 2 People	People Mover 1 to 4 People	Mini Coach 1 to 12 People
Inner City Transfer	\$120* [^]	\$135* [^]	\$168* [^]	\$224* [^]
Sydney Airport to/ from Sydney CBD	\$156* [^]	\$198* [^]	\$216* [^]	\$279* [^]

[^]Price based on per vehicle, one way.



BACKSTAGE TOUR

Go behind closed doors and experience the Opera House from behind the scenes. Venture backstage through the corridors to rehearsal spaces and into the orchestra pit before enjoying breakfast in the exclusive domain of cast and crew, the Green Room. From pulleys to props, sequins to sound-checks, see through nooks and crannies not known to the public.

Includes:

- Guided Backstage Tour
- Breakfast in the Green Room

Operator: Sydney Opera House

Duration: 2 hours

Departs: Thu to Mon from the Stage Door, Sydney Opera House at 6:45am

Not suitable for children under 10 yrs. Enclosed shoes required.

	Adult/Child 10+ yrs
Guided Tour	\$190*



SYDNEY OPERA HOUSE TOUR

Step beneath the sails, and discover what makes the Opera House so inspiring. Explore the building with knowledgeable guides, discovering secrets and stories, and visiting iconic theatres and foyers that bring to life over 1,800 performances each year.

Includes:

- 60 minute guided tour
- Audio headsets
- Main meal with 1 beverage at your choice of House Canteen or Opera Bar (Tour & Dine Option)

Operator: Sydney Opera House

Duration: Tour: 60 minutes

Tour & Dine: 2 hours

Departs: Daily from the Welcome Centre, Sydney Opera House between 9am and 5pm (block out dates apply)

	Adult	Child 5-15 yrs
Guided Tour	\$45*	\$25*
Tour & Dine	\$85*	\$45*



VIP EXPERIENCE PACKAGES

Enjoy a one hour VIP tour of the iconic Sydney Opera House. Explore beneath the sails and venture to theatres ahead of the night's performance. Indulge in a two course dining experience, and soak up the atmosphere and views from one of Sydney's best restaurants.

Includes:

- 1 hour VIP guided tour
- 2 course dinner with 2 drinks at Midden Restaurant or Bennelong Restaurant

Operator: Sydney Opera House

Duration: 4 hours

Departs: The Lounge, Sydney Opera House, Upper level at 4:15pm
Midden Experience: Daily
Bennelong Experience: Wed to Sat

	Adult
Midden Experience	\$199*
Bennelong Experience	\$330*



TARONGA ZOO

Located just 12 minutes from the city by ferry, Taronga Zoo boasts spectacular panoramic views of Sydney Harbour. Admission includes access to over 25 keeper talks and shows to better acquaint guests with the 4,000 native and exotic animals that call the zoo home. Or make the most of your visit and stay overnight at the Wildlife Retreat at Taronga. Refer to page 26 for details.

Includes:

- Daily Free Flight Bird and Seal presentations
- Informative Keeper Talks throughout the day

Activities at an extra charge:

- Daily 'behind-the-scenes' tours – Wild Australia Experience and Aussie Backyard Adventure
- Wild ropes adventure course
- Animal Encounters

Operator: Taronga Zoo

Open: 9:30am – 5pm daily

	Adult	Child 4-15 yrs
Admission	\$51*	\$30*



WILD AUSTRALIA EXPERIENCE

This premium tour will be hosted by one of Taronga's amazing zookeepers and allow guests to come up close and personal to the Australian wildlife that call Nura Diya (this country) home. Explore the Australian animal precincts and enjoy exclusive behind the scenes experiences as well as a Koala Encounter.

Includes:

- Koala Encounter
- Behind the scenes experiences

Operator: Taronga Zoo

Departs: Daily from the Information Desk in the main entrance at Taronga Zoo at 10:15am, 1pm

Overnight Roar and Snore packages are available.

	Adult	Child 4-15 yrs
Guided Tour	\$180*	\$160*



BRIDGECLIMB SUMMIT

BridgeClimb is an iconic Australian experience that takes you on a journey to the top of the nation's most famous and celebrated structure – the Sydney Harbour Bridge. Climbs run from dawn to dusk, delivering unforgettable experiences on every ascent.

Includes:

- Certificate of Achievement
- BridgeClimb Cap
- Bridge and Sydney commentary
- 360-degree views

Not suitable for children under 8 yrs. Children 8-15 yrs must be accompanied by an adult climber. Other tours available. Price based on Mon-Fri climbs.

	Adult	Child 8-15 yrs
Summit Day Climb	\$354*	\$149*
Summit Night Climb	\$298*	\$149*
Summit Twilight Climb	\$394*	\$219*



LUNCH OR DINNER CRUISE

In a city which revolves around its spectacular waterways, there's no better way to experience Sydney than on the luxury cruiser, Spirit of Migloo. Seating just 80 people, the vessel features expansive sun, upper and main decks providing uninterrupted, 360 degree views of one of the world's most famous harbours.

See all the iconic sights including the Sydney Harbour Bridge, Opera House and Luna Park on the lunch cruise. Enjoy a lavish two course, à la carte menu featuring locally sourced and regionally inspired delights.

And while Sydney Harbour is photogenic at any time of day, there's nothing quite like the pink tinge to the sky as the sun slowly sets and the twinkling city lights come alive revealing the gleaming metropolis. See the harbour on a dinner cruise and enjoy a regionally focused three course menu highlighting the multicultural influences that make Sydney cuisine so special.

Whichever cruise you choose, wine lovers are in for a treat with wines hand selected by a sommelier from some of the finest wine regions in New South Wales.

Includes:

- 2.5 or 3 hour cruise on Sydney Harbour
- 360 degree views of iconic attractions
- 2 course lunch or 3 course dinner paired with a selection of beers, wines, soft drinks and tea or coffee

Operator: Journey Beyond Cruise Sydney

Duration: Lunch Cruise: 2 hours 30 minutes
Dinner Cruise: 3 hours

Departs: From King Street Wharf No. 8 at 12:10pm (Lunch Cruise). Tue to Sun (Oct – Jun), Tue, Thu, Sat (Jul – Sep) from King Street Wharf No. 8 at 6:25pm (Dinner Cruise)



	Adult	Child 4-17 yrs
Lunch Cruise	\$152*	\$89*
Dinner Cruise	\$205*	\$89*

SYDNEY TOURS



HARBOUR VIEW LUNCH

The Harbour View Lunch offers an exceptional restaurant experience, featuring à la carte dining and endless Sydney Harbour views. Choose from the two course lunch or indulge in a three course long lunch.

Includes:

- 2 or 3 course menu options
- Upper restaurant decks seating

Operator: Captain Cook Cruises

Duration: Harbour View Lunch: 1 hour 30 minutes
Harbour View Long Lunch: Up to 4 hours

Departs: Harbour View and Harbour View Long Lunch: Wed to Sun from Darling Harbour King Street Wharf No.1 at 12 noon and 1:30pm, Circular Quay Wharf No.6 at 12:30pm

	Adult	Child 4-15 yrs
Harbour View Lunch	\$99*	\$47*
With Window Seating	\$117*	\$65*
Harbour View Long Lunch	\$119*	\$52*
With Window Seating	\$137*	\$70*



GOLD PENFOLDS DINNER CRUISE

The quintessential gourmet food and wine experience on Sydney Harbour. Indulge in a six course degustation dinner with matched Penfolds wines, including the classic St Henri Shiraz.

Includes:

- 6 course degustation dinner with matched Penfolds wines and a selection of house spirits, liqueurs, beers and soft drinks
- Live music Sat-Sun (additional days to be announced)

Operator: Captain Cook Cruises

Duration: 2 to 3 hours

Departs: Wed, Thu & Sun from Darling Harbour King Street Wharf No.1 at 5pm and Circular Quay Wharf No.6 at 5:30pm, Fri and Sat from Darling Harbour King Street Wharf No.1 at 7pm

Not suitable for children under 18 yrs. Gold Dinner excluding drinks option also available.

	Adult
Dinner Cruise	\$279*
With Window Seating	\$297*



SUNSET DINNER

Experience the colour of spring and autumn sunsets, winter twilight or the endless days of summer on this Sydney Harbour sunset dinner cruise. Choose from the three course Sunset Dinner or the four course Premium Sunset Dinner. This cruise offers great opportunities to photograph the amazing Sydney Harbour sunset for much of the year.

Includes:

- Up to 2 hour cruise
- 3 or 4 course menu options

Operator: Captain Cook Cruises

Duration: Up to 2 hours

Departs: Wed to Sun from Darling Harbour King Street Wharf No.1 at 5pm and Circular Quay Wharf No.6 at 5:30pm

	Adult	Child 4-15 yrs
Sunset Dinner	\$115*	\$47*
With Window Seating	\$133*	\$65*
Premium Sunset Dinner	\$145*	\$57*
With Window Seating	\$163*	\$75*



SYDNEY HARBOUR DISCOVERY

Discover the secrets and history of Sydney Harbour and experience the vastness with its many secluded beaches and spectacular sandstone cliffs.

Includes:

- Harbour cruise
- Live commentary
- Tea and coffee station
- Full buffet lunch (lunch cruise only)

Operator: Sydney Princess Cruises

Duration: Morning and Afternoon: 90 minutes
Lunch: 2 hours 15 minutes

Departs: Daily from Eastern Pontoon, Circular Quay
Morning: 10:15am, Lunch: 12 noon, Afternoon: 2:30pm

	Adult	Child 5-14 yrs
Morning Cruise/ Afternoon Cruise	\$55*	\$35*
Lunch Cruise	\$75*	\$55*



STARLIGHT DINNER CRUISE

This premium dining experience embodies everything that makes Sydney special – quality Australian food, live entertainment and a premium, yet relaxed setting. Set against the spectacular backdrop of Sydney's skyline by night, this restaurant style dinner cruise is perfect for a romantic date night or a family celebration.

Includes:

- 4 course à la carte dining
- Live music Sat-Sun (additional days to be announced)

Operator: Captain Cook Cruises

Duration: 2 to 3 hours

Departs: Wed, Thu & Sun from Darling Harbour King Street Wharf No.1 at 5pm and Circular Quay Wharf No.6 at 5:30pm, Fri and Sat from Darling Harbour King Street Wharf No.1 at 7pm and Circular Quay Wharf No.6 at 7:30pm

	Adult	Child 4-15 yrs
Dinner Cruise	\$145*	\$57*
With Window Seating	\$163*	\$75*



THE STORY OF SYDNEY

The perfect orientation tour taking you on an intimate journey through Sydney from 1788 to today. Just like a story, the tour begins where it all started, The Rocks. Discover how the area has evolved from a penal colony to housing two of the world's most prominent icons. Travel past popular landmarks and through vibrant neighbourhoods en route to Watsons Bay and Bondi Beach. Discover the lively street culture, entertainment and shopping in Paddington and Darlinghurst, to the new and dazzling Barangaroo.

Includes:

- Expert guide and commentary
- Transport by premium mini coach
- Pick up from city accommodation

Operator: Ultimately Sydney

Duration: 4 hours

Departs: Daily from The Rocks at 8:30am

Other tour options are available.

	Adult	Child 2-12 yrs
Half Day Tour	\$159*	\$129*



LOCATION TOURS TO HOME AND AWAY

Visit Palm Beach to see the set of the TV show Home and Away. On the Filming Very Likely tour, see the drama of Summer Bay unfold as you watch scenes being made or spend time with one of the actors on the Meet an Actor tour.

- Includes:**
- Tour around famous locations • Chance to meet the cast and see filming (Filming Very Likely Tour)
 - Meet and greet with an actor (Meet an Actor Tour)
 - Experienced guide and expert commentary

Operator: Celebtime
Duration: 5 hours
Departs: From 107 Harrington St, The Rocks
 Filming Very Likely Tour: Tue at 10:30am
 Meet an Actor Tour: Sun at 10:30am
Concludes: Manly

	Adult	Child 5-13 yrs
Filming Very Likely Tour	\$135*	\$68*
Meet an Actor Tour	\$135*	\$68*



BONDI SURF LESSON

Hit the waves with a beginner surfing lesson on Bondi Beach. Qualified instructors will teach you how to get out onto your first wave. Start out on the beach practicing your techniques, learn how to recognise surf conditions, then it's off into the ocean to test your skills.

- Includes:**
- 2 hour surf lesson • Wetsuit, rash vest and sun block
 - Qualified instructor • Soft, safe surfboard
 - Small group of 5 students to 1 instructor
 - Change room and personal belongings storage

Operator: Lets Go Surfing Bondi
Duration: 2 hours
Departs: Daily from 128 Ramsgate Ave, Bondi Beach, regular daily departure times

Not suitable for children under 12 yrs. Other tours available.

	Adult	Child 12-16 yrs
Surf Lesson	\$99*	\$89*



PORT STEPHENS DOLPHIN WATCHING & 4WD COMBO

Port Stephens boasts 26 stunning golden beaches, national parks, diverse marine life, and is a great little escape from Sydney. Join a cruise boat and search for local Bottlenose dolphins in their natural environment. Jump on board a guided 4WD tour and try sandboarding down the biggest sand dunes.

- Includes:**
- 4WD/sandboard the impressive Stockton Sand Dunes
 - Dolphin watching cruise (1 hour 30 minutes)
 - Return transfers from Sydney to Port Stephens by air-conditioned vehicle

Operator: Colourful Collective Travel
Duration: 12 hours
Departs: Sat from three selected city departure points from 7:15am

Not suitable for children under 8 yrs.

	Adult/Child 8+ yrs
Full Day Tour	\$189*



BLUE MOUNTAINS DAY TOUR

Explore the World Heritage listed Blue Mountains. Stretching over one million hectares, it's a mix of rainforest, pristine bushland and dramatic cliffs. Enjoy immersive guided bushwalks, see the Three Sisters rock formation at Echo Point and visit Featherdale Wildlife Park.

- Includes:**
- Admission to Featherdale Wildlife Park
 - Two guided bushwalks
 - Gourmet picnic lunch
 - Travel by air-conditioned coach

Operator: Colourful Collective Travel
Duration: 10 hours
Departs: Tue to Sun from three selected city departure points from 7:15am

Not suitable for children under 8 yrs.

	Adult/Child 8+ yrs
Full Day Tour	\$199*



BOUTIQUE WINE & CHEESE TASTING TOUR

Located just two hours north of Sydney, the Hunter combines world renowned wines, gourmet produce and stunning countryside. The focus is on boutique wineries where the passion of the wine makers is obvious. The flexible itinerary provides access to a range of excellent wineries and the opportunity to meet the wine makers.

- Includes:**
- Fully escorted wine tour with expert guides
 - Tastings at 3-4 boutique wineries
 - Formal cheese tasting
 - Light café lunch with a glass of wine
 - Return transfers from city accommodation

Operator: Boutique Tours Australia
Duration: 10 hours
Departs: Mon to Sat from Sydney at 7am

Not suitable for children under 18 yrs.

	Adult
Full Day Tour	\$219*



HUNTER VALLEY SIGNATURE WINE TOUR

Explore the Hunter Valley wine region, tasting some of Australia's best wine, food, cheese, chocolate, beer and distilled spirits. Visit hidden gems and gain local knowledge about the wineries on this group tour.

- Includes:**
- Visit 3 award winning and boutique wineries
 - An exclusive 'behind the scenes' wine production tour
 - Lunch with a glass of wine, beer or soft drink
 - Local gourmet cheese and wine pairing
 - Delicious chocolate, wine pairing, organic vodka, schnapps, liqueur and gin tasting

Operator: Colourful Collective Travel
Duration: 12 hours
Departs: Tue to Sun from three selected city departure points from 7:15am

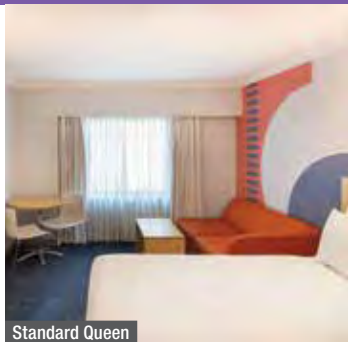
Not suitable for children under 18 yrs.

	Adult
Full Day Tour	\$249*

* PRICES ARE A GUIDE ONLY, subject to change and availability and are in Australian Dollars. Prices are per person, unless otherwise specified and based on travel in low season. For full terms and conditions, refer to the Booking Conditions on the inside back cover of this brochure.

SYDNEY ACCOMMODATION

IBIS STYLES SYDNEY CENTRAL



Standard Queen

27 Wentworth Avenue, Sydney
MAP PAGE 15

From **\$296**^{**}

- ❖ Bright rooms with cooking facilities
- ❖ Walking distance to beautiful Hyde Park
- ❖ Buffet breakfast available at on-site restaurant

Includes full breakfast daily.

Location: On the edge of the CBD, conveniently located near Chinatown, Darling Harbour and Sydney Tower. Distances: Pitt Street Mall 1.1km, Darling Harbour 1.2km, Circular Quay 2km, Airport 9.7km.

Property Features: Restaurant (breakfast), Gym, Guest laundry, Dry cleaning service, 24 hour reception, Non smoking, Parking (extra charge), 413 rooms.

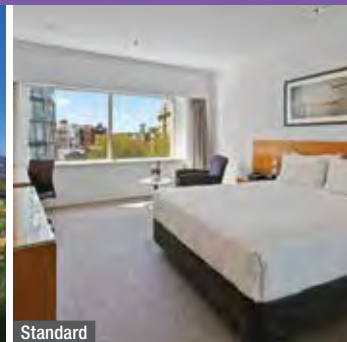
Room Features: Air-conditioning, Limited cooking facilities with microwave, Tea/coffee making facilities, Docking station, Hair dryer.

Max Capacity: Standard Queen/Standard Twin – 3.

[^]Price applies Sun-Thu nights.



HOLIDAY INN POTTS POINT SYDNEY



Standard

203 Victoria Street, Potts Point
MAP PAGE 15

From **\$244**^{*}

- ❖ Walk to Potts Point Dining Precinct or Royal Botanic Gardens
- ❖ Choose a city or harbour view room
- ❖ Kids 12 and under stay and eat for free with an accompanying adult

Location: Located in Potts Point village, a quieter enclave on the rim of Sydney's busy heart. Potts Point is a mix of elegant Art Deco architecture, late Victorian terraces and heritage mansions. Distances: Beach 3km, Sydney CBD 1.5km.

Property Features: Restaurant, Gym, Laundry facilities, 24 hour reception, Non smoking, Parking (extra charge), 288 rooms.

Room Features: Air-conditioning, Tea/coffee making facilities, Ironing facilities.

Max Capacity: Standard – 3, Harbour View – 2, Premium City View – 4.



HOLIDAY INN DARLING HARBOUR



Standard

68 Harbour Street, Darling Harbour
MAP PAGE 15

From **\$287**^{**}

- ❖ Sustainable and eco-friendly hotel
- ❖ Contemporary rooms with modern amenities
- ❖ Casual restaurant

Location: In the vibrant downtown Sydney, next-door to Chinatown, Darling Square and Darling Harbour's crowd-pleaser. Distances: Cockle Bay Wharf 1km, Pitt Street Mall 1.3km, Circular Quay 2.6km, Airport 7.5km.

Property Features: Restaurant, 24 hour room service, 24 hour gym, 24 hour reception, Non smoking, Parking (off-site security – extra charge), 370 rooms.

Room Features: Air-conditioning, Tea/coffee making facilities, 49" LCD TV, Ironing facilities, Bathrobes & slippers, Hair dryer, Safe.

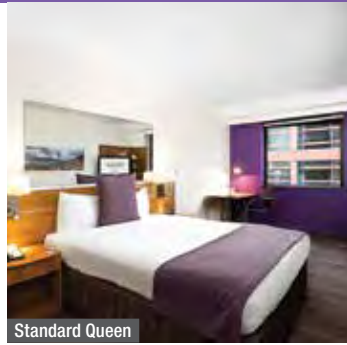
Max Capacity: Standard – 4, Premium King – 3, Premium Family – 2 adults/2 children.

[^]Price applies Sun-Thu nights.



*** FROM PRICES ARE A GUIDE ONLY**, subject to change and availability and are in Australian Dollars. Prices are per room per night for 2 people, unless otherwise specified and based on the lowest room category for travel in low season. For full terms and conditions, refer to the Booking Conditions on the inside back cover of this brochure.

MERCURE SYDNEY



Standard Queen

818-820 George Street, Sydney
MAP PAGE 15

From **\$219***

- ❖ New York style cocktail bar
- ❖ Rooftop heated pool with spectacular city views
- ❖ Directly opposite Central Station and an eight minute walk to Darling Harbour

Location: Within walking distance of many of Sydney's ultimate sightseeing and city attractions including Darling Harbour, Pitt Street Mall and Chinatown. Distances: Pitt Street Mall 1.8km, Darling Harbour 1.2km, Circular Quay 3km, Airport 8.8km.

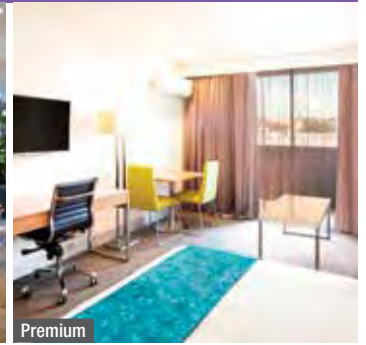
Property Features: Wi-Fi (common areas – extra charge), Pool (heated indoor), Restaurant, Bar, 24 hour room service, Gym, Sauna, Laundry/dry cleaning service, Parking (extra charge), 517 rooms.

Room Features: Wi-Fi (extra charge), Air-conditioning, Tea/coffee making facilities, Pillow menu, In-room movies (pay to view), Cable TV, Safe.

Max Capacity: Standard Queen – 2, Standard Two Double – 3 adults or 2 adults/ 2 children.



METRO ASPIRE HOTEL SYDNEY



Premium

383-389 Bulwara Road, Ultimo
MAP PAGE 15

From **\$254***

- ❖ Spacious rooms with large private balconies
- ❖ Contemporary Australian restaurant
- ❖ Easy access to Sydney's shopping and entertainment hub

Location: On a quiet street close to the Darling Harbour tourism precinct and within walking distance to the Powerhouse Museum, Paddy's Market, Chinatown and International Convention Centre. Distances: Pitt Street Mall 1.9km, Darling Harbour 900m, Circular Quay 3.2km, Airport 7.3km.

Property Features: Restaurant, Lift, 24 hour reception, Non smoking, Parking (extra charge), 96 rooms.

Room Features: Air-conditioning, Balcony, Tea/coffee making facilities, Smart TV, Ironing facilities.

Max Capacity: Premium – 3.



VIBE HOTEL SYDNEY



Guest

111 Goulburn Street, Sydney
MAP PAGE 15

From **\$300***

- ❖ Sunny rooftop pool and deck
- ❖ Popular café and bar, perfect for breakfast and afternoon drinks
- ❖ Close to Hyde Park and Chinatown

Location: Close to the many attractions Sydney has to offer including Darling Harbour and shopping districts. Distances: Pitt Street Mall 1.1km, Darling Harbour 1.1km, Circular Quay 2km, Airport 6.8km.

Property Features: Pool, Restaurant, Café, Bar, 24 hour room service, Sauna, Gym, Laundry/dry cleaning service, 24 hour reception, Non smoking, 198 rooms.

Room Features: Air-conditioning, Mini bar, Tea/coffee making facilities, In-room movies (pay to view), Docking station, Ironing facilities, Hair dryer, Safe.

Max Capacity: Guest – 2, Family – 4.



SYDNEY ACCOMMODATION

CROWNE PLAZA SYDNEY DARLING HARBOUR



Standard King

58 Bathurst Street, Sydney
MAP PAGE 15

From **\$344***

- ◆ Rooms offer contemporary furnishings with art déco accents
- ◆ Enviable location only a five minute walk to Darling Harbour
- ◆ Rooftop heated pool and sundeck

Location: On the corner of Bathurst and Sussex Streets, within a five minute walk to Town Hall, QVB and Chinatown. Distances: Cockle Bay Wharf 500m, Pitt Street Mall 750m, Circular Quay 2km, Airport 8km.

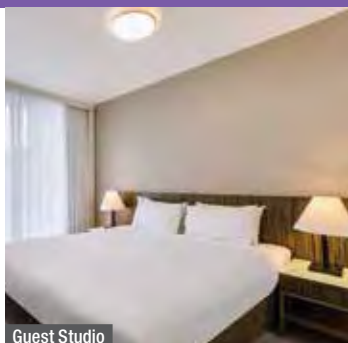
Property Features: Pool (heated rooftop), Rooftop terrace, Sundeck, Restaurants (2), Café, Bar, 24 hour room service, Gym, Guest laundry, Lift, 24 hour reception, Non smoking, Parking (extra charge), 152 rooms.

Room Features: Air-conditioning, Tea/coffee making facilities, Coffee pod machine, Mini bar, Smart TV, Bluetooth speakers, Ironing facilities, Hair dryer, Bathrobes, Safe.

Max Capacity: Standard King/Premium King/Junior King Suite – 3, Premium 2 Queen – 4.



ADINA APARTMENT HOTEL SYDNEY, DARLING HARBOUR



Guest Studio

55 Shelley Street, Sydney
MAP PAGE 15

From **\$350***

- ◆ Located in the harbour dining precinct and close to theatres
- ◆ Heated semi-outdoor swimming pool
- ◆ Apartments with interconnecting rooms are great for families

Location: Located at King Street Wharf, a short walk to Sydney's major tourist attractions, entertainment venues and shopping precincts. Distances: Cockle Bay Wharf 550m, Pitt Street Mall 800m, Circular Quay 1.7km, Airport 9.1km.

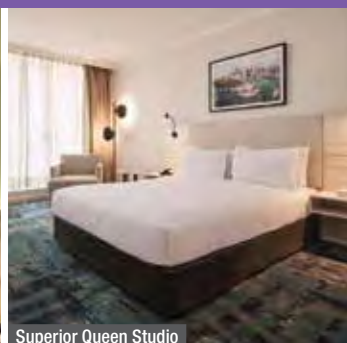
Property Features: Pool, Restaurant (breakfast and lunch only), Room service, Barbecue area, Gym, Sauna, 24 hour reception, Non smoking, Parking (extra charge), 114 rooms.

Room Features: Air-conditioning, Kitchen (Apartment), Limited cooking facilities (Studio), Docking station, Ironing facilities, Laundry (Apartment), Hair dryer, Safe.

Max Capacity: Guest Studio – 2, Guest 1 Bedroom/Premier 1 Bedroom – 3.



RYDGES DARLING SQUARE APARTMENT HOTEL



Superior Queen Studio

72 Liverpool Street, Sydney
MAP PAGE 15

From **\$279***

- ◆ A short walk from Sydney's harbourside playground, Darling Harbour
- ◆ Spacious, self-contained accommodation
- ◆ The hotel offers sweeping city views and sun-filled spaces

Location: Nestled in the centre of the CBD. Barangaroo, Darling Harbour, Sydney Opera House, Hyde Park and Cockle Bay Wharf are all just a short walk away. Distances: Pitt Street Mall 1km, Darling Harbour 150m, Circular Quay 2.2km, Airport 7.5km.

Property Features: Pool, Restaurant, 24 hour reception, Gym, Spa, Sauna, Lift, 98 rooms.

Room Features: Air-conditioning, Flat screen TV, Limited cooking facilities, Tea/coffee making facilities, Ironing facilities, Safe.

Max Capacity: Superior Queen Studio/Superior King Studio/Superior One Bedroom Apartment – 2.



* FROM PRICES ARE A GUIDE ONLY, subject to change and availability and are in Australian Dollars. Prices are per room per night for 2 people, unless otherwise specified and based on the lowest room category for travel in low season. For full terms and conditions, refer to the Booking Conditions on the inside back cover of this brochure.

RYDGES WORLD SQUARE SYDNEY



Deluxe Split King

389 Pitt Street, Sydney
MAP PAGE 15

From **\$299***

- ❖ Located in the heart of Sydney CBD
- ❖ Live music available on Saturday at the Sydney Cidery
- ❖ Some rooms have a private balcony overlooking the city

Location: In the World Square shopping and business precinct, perfect for sightseeing, shopping or a relaxed stay. Distances: Pitt Street Mall 750m, Darling Harbour 850m, Circular Quay 2km, Airport 7.6km.

Property Features: Restaurant, Bar, Gym, 24 hour reception, Valet parking (extra charge), 460 rooms.

Room Features: Air-conditioning, Mini bar, Tea/coffee making facilities, In-room movies (pay to view), Cable TV, Ironing facilities, Hair dryer, Safe, All rooms non smoking.

Max Capacity: Deluxe Split King/Executive King – 3, Deluxe Twin/Executive King Suite – 4, Family – 5.



CROWN TOWERS SYDNEY



Deluxe King

1 Barangaroo Ave, Barangaroo
MAP PAGE 15

From **\$843*[^]**

- ❖ Mesmerising Sydney Harbour views from the luxurious outdoor infinity pool
 - ❖ World-class dining at iconic restaurants, including Nobu and Oncore
 - ❖ Crown Spa Sydney offers a complete wellness journey
- Includes full breakfast daily.**

Location: Located in Barangaroo only a short walk from both The Rocks and Martin Place Station and Circular Quay Ferries. Distances: Darling Harbour 1.7km, Airport 9km.

Property Features: Pool, Spa, Restaurants (3), Bar, 24 hour room service, Gym, 349 rooms.

Room Features: Air-conditioning, Mini bar, Cable TV, Tea/coffee making facilities, In-room movies (pay to view), Docking station, Ironing facilities, Bathrobes, Hair dryer, Safe.

Max Capacity: Deluxe King/Studio Room/Harbour Bridge Studio/Opera Studio/Premier Suite/Executive Suite/Executive Harbour Bridge Suite/Premier Harbour Bridge Suite – 2, Harbour Bridge/Opera/Tower Suite/Opera Tower Suite – 4.

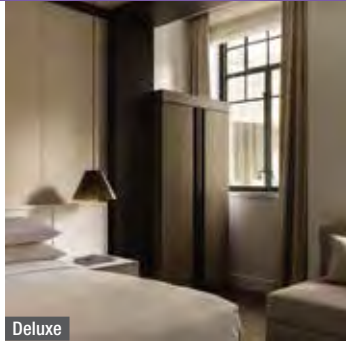
[^]Price applies Sun-Thu nights.



*FROM PRICES ARE A GUIDE ONLY, subject to change and availability and are in Australian Dollars. Prices are per room per night for 2 people, unless otherwise specified and based on the lowest room category for travel in low season. For full terms and conditions, refer to the Booking Conditions on the inside back cover of this brochure.

SYDNEY ACCOMMODATION

CAPELLA SYDNEY



Deluxe

35-39 Bridge Street, Sydney
MAP PAGE 15

From **\$800***

- ❖ Hidden luxury in the historic Sandstone Precinct in the heart of the city
 - ❖ Light-filled, spacious guest rooms and suites exude luxury
 - ❖ World-class wellness centre nestled among decades of architectural history
- Includes full breakfast daily.**

Location: Within footsteps of the glistening harbour foreshore, the famed Sydney Opera House and Harbour Bridge. Distances: Pitt Street Mall 1.4km, Darling Harbour 2.1km, Circular Quay 450m, Airport 12km.

Property Features: Pool, Restaurants (2), Bar, 24 hour room service, Day spa, Fitness centre, 24 hour reception, Valet parking (extra charge), 192 rooms.

Room Features: Air-conditioning, Mini bar, Tea/coffee making facilities, Ironing facilities, Bathrobes, Hair dryer, Safe.

Max Capacity: Deluxe – 2, Premier/Skyline Room/Skyline Suite/Deluxe Suite – 3.



FOUR SEASONS HOTEL SYDNEY



Deluxe City King Room

199 George Street, Sydney
MAP PAGE 15

From **\$467***

- ❖ Five-star views from the harbour's edge
- ❖ Newly remodelled guestrooms are ideally suited to the modern traveller
- ❖ Relax, dine and enjoy the Club Lounge 32 while overlooking the city and harbour

Location: On the harbourfront at Circular Quay. Distances: Pitt Street Mall 1.2km, Darling Harbour 2km, Circular Quay 650m, Airport 10.2km.

Property Features: Pool (heated outdoor), Spa, Restaurant, Bars (2), 24 hour room service, Endota Spa (day spa), Fitness centre, Laundry, 24 hour reception, Parking (extra charge), 531 rooms.

Room Features: Air-conditioning, Mini bar, Morning newspaper, Bathrobes, Safe.

Max Capacity: Deluxe City King Room/Deluxe Partial Harbour/Deluxe Full Harbour – 2, Four Seasons Full Harbour Club Suite/One Bedroom City Club Suite/One Bedroom City Royal Suite/One Bedroom Full Harbour Club Suite/One Bedroom Opera Club Suite/One Bedroom Opera Royal Suite/One Bedroom Presidential Suite/Premier City/Premier Full Harbour Club/Premier Partial Harbour – 3 adults or 2 adults/2 children.



INTERCONTINENTAL SYDNEY



Classic

117 Macquarie Street, Sydney
MAP PAGE 15

From **\$437***

- ❖ Beautifully restored Treasury Building of 1851
- ❖ Sophisticated rooms and suites offer spacious interiors and unforgettable views
- ❖ Heated indoor swimming pool overlooking Sydney Harbour

Location: On the edge of one of the world's most stunning harbours and just a short stroll to the Opera House and ferries. Distances: Pitt Street Mall 1km, Darling Harbour 2.2km, Circular Quay 220m, Airport 9.5km.

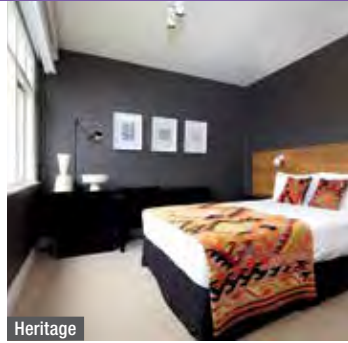
Property Features: Pool (heated indoor), Restaurants (2), Bar, 24 hour room service, Gym, Sauna, 24 hour reception, Valet parking (extra charge), 509 rooms.

Room Features: Air-conditioning, Mini bar, Bathrobes, Hair dryer.

Max Capacity: Classic/Eastern Harbour View/Harbour Bridge View/Opera House View – 3 adults or 2 adults/2 children.



HARBOUR ROCKS HOTEL SYDNEY



Heritage

34-52 Harrington Street, The Rocks
MAP PAGE 15

From **\$379***[^]

- ❖ Boutique Heritage Listed hotel with lobby library
- ❖ Garden terrace is a relaxing oasis looking out to the historical Nurses Walk
- ❖ Middle Eastern restaurant, two bars and a French creperie café

Location: In the heart of The Rocks within walking distance to Circular Quay and the Opera House. Distances: Pitt Street Mall 1.3km, Darling Harbour 2.2km, Circular Quay 600m, Airport 9.3km.

Property Features: Restaurant, Bar, Café, Gym, 24 hour room service, Garden terrace, Library, Laundry/dry cleaning service, 24 hour reception, Non smoking, Parking (extra charge), 59 rooms.

Room Features: Air-conditioning, Tea/coffee making facilities, Mini bar, In-room movies (pay to view), Docking station, Ironing facilities, Bathrobes and slippers, Hair dryer, Safe.

Max Capacity: Heritage/Superior Heritage – 2, Studio Suite – 3 adults or 2 adults/ 2 children.

[^]Price applies Sun-Thu nights.



OVOLO WOOLLOOMOOLOO



Superoo

6 Cowper Wharf Road, Woolloomooloo
MAP PAGE 15

From **\$483***

- ❖ Indoor pool with outdoor pool cabanas
- ❖ Bridging between heritage and modern luxury, contemporary designs and tech-savvy inclusions

Location: Close to the heart of Sydney CBD, in a peaceful wharf location near Sydney Royal Botanic Gardens, you will be in the perfect location to explore beautiful parklands and the Sydney Opera House as well as The Rocks. Distances: Pitt Street Mall 1.4km, Darling Harbour 2.5km, Circular Quay 1.5km, Airport 11km.

Property Features: Pool (indoor), Restaurant, Bar, Candy station (free), Gym, Sundeck, 24 hour reception, Non smoking, Valet parking (extra charge), 100 rooms.

Room Features: Air-conditioning, Tea/coffee making facilities, Smart TV with Chromecast, Amazon Alexa, Electric blinds, Ironing facilities, Safe.

Max Capacity: Superoo/Ultraoo – 2, Cityvoo King/Cityvoo Double Double/Cityvoo Loft/Deluxaroo King/Deluxaroo Double Double/Deluxaroo Loft – 3.



SHANGRI-LA HOTEL, SYDNEY



Deluxe Darling Harbour Room

176 Cumberland Street, The Rocks
MAP PAGE 15

From **\$434***

- ❖ Positioned in the dress circle of the historic Rocks district
- ❖ Award-winning dining experiences
- ❖ Luxury Chi, the Spa, is an urban oasis in the heart of the city

Location: In the historic Rocks district overlooking Sydney Harbour. Distances: Pitt Street Mall 1.3km, Darling Harbour 2.1km, Circular Quay 900m, Airport 9.2km.

Property Features: Pool (heated indoor), Spa, Restaurant, Bar, Room service, Day spa, Fitness centre, Sauna, 24 hour reception, Valet parking (extra charge), 564 rooms.

Room Features: Air-conditioning, Mini bar, Cable TV, Tea/coffee making facilities, In-room movies (pay to view), Bathrobes, Safe.

Max Capacity: Deluxe Darling Harbour/Deluxe Opera House City/Executive Darling Harbour/Executive Opera House City/Executive Sydney Harbour/Horizon Opera House City/Horizon Darling Harbour/Horizon Sydney Harbour/Harbour Bridge Suite/Executive Sydney Harbour Suite – 3 adults or 2 adults/2 children, Premier Sydney Harbour Bridge/Horizon Premier Sydney Harbour – 2, Deluxe Harbour Bridge – 3.



THE WOOLSTORE 1888 BY OVOLO



King

139 Murray Street, Pyrmont
MAP PAGE 15

From **\$450***

- ❖ Heritage Listed converted wool store dating back to 1888
- ❖ Complimentary daily social happy hour
- ❖ Modern industrial rooms with walk-in rain shower

Location: In booming Pyrmont, surrounded by trendy bars, exciting dining and boutique shopping. Distances: Cockle Bay Wharf 700m, Pitt Street Mall 1.4km, Circular Quay 2.7km, Airport 7.7km.

Property Features: Restaurant, Bar, Candy Station (free), Guest laundry (free), 24 hour reception, Non smoking, Parking (extra charge), 90 rooms.

Room Features: Air-conditioning, Tea/coffee making facilities, Smart TV, Amazon Alexa, Ironing facilities, Safe.



Max Capacity: King/King Deluxe – 2, Junior Suite – 3.



SYDNEY BEACHES & TARONGA ZOO ACCOMMODATION

ADINA APARTMENT HOTEL COOGEE

◆◆◆◆

183 Coogee Bay Road, Coogee
MAP PAGE 15

From **\$271***

- ◆ Short walk to Coogee Beach, Wylie's Baths and relaxed beachside dining
- ◆ Beautiful indoor heated pool and sauna
- ◆ Stylish apartments with full kitchen and laundry facilities

Location: In one of Sydney's most beautiful beachside suburbs, just a short stroll to the beach and close to Royal Randwick Racecourse. Distances: Coogee Beach 350m, Wylie's Baths 1km, Shop 100m, Airport 10.8km.

Property Features: Pool (heated indoor), Sauna, Gym, Dry cleaning service, 24 hour reception, Parking (extra charge), 86 rooms.



Room Features: Air-conditioning, Mini bar, Kitchen (except Studio), Microwave, In-room movies (pay to view), Laundry (except Studio), Ironing facilities, Hair dryer.

Max Capacity: Studio – 2, 1 Bedroom – 3.



ADINA APARTMENT HOTEL BONDI BEACH

◆◆◆◆

69-73 Hall Street, Bondi Beach
MAP PAGE 15

From **\$357***

- ◆ Modern hotel with sunny courtyard and undercover pool
- ◆ Short walk to the beach, local markets and Bondi Icebergs
- ◆ Spacious apartments with balconies, full kitchen and laundry

Location: Set among trendy restaurants, cafés and bars and ideally located on the hip-strip of Bondi. Distances: Bondi Beach 650m, Sydney CBD 8km, Airport 15km.

Property Features: Pool, Spa, Gym, 24 hour reception, Non smoking, Parking (extra charge), 111 rooms.

Room Features: Air-conditioning, Balcony, Kitchen with microwave and dishwasher (1 Bedroom), Limited cooking facilities with microwave (Studio), Mini bar, Cable TV, Docking station, Washer/dryer (1 Bedroom), Ironing facilities, Hair dryer, Safe.

Max Capacity: Studio Guest – 2, 1 Bedroom Guest – 3.



WILDLIFE RETREAT AT TARONGA

◆◆◆◆



Bradleys Head Road, Mosman
MAP PAGE 15

From **\$595***

- ◆ Elegant eco-retreat nestled within Taronga Zoo
- ◆ Rooms overlook the zoo's bushland, animals or Sydney Harbour
- ◆ A short ferry ride from Circular Quay

Includes full breakfast daily, admission to Taronga Zoo and exclusive tours.

Location: Set within an exclusive native animal sanctuary at Taronga Zoo and overlooking the iconic Sydney Harbour. Distances: Beach 2.2km, Sydney CBD 9.8km, Airport 20.7km.

Property Features: Bar, Restaurant, Guest lounge, Non smoking, Parking (free), 62 rooms.

Room Features: Air-conditioning, Mini bar, Tea/coffee making facilities, Hair dryer, Safe.

Max Capacity: Bushland View/Animal View/Harbour View/Treetop Suite – 2 adults/1 child, Ultimate Treetop Suite – 3.

Packages including dinner are also available.



* FROM PRICES ARE A GUIDE ONLY, subject to change and availability and are in Australian Dollars. Prices are per room per night for 2 people, unless otherwise specified and based on the lowest room category for travel in low season. For full terms and conditions, refer to the Booking Conditions on the inside back cover of this brochure.



Shoal Bay, Port Stephens

Destination NSW

COASTAL NEW SOUTH WALES

The state's beautiful coastline has sparkling beaches, delightful lakes, lush World Heritage Listed rainforests and relaxed beach towns all waiting to be explored. These coastal centres offer so much to do – fishing, boating, surfing, kayaking, stand-up paddle boarding, hiking and dining on fresh seafood and produce.

SEE

- Try your luck at spotting whales migrating off the coast

DO

- Swim in one of the many picture-perfect ocean baths dotted along the coast
- Ride some of the east coast's best surf breaks at the Pass, Byron Bay

EAT & DRINK

- Savour modern Australian cuisine, delicious wines, and beach views at The Stunned Mullet in Port Macquarie

WHAT'S ON

Byron Bay Bluesfest

28 March to 1 April

REF.	APARTMENTS	PAGE
1	Adina Apartment Hotel Wollongong	32
2	Bangalay Luxury Villas, Shoalhaven Heads	32
3	Oaks Nelson Bay Lure Suites	29
4	Oaks Port Stephens Pacific Blue Resort	30
5	Oaks The Entrance Waterfront Suites	31

REF.	HOTELS	PAGE
4	Anchorage Port Stephens	30
6	Beachcomber Hotel & Resort, Toukley	31
7	Bells at Killcare Boutique Hotel & Spa	32
8	Crystalbrook Byron	28
8	Discovery Parks - Byron Bay	28
8	Eco Beach Resort Byron Bay	28
9	Lincoln Downs Resort Batemans Bay	32
4	Port Stephens Koala Sanctuary	30
10	Rydges Newcastle	31
11	Rydges Port Macquarie	29
12	Sanctuary Resort Coffs Harbour	29
8	The Lord Byron	28



BYRON SURF EXPERIENCE

Can you imagine yourself riding a wave at beautiful Byron Bay? This popular two hour beginner surf lesson will get you safely up and onto your first wave before you've even had time to worry about falling off. Get an authentic taste of surfing and learn useful safety information about waves and the beach. You won't be able to wipe the smile off your face for hours!

Includes:

- 2 hour surf lesson • Qualified instructor
- Soft, safe surfboard • Small group lesson of 6 students to 1 instructor
- Wetsuit, rash vest and sun block
- Change room and personal belongings security

Operator: Lets Go Surfing Byron Bay

Duration: 2 hours

Departs: Daily from Byron Bay at 9am, 10am, 2pm

Not suitable for children under 12 yrs.

	Adult/Child 12+ yrs
Surf Lesson	\$75*



DOLPHIN KAYAK

Come on an adventure with the dolphins, kayaking the famous Byron Bay Marine Park. Enjoy paddling out through the surf and get up close and personal with the friendly Bottlenose dolphins. Spot sea turtles as they come up for air and marvel at the majestic Humpback whales as they migrate through Byron Bay from May to November. All tours finish with all you can eat Tim Tams.

Includes:

- Approx 2.5 hours kayaking tour
- All tuition and equipment supplied
- Experienced guides

Operator: Cape Byron Kayaks

Duration: Approx 2 hours 30 minutes

Departs: 2-3 times daily from Byron Bay

Not suitable for adult non swimmers or children under 5 yrs.

	Adult/Child 5+ yrs
Kayak Tour	\$89*



BYRON RAINFOREST & WATERFALL TOUR

Explore the natural wonder of the World Heritage listed Nightcap National Park. Enjoy a guided rainforest walk to the base of spectacular Minyon Falls. Take a swim in the pristine fresh water pools, photograph the abundant wildlife or simply get in touch with nature. After a delicious barbecue lunch, the tour weaves through the beautiful Byron hinterland and the many unspoiled hinterland towns sprinkled throughout the countryside.

Includes:

- Experienced guide • All transfers
- National Park fees • Barbecue style-lunch

Operator: Byron Bay Adventure Tours

Duration: 6 hours

Departs: Daily from Byron Bay Visitor Centre at 7:45am

Not suitable for children under 6 yrs.

	Adult/Child 6+ yrs
Full Day Tour	\$189*

*PRICES ARE A GUIDE ONLY, subject to change and availability and are in Australian Dollars. Prices are per person, unless otherwise specified and based on travel in low season. For full terms and conditions, refer to the Booking Conditions on the inside back cover of this brochure.

COASTAL NEW SOUTH WALES ACCOMMODATION

DISCOVERY PARKS – BYRON BAY



Deluxe Safari Tent

399 Ewingsdale Road, Byron Bay
MAP PAGE 27

From **\$184***

- ❖ Kids will love the Waterpark and Bouncing Pillow
- ❖ Set among tropical gardens and lakes adjacent to Belongil Creek
- ❖ A short walk to nearby beaches

Location: Surrounded by beaches and lush hinterland, within walking distance to the beach and cafés and just two kilometres from the centre of Byron Bay. Distances: Beach 2.7km, Town centre 2km.

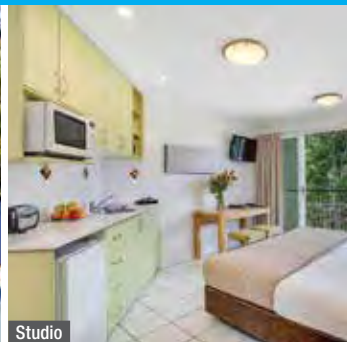
Property Features: Pools (2), Café, Waterpark, Bouncing pillow, Camp kitchen, Barbecue area, Tennis court, Bicycle hire, Guest laundry, Parking (free), 80 rooms.

Room Features: Air-conditioning, Balcony, Tea/coffee making facilities, Kitchen with microwave, Hair dryer.

Max Capacity: Deluxe Safari Tent/Superior 2 Bedroom Lakeside Cabin/Deluxe Lakeside 2 Bedroom Cabin – 4, Deluxe Studio Lakeside – 2, Superior 2 Bedroom Cabin/Deluxe 2 Bedroom Cabin – 6.



ECO BEACH RESORT BYRON BAY



Studio

35-37 Shirley Street, Byron Bay
MAP PAGE 27

From **\$288*^**

- ❖ A short walk to the beach and cafés
- ❖ All rooms have balconies or courtyards
- ❖ Spacious rooms are ideal for families

Location: Set on the edge of the town centre and close to shops and cafés. Distances: Beach 350m, Town centre 300m.

Property Features: Pool, Spa, Barbecue area, Parking (free), 45 rooms.

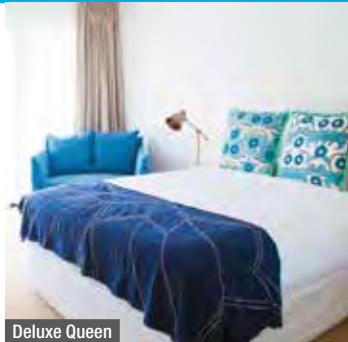
Room Features: Air-conditioning, Balcony or courtyard, Limited cooking facilities, Tea/coffee making facilities, Ironing facilities (1 and 2 Bedroom), Hair dryer.

Max Capacity: Studio – 2, 1 Bedroom – 3, 2 Bedroom – 5.

^Minimum 2 night stay applies.



THE LORD BYRON, BYRON BAY



Deluxe Queen

120 Jonson Street, Byron Bay
MAP PAGE 27

From **\$349***

- ❖ Spacious rooms have private balconies
- ❖ Large outdoor pool with poolside bar service
- ❖ Free bicycle and surf board hire

Location: In the heart of Byron Bay, within walking distance to the beach and cafés. Distances: Beach 950m, Town centre 450m.

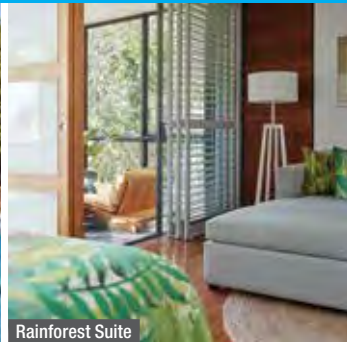
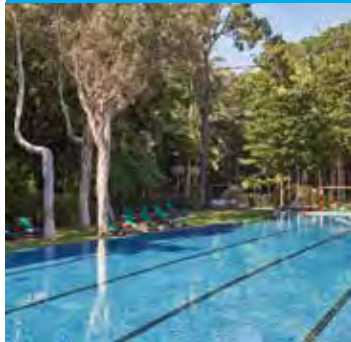
Property Features: Pool (heated outdoor), Spa, Bar, Sauna, Tennis court (floodlit), Guest Laundry, Parking (free), 31 rooms.

Room Features: Air-conditioning, Balcony, Tea/coffee making facilities, Microwave, Ironing facilities, Hair dryer, Safe.

Max Capacity: Deluxe Queen – 2, Deluxe Queen Single – 3, 2 Bedroom Apartment – 4.



CRYSTALBROOK BYRON



Rainforest Suite

20-22 Fletcher Street, Byron Bay
MAP PAGE 27

From **\$367*^**

- ❖ Short walk to beach and cafés
- ❖ Modern lap pool with sun loungers
- ❖ Large apartments ideal for families or groups

Location: In the heart of Byron Bay, only 150 metres to the beach and surrounded by cafés and boutiques. Distances: Beach 150m, Town centre 150m.

Property Features: Pool, Restaurants (2), Bar, Day spa, Gym, Tennis court, Courtesy bike rentals, Sauna, Courtesy transfers to Byron Bay (three times daily), Non smoking, Parking (free), 92 rooms.

Room Features: Air-conditioning, Enclosed verandahs (2), Separate living and dining areas, TVs (2), Kitchen with microwave, Washer/dryer, Yoga mat, Hair dryer, Safe.

Max Capacity: Rainforest Suite/Treetop Suite – 3 adults or 2 adults/2 children, Rainforest Luxe Suite/Treetop Luxe Suite – 3.



SANCTUARY RESORT COFFS HARBOUR



Executive King

250 Pacific Highway, North Boambee Valley, Coffs Harbour
MAP PAGE 27

From **\$267***

- ❖ Motel accommodation in a natural bushland setting
- ❖ Outdoor swimming pool with waterside
- ❖ Superior Family rooms feature a well-equipped kitchen

Location: Set back from the Pacific Highway, within driving distance of Coffs Harbour Airport and city centre. Distances: Beach 5.2km, Town centre 1.6km.

Property Features: Pool, Restaurant, Bar, Room service, Exercise equipment, Tennis (half court), Sauna, Barbecue area, Guest Laundry, Parking (free), 40 rooms.

Room Features: Air-conditioning, Balcony, Kitchen with microwave (Superior Family), Tea/coffee making facilities, Cable TV, Ironing facilities, Hair dryer.

Max Capacity: Executive King – 2, Superior Family – 4.



FREE

OAKS NELSON BAY LURE SUITES



20 Tomaree St, Nelson Bay
MAP PAGE 27

From **\$176*^**

- ❖ Spacious self-contained apartments are great for families
- ❖ Little kids will love the wading pool
- ❖ Outdoor barbecue facilities for al fresco dining

Location: Located in the charming town centre, just a short walk from the unspoilt waters of Port Stephens, the marina, restaurants and shops. Distances: Nelson Bay Marina 300m, Beach 50m, Town centre 100m.

Property Features: Pool, Guest laundry, Parking (free), 57 rooms.

Room Features: Air-conditioning, Balcony, Kitchen (1 and 2 Bedrooms), Tea/coffee making facilities.

Max Capacity: Hotel – 2, One Bedroom – 3, Two Bedroom – 5.

^Price applies Sun-Thu nights.



FREE

RYDGES PORT MACQUARIE



Standard King

1 Hay Street, Port Macquarie
MAP PAGE 27

From **\$250***

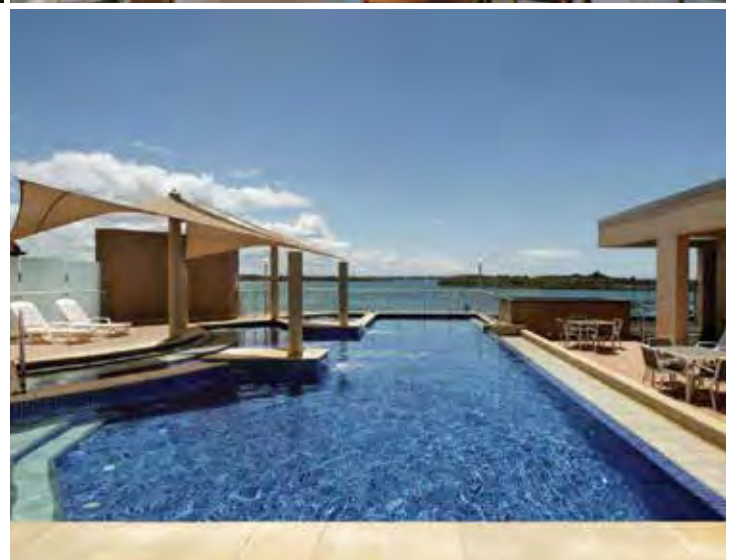
- ❖ Located right on the Hastings River in the heart of Port Macquarie
- ❖ Large pool area overlooks the water
- ❖ Waterfront dining at Zebu Bar & Restaurant

Location: In the town centre, an ideal location between Sydney and Brisbane. Distances: Beach 850m, Town centre 250m.

Property Features: Pool (heated outdoor), Spa, Restaurant, Café, Bar, Room service, Gym, Bicycle hire (free), Laundry/dry cleaning service, Lift, 24 hour reception, Parking (undercover – extra charge), 117 rooms.

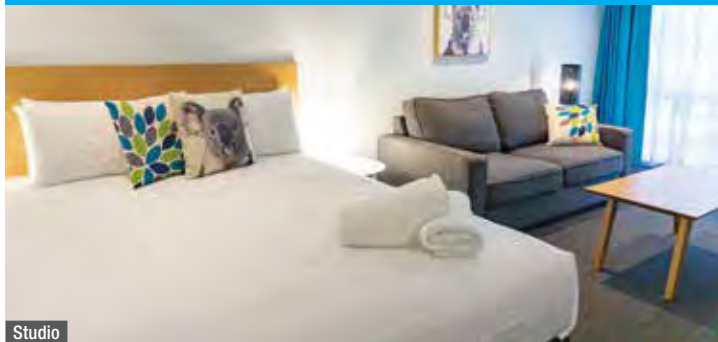
Room Features: Air-conditioning, Tea/coffee making facilities, Mini bar, In-room movies (pay to view), Ironing facilities, Hair dryer, Non smoking rooms, Safe.

Max Capacity: Standard King/Superior King/Deluxe King – 2, Standard Twin – 4.



COASTAL NEW SOUTH WALES ACCOMMODATION

PORT STEPHENS KOALA SANCTUARY



Studio

562 Gan Gan Road, One Mile
MAP PAGE 27

From **\$339***

- ❖ Wake up with the koalas in a spectacular natural bushland setting
- ❖ Family friendly accommodation options
- ❖ Support the long-term rehabilitation, preservation and conservation of koalas

Includes continental breakfast provisions daily, unlimited entry into the Koala Sanctuary, Guided Walk and Talk Tour and morning koala viewing.

Location: Set in 8 hectares of stunning bushland and nestled on the edge of the magnificent One Mile Beach. Distances: Beach 400m, Town centre 8 km.

Property Features: Pool, Spa, BBQ facilities, Café, Gift Shop, Guest laundry, Car parking (free), 40 rooms.

Room Features: Air-conditioning, TV, Lounge area, Terrace/balcony with outdoor furniture, Limited cooking facilities, Ironing facilities, Hair dryer.

Max Capacity: Studio/Deluxe Glamping – 2, Studio Plus/1 Bedroom Suite – 3, 1 Bedroom Suite Plus/Superior Glamping – 4.



Superior Glamping



ANCHORAGE PORT STEPHENS



Anchorage

Corlette Point Road, Port Stephens
MAP PAGE 27

From **\$399***

- ❖ Unmatched waterfront position on the cusp of a boutique marina
- ❖ Two restaurants offer waterfront dining
- ❖ Hamptons-style rooms with private balconies and marina views

Includes full breakfast daily.

Location: Waterfront location overlooking one of the beautiful shores of Port Stephens. Distances: Beach 20m, Shop 3km.

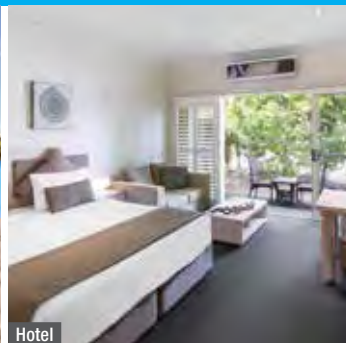
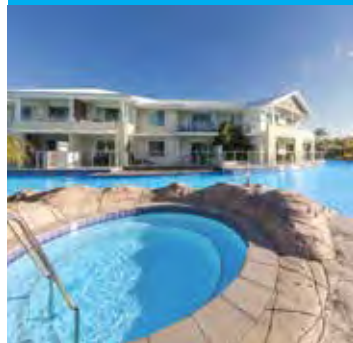
Property Features: Pools (2 – 1 adults only pool), Spa, Restaurants (2), Bar, Room service, Day spa, Sauna, Parking (free), 81 rooms.

Room Features: Air-conditioning, Balcony, Tea/coffee making facilities, Mini bar, Cable TV, Ironing facilities, Hair dryer.

Max Capacity: Anchorage/Loft Suite – 2.



OAKS PORT STEPHENS PACIFIC BLUE RESORT



Hotel

265 Sandy Point Road, Salamander Bay, Port Stephens
MAP PAGE 27

From **\$176*^**

- ❖ Home to one of the largest swimming pools in Australia
- ❖ Rooms with lagoon view balconies, pool access or private plunge pools
- ❖ Spacious self-contained apartments are great for families

Location: Situated in the coastal holiday haven of Salamander Bay. Just minutes from shopping and the beach. Distances: Beach 1km, Shop 100m.

Property Features: Pools (2 – 1 lagoon style with island beach and children's area, 1 heated lap), Spa, Gym, Tennis courts (2 – floodlit), Guest laundry, Parking (free), 215 rooms.

Room Features: Private plunge pool (2 and 3 Bedroom), Air-conditioning, Balcony, Kitchen (1, 2 and 3 Bedroom), Tea/coffee making facilities.

Max Capacity: Studio Lagoon/Studio Swimout/1 Bedroom Lagoon/1 Bedroom Lagoon Spa/1 Bedroom Swimout – 2, Hotel/1 Bedroom Hotel – 3, 2 Bedroom Dual Lagoon Spa/2 Bedroom Swimout/2 Bedroom Dual Key Swimout – 4, 2 Bedroom Lagoon Spa – 4, 2 Bedroom Lagoon/2 Bedroom Plunge Pool – 5, 3 Bedroom Plunge Pool – 7.

^Price applies Sun-Thu nights.

* FROM PRICES ARE A GUIDE ONLY, subject to change and availability and are in Australian Dollars. Prices are per room per night for 2 people, unless otherwise specified and based on the lowest room category for travel in low season. For full terms and conditions, refer to the Booking Conditions on the inside back cover of this brochure.

COASTAL NEW SOUTH WALES ACCOMMODATION

RYDGES NEWCASTLE



Cityside Suite

Wharf Road, Newcastle
MAP PAGE 27

From **\$290***

- ❖ Absolute waterfront location close to museums and beaches
- ❖ Wharf 350 offers modern Australian dining overlooking the water
- ❖ Large suites with gorgeous views of the harbour or city

Location: Sitting among the waterfront boutiques, cafés, bars and eateries of the iconic Honeysuckle Promenade. Distances: Riverfront, City centre 500m.

Property Features: Pool, Restaurant, Bar, Room service, Gym, Valet parking (extra charge), 175 rooms.

Room Features: Air-conditioning, Mini bar, Tea/coffee making facilities, Ironing facilities, Hair dryer.

Max Capacity: Cityside Suite/Harbourside Suite – 2 adults/2 children.



OAKS THE ENTRANCE WATERFRONT SUITES



Studio

89 The Entrance Road (via, Duffys Ln), The Entrance
MAP PAGE 27

From **\$176*^**

- ❖ Family friendly accommodation
- ❖ Unparalleled views over the crystal waters of Tuggerah Lake
- ❖ Take in the views from the dazzling rooftop pool

Location: Conveniently located in the picturesque seaside town of The Entrance. Distances: Beach 1km, The Entrance Ocean Baths 1.6km, City centre 300m.

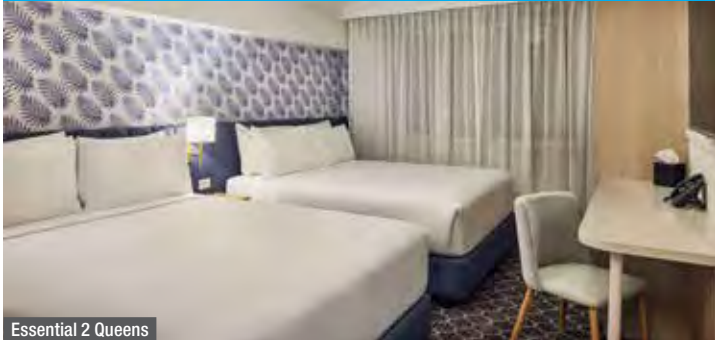
Property Features: Pool, Gym, Guest laundry, 24 hour reception, Parking (undercover – extra charge), 127 rooms.

Room Features: Air-conditioning, Tea/coffee making facilities, Mini bar, Ironing facilities, Hair dryer.

Max Capacity: Studio/Studio Ocean View/One Bedroom Apartment/One Bedroom Loft/One Bedroom Ocean View – 3, Two Bedroom Apartment/Two Bedroom Loft/Two Bedroom Ocean View – 5.

^Price applies Sun-Thu nights.

BEACHCOMBER HOTEL & RESORT, TOUKLEY



Essential 2 Queens

200 Main Road, Toukley
MAP PAGE 27

From **\$200***

- ❖ Hamptons-inspired ambience, boutique-style accommodation
- ❖ Enjoy a cocktail by the pool at Club Cyan
- ❖ Stylish well appointed rooms

Location: On the waterfront in the heart of Toukley and close to boutique shops, beaches and national parks. Distances: Town centre 500m.

Property Features: Pool (heated), Spa, Pool bar, Restaurants (2), Bars (2), Room service, Laundry service, 24 hour reception, Non smoking, Parking (free), Lifts, 83 rooms.

Room Features: Air-conditioning, Balcony (Urban King), Sitting area (Urban King), Tea/coffee making facilities, Mini fridge, Smart TV, Ironing facilities, Hair dryer, Safe.

Max Capacity: Essential 2 Queens (no windows) – 4, Urban King – 2.



***FROM PRICES ARE A GUIDE ONLY**, subject to change and availability and are in Australian Dollars. Prices are per room per night for 2 people, unless otherwise specified and based on the lowest room category for travel in low season. For full terms and conditions, refer to the Booking Conditions on the inside back cover of this brochure.

COASTAL NEW SOUTH WALES ACCOMMODATION

BELLS AT KILLCARE BOUTIQUE HOTEL & SPA, KILLCARE HEIGHTS ♦♦♦♦



107 The Scenic Rd, Killcare Heights
MAP PAGE 27

From **\$527** **^

- ❖ Hamptons-inspired boutique hotel a 90 minute drive from Sydney
 - ❖ Unwind in the luxurious Bells Day Spa
 - ❖ The Wild Flower Bar & Dining offers seasonal dishes focussed on local produce
- Includes à la carte breakfast.**

Location: Situated on the spectacular NSW Bouddi Peninsula with many coastal bushwalks to explore. Distances: Beach 1km, Sydney 94km.

Property Features: Pool, Pool bar, Restaurant, Bakery, Day spa, Yoga and pilates classes (extra charge), Room service, Guest lounge, Laundry service, Library, Non smoking, Parking (outdoor).

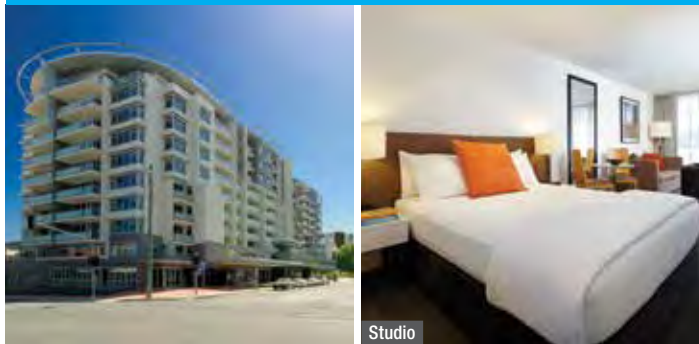
Room Features: Air-conditioning, Tea/coffee making facilities, Limited cooking facilities (One and Two Bedroom Cottage), In-room movies, Fireplace, Bathrobes, Slippers, Hair dryer, Safe.

Max Capacity: King Suite/Garden Villa/Deluxe Two Storey Cottage/Lakeview Villa/ One Bedroom Cottage – 2, Two Bedroom Cottage – 4.

^Price applies Sun-Thu nights.



ADINA APARTMENT HOTEL WOLLONGONG ♦♦♦♦



19 Market Street, Wollongong
MAP PAGE 27

From **\$253** *

- ❖ Spacious self-contained apartments
- ❖ Outdoor pool area, fitness room and sauna
- ❖ Within walking distance to local restaurants and shops

Location: In the heart of the city, walking distance to the beautiful beaches. Distances: Beach 500m, Town centre 600m.

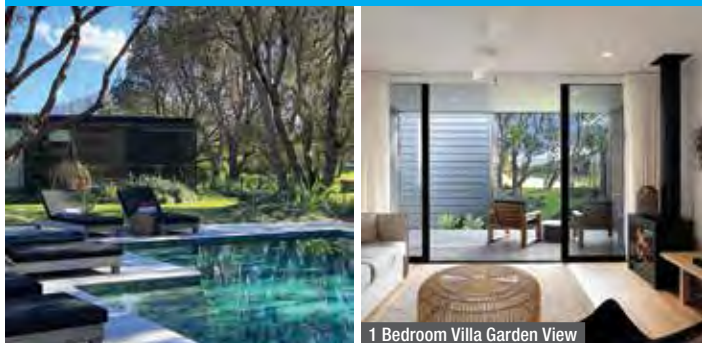
Property Features: Pool, Spa, Exercise equipment, Sauna, Dry cleaning service, Guest laundry, 24 hour reception, Parking (free), 71 rooms.

Room Features: Air-conditioning, Balcony, Kitchen with dishwasher (1 and 2 Bedroom), Microwave, Tea/coffee making facilities, In-room movies (pay to view), Washer/dryer (1 and 2 Bedroom), Ironing facilities, Hair dryer, Safe.

Max Capacity: Studio/1 Bedroom – 3, 2 Bedroom – 5.



BANGALAY LUXURY VILLAS, SHOALHAVEN HEADS ♦♦♦♦



30 Staples Street, Shoalhaven Heads
MAP PAGE 27

From **\$625** **^

- ❖ Luxury villas set among the Bangalay Sand Forest
- ❖ Close to local walking tracks
- ❖ Bangalay Dining serves fresh local and regional produce

Includes full breakfast and complimentary happy hour cocktail daily.

Location: Only 300 metres from Seven Mile Beach and a short drive to the boutique towns of Berry, Kangaroo Valley and Kiama. Distances: Beach 300m, Town centre 1km.

Property Features: Pool (heated outdoor), Restaurant, Bar, Parking (free), 16 rooms.

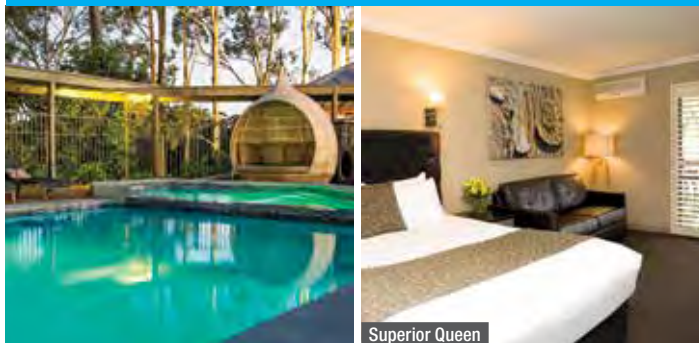
Room Features: Air-conditioning, Patio, Kitchen with dishwasher and microwave, Tea/coffee making facilities, Washer/dryer, Ironing facilities, Hair dryer.

Max Capacity: 1 Bedroom Villa Garden View/1 Bedroom Villa Golf View – 4, 2 Bedroom Villa Garden View – 6.

^Price applies Sun-Thu nights. Minimum 2 night stay applies.



LINCOLN DOWNS RESORT BATEMANS BAY ♦♦♦♦



11683 Princes Highway, Batemans Bay
MAP PAGE 27

From **\$200** *

- ❖ Boutique country retreat overlooking a private lake with English-style gardens
- ❖ Outdoor heated pool, tennis courts and gym
- ❖ Rooms feature floor-to-ceiling windows with beautiful garden views

Location: Overlooking a picturesque private lake, close to the beach. Distances: Beach 1.8km, Town centre 1.5km.

Property Features: Pool (heated outdoor), Restaurant, Bar, Room service, Tennis court, Gym, Guest laundry, Parking (free), 32 rooms.

Room Features: Air-conditioning, Tea/coffee making facilities, Coffee pod machine, Mini bar, Cable TV, Hair dryer.

Max Capacity: Superior Queen – 3, Executive Queen/Executive King Spa – 2, 2 Bedroom Family Suite – 2 adults/2 children.





Tinklers Wine, Pokolbin

Destination NSW

HUNTER VALLEY

The Hunter Valley is best known for its wine but there's so much more to this picturesque region. Just two hours by car from Sydney, you'll find beautiful scenery and charming villages. There's plenty to do with golf courses, day spas and more. The Hunter is the ultimate holiday destination for wine lovers with more than one hundred wineries and cellar doors to explore!

SEE

- See manicured gardens, hedge mazes, waterfalls, statues and murals at the beautiful Hunter Valley Gardens

DO

- Discover the historic and charming towns of Maitland, Paterson and Morpeth

EAT & DRINK

- Taste wines at well-established vineyards such as Tulloch and Lindeman's
- Sample the many cheeses available at the Smelly Cheese Shop, Pokolbin
- Take your tastebuds on a culinary journey at Muse Kitchen or Circa 1876, Pokolbin

WHAT'S ON

Lovedale Long Lunch

18 to 19 May

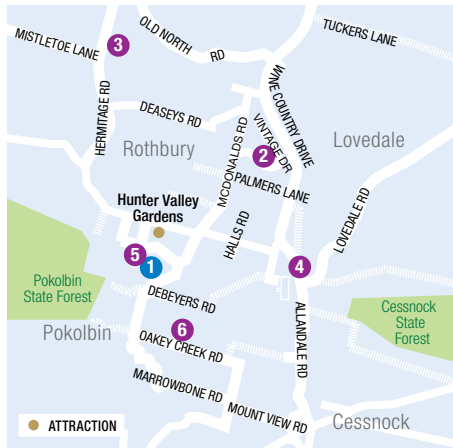
Hunter Valley Wine & Beer Festival

22 June



Hunter Valley Gardens, Pokolbin

Destination NSW



REF.	APARTMENTS	PAGE
1	Oaks Cypress Lakes Resort	34

REF.	HOTELS	PAGE
2	Château Élan Hunter Valley	35
3	Hunter Valley Resort	34
4	Rydges Resort Hunter Valley	35
5	Spicers Guesthouse	35
6	voco Kirrkton Park Hunter Valley	35



SNAPSHOT TOUR

An ideal taste of what the Hunter Valley has to offer, perfect for those in the region for a limited amount of time. Visit two boutique wineries for private tasting sessions and conclude the tour with a cheese and wine matching experience.

Includes:

- VIP tastings at 2 wineries
- Chocolate and wine or cheese and wine matching experience
- Experienced and entertaining local guide
- Return transfers from selected Hunter Valley accommodation

Operator: Two Fat Blokes Gourmet Tours

Duration: 3 hours

Departs: Daily from Hunter Valley at 9:30am, 1:30pm

Not suitable for children under 18 yrs.

	Adult
Winery Tour	\$109*



UNCORK THE HUNTER

Discover the best of the Hunter Valley, with unique wine encounters that are not available to walk-in wine-tasters. Enjoy multiple wine tastings, a cheese and wine masterclass, antipasto grazing lunch and brewery tour.

Includes:

- Chocolate and wine pairing experience
- Cheese and wine masterclass
- Gourmet picnic lunch and glass of wine
- Hunter Valley Beer Co. brewery tour
- Experienced and entertaining local guide
- Return transfers from selected Hunter Valley accommodation

Operator: Two Fat Blokes Gourmet Tours

Duration: 7 hours

Departs: Daily from Hunter Valley at 9am

Not suitable for children under 18 yrs.

	Adult
Winery Tour	\$220*



PICNIC AMONG THE VINE

Enjoy a self-guided tour of the museum, followed by a master class and premium tasting with an Audrey Wilkinson wine expert. Then, collect your bottle of handpicked wine along with a picnic hamper and select a scenic location within this 270 acre property to enjoy the picturesque view. Immerse yourself among the vines where you will feel as though you have the whole vineyard to yourself.

Includes:

- Self-guided museum tour
- Premium wine tasting
- Picnic hamper, bottle of wine and etched glassware

Operator: Audrey Wilkinson Winery

Duration: 2 hours

Departs: Daily from Audrey Wilkinson Winery at 10:30am, 12pm, 1:30pm, 3pm

Not suitable for children under 18 yrs.

	Adult
Winery Tour	\$90*

*PRICES ARE A GUIDE ONLY, subject to change and availability and are in Australian Dollars. Prices are per person, unless otherwise specified and based on travel in low season. For full terms and conditions, refer to the Booking Conditions on the inside back cover of this brochure.

HUNTER VALLEY TOURS & ACCOMMODATION



THE BROKENWOOD JOURNEY

Enjoy an exclusive behind the scenes tour and tasting at Brokenwood Wines. The journey begins with an intimate tasting in the private tasting room. Your host will guide you through six premium wines complemented by six specially prepared canapés. The experience continues with a behind the scenes tour of the winery where you will learn all aspects of winemaking and delve deep into the history of Brokenwood Wines. Your tour ends in the barrel hall with the opportunity to taste pre-release Brokenwood wine straight from the barrel.

Includes:

- Guided winery tour • Premium barrel tasting
- Tasting of 6 wines paired with 6 canapés

Operator: Brokenwood Wines

Duration: 2 hours

Departs: Mon to Thu from Brokenwood Wines at 11am

Not suitable for children under 18 yrs.

	Adult
Winery Tour	\$125*



VIP TASTING EXPERIENCE

Discover over 160 years of family winemaking on a visit to Tyrrell's, one of the oldest family owned wineries in Australia. Join a member of the Tyrrell's team on the VIP Premium Tasting Experience as they take you on a journey through some of the most iconic and award winning Tyrrell's wines. Enjoy a tutored tasting of several of the best Winemaker's Selection wines, including both current vintages and aged release wines that have been carefully selected from the Tyrrell family's private cellar.

Includes:

- Tutored tasting of Single Vineyard and Winemaker's Selection ranges including museum wines

Operator: Tyrrell's Vineyards

Duration: 1 hour

Departs: Daily from Tyrrell's Vineyard at 10am, 11:15am, 12:30pm, 1:45pm, 3pm

Not suitable for children under 18 yrs.

	Adult
Winery Tour	\$75*



SACRED SITES VINEYARD EXPERIENCE

Tyrrell's Sacred Sites are some of the most distinguished pockets of vineyard land in Australia, having survived the test of time and consistently making exceptional wines that have their own distinct character and unique qualities. Enjoy a private and personalised tour of the Sacred Sites vineyards followed by an in depth winery tour and barrel tasting.

Includes:

- Guided tour of Sacred Sites vineyards
- In depth winery tour and barrel tasting
- Tutored tasting of the Sacred Sites collection with accompanying charcuterie board

Operator: Tyrrell's Vineyards

Duration: 3 hours



Departs: Mon to Fri from Tyrrell's Vineyard at 2pm

Not suitable for children under 18 yrs.

	Adult
Winery Tour	\$475*

HUNTER VALLEY RESORT

◆◆◆◆

Hunter Room

Corner Hermitage Road & Mistletoe Lane, Pokolbin
MAP PAGE 33

From **\$275***

- ◆ Daily wine tasting at Hunter Farm Wine Cellar Door
- ◆ Enjoy a pint with a view at 4 Pines at the Farm brewery
- ◆ Two Bedroom Cottage is ideal for families

Includes light breakfast daily.

Location: Nestled within 45 year old shiraz vineyards on 70 secluded acres in the very heart of the famous Hunter Valley Wine Country. Distances: Hunter Valley Gardens 9.2km, Cessnock 19.6km.

Property Features: Cellar door, Pool, Restaurant, Café, Bar, Tennis court (floodlit), Children's play area, Bicycle hire, Guest laundry, Parking (free), Tesla high speed charger, 35 rooms.

Room Features: Air-conditioning, Balcony/patio, Tea/coffee making facilities, Mini bar, Hair dryer.



Max Capacity: King Room/Spa Cottage Room – 2, Hunter Room – 4, 2 Bedroom Cottage – 6.

Wine Train to the Hunter Valley and Hot Air Balloon Flight packages are also available.



OAKS CYPRESS LAKES RESORT

◆◆◆◆

1 Bedroom Villa

Corner McDonalds & Thompsons Roads, Pokolbin
MAP PAGE 33

From **\$260*^**

- ◆ Modern villas with private balconies overlooking bushland and golf course
- ◆ Features three pools, golf course and country club and two bars
- ◆ Close to wineries and Hunter Valley Gardens

Location: Nestled in 300 acres of bushland in the Hunter Valley, a short distance from Hunter Valley Gardens. Distances: Hunter Valley Gardens 1.5km, Cessnock 12km.

Property Features: Golf course (18 hole), Pools (3), Spa, Restaurant, Bar, Gym, Tennis courts (2), 24 hour reception, Parking (free), Free resort shuttle bus service, 132 rooms.

Room Features: Air-conditioning, Balcony, Ironing facilities, Cable TV, Limited cooking facilities.

Max Capacity: 1 Bedroom Villa/1 Bedroom Premier Villa – 3, 2 Bedroom Villa/2 Bedroom Premier Villa – 5, 3 Bedroom Villa/3 Bedroom Premier Villa – 7.

^Price applies Sun-Thu nights.



HUNTER VALLEY ACCOMMODATION

CHÂTEAU ÉLAN HUNTER VALLEY



Villa Studio

Vintage Drive, Rothbury
MAP PAGE 33

From **\$265** *[^]

- ❖ Greg Norman-designed 18 hole golf course
- ❖ Large spacious rooms, some with fireplaces
- ❖ All rooms have balconies or terraces with lovely views

Includes full breakfast daily.

Location: In the heart of the Hunter Valley wine country overlooking fairways and vineyards. Distances: Hunter Valley Gardens 5.9km, Cessnock 15km.

Property Features: Golf course (18 hole), Pool, Spa, Restaurant, Café, Day spa, Gym, Tennis court (floodlit), Parking (free), 100 rooms.

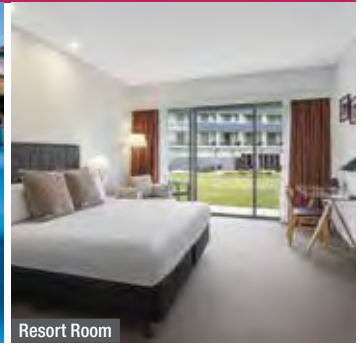
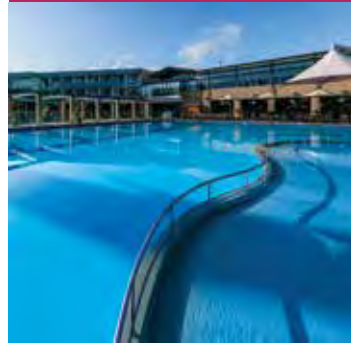
Room Features: Air-conditioning, Balcony or terrace, Tea/coffee making facilities, Coffee pod machine, Mini bar, Spa bath, Bathrobes, Hair dryer.

Max Capacity: Villa Studio – 2, 1 Bedroom – 3 or 2 adults/2 children.

[^]Price applies Sun-Thu nights.



RYDGES RESORT HUNTER VALLEY



Resort Room

430 Wine Country Drive, Lovedale
MAP PAGE 33

From **\$334** *[^]

- ❖ Kids will love the one-of-a-kind water park
- ❖ Day Spa and 18 hole golf course
- ❖ Hire a bicycle to explore the vineyards and countryside

Location: Located with easy access to wineries, cheese and chocolate factories and local attractions. Distances: Hunter Valley Gardens 5km, Cessnock 6.5km.

Property Features: Golf course (18 hole), Micro-beer brewery, Pools (2 – 1 adults only), Spa, Restaurants (2), Café, Bar, 24 hour room service, Hair salon, Kids club 3-12 years (operating school holidays – extra charge), Ubika day spa, Gym, Tennis courts (2), Basketball court, Volleyball court, Parking (free), 418 rooms.

Room Features: Air-conditioning, Balcony or patio, Tea/coffee making facilities, Limited cooking facilities (Villa), Smart TV with Chromecast, In-room movies (pay to view).

Max Capacity: Resort Room – 2, 1 Bedroom Villa – 3, 2 Bedroom Villa – 4, 3 Bedroom Villa – 6.



VOCO KIRKTON PARK HUNTER VALLEY



Standard Room

336 Oakey Creek Road, Pokolbin
MAP PAGE 33

From **\$320** *[^]

- ❖ Elegant manor estate set on 70 acres of stunning countryside
- ❖ Perfect for couples wanting a romantic escape
- ❖ Visit the Cellar Doors and taste delicious Australian wines

Location: In the heart of Pokolbin and surrounded by wineries and acclaimed restaurants. Distances: Hunter Valley Gardens 8.5km, Cessnock 7km.

Property Features: Pool (heated indoor), Spa, Restaurants (2), Bar, Gym, Sauna, 24 hour reception, Parking (free), 70 rooms.

Room Features: Air-conditioning, Tea/coffee making facilities, Mini bar, Cable TV, Ironing facilities, Hair dryer.

Max Capacity: Standard Room/Grand Room – 3.

[^]Price applies Sun-Thu nights.



SPICERS GUESTHOUSE



57 Ekerts Rd, Pokolbin
MAP PAGE 33

From **\$399** *[^]

- ❖ Modern country farmhouse ambience in the heart of the Hunter Valley
- ❖ Luxuriously appointed rooms with a classic contemporary feel
- ❖ Seasonal and fresh, eRemo Restaurant is a celebration of modern Italian cuisine

Includes full breakfast daily.

Location: Perfectly situated for exploring the traditional cellar doors and vineyards of the Hunter Valley Wine region, just one hour from Newcastle airport and two hours from Sydney. Distances: Hunter Valley Gardens 2.7km, Cessnock 14km.

Property Features: Pool, Spa (heated), Restaurant, Bar, Guest Lounge, Tennis court, Bicycle rentals, Lift, Non smoking, Parking (free), 45 rooms.

Room Features: Air-conditioning, Cable TV, Bluetooth speaker, Tea/coffee making facilities, Mini bar, Ironing facilities, Heated towel rails, Bathrobes, Hair dryer, Safe.

Max Capacity: Piccola King Room/King Room – 2, King Deluxe Room/Garden Suite/Hunter Suite – 2 adults/1 child, The Cottage – 8.

[^]Price applies Sun-Thu nights.



BLUE MOUNTAINS, ORANGE & DUBBO

Home to the Three Sisters, the Blue Mountains feels like another world away, yet it's less than a two hour drive from Sydney. Just over an hour further on, get back to nature at Bowen Mountain.

Orange is a thriving country town renowned for its award-winning restaurants, wineries, boutique shops, stunning gardens and lively markets.

In the heart of the Great Western Plains, the historic town of Dubbo is the perfect setting for a relaxed getaway. Find yourself surrounded by wildlife on the wide-open plains at Taronga Western Plains Zoo.



Jamison Valley, Blue Mountains

Tourism Australia

SEE

- Admire stunning views from Wentworth Falls, Govetts Leap or Echo Point lookouts

DO

- Take a ride on the Railway, Skyway and Cableway at Scenic World
- Visit Taronga Western Plains Zoo

EAT & DRINK

- Grab a bite to eat at Bowery, a popular restaurant in the historic St Andrew's church at Katoomba



Taronga Western Plains Zoo, Dubbo

Destination NSW

REF.	HOTELS	PAGE
1	Discovery Parks - Dubbo	38
2	Echoes Boutique Hotel	37
2	Lilianfels Blue Mountains Resort & Spa	37
3	The Remington Orange	38
4	Spicers Sangoma Retreat	37
1	Taronga Western Plains Zoo – Zoofari Lodge	38
5	The Hydro Majestic Hotel	37



BLUE LABYRINTH E-BIKE TOUR

On this private fully guided, and beginner friendly soft off-road e-bike adventure, the Blue Labyrinth tour takes you through the lower Blue Mountains National Park. Ride easy dirt fire trails and be spoiled with views of sandstone cliffs, deep valleys and gorges, rivers, giant ancient eucalypt trees, flora and fauna. If you can ride a bike safely, you will love this!

Includes:

- Mountain e-bike and helmet
- Rider safety and skill briefing, ongoing coaching
- Snacks and keepsake water bottle
- Photos and videos • Professional guide

Operator: Blue Mountains Biking Adventures

Duration: 3 to 4 hours

Departs: Mon to Fri from Glenbrook Train Station at 8:30am

Not suitable for children under 11 yrs. Other tour options are available.

	Adult/Child /11+ yrs
Bike Tour	\$770*



SPARKLING MASTERCLASS

Hosted by one of Printhie's Sparkling Specialists, take a guided walking tour of the cellar door vineyard and gain a rare insight into the process of creating one of Australia's finest sparkling brands, from base wine to the disgorging and ageing process. Enjoy a private tasting of the Swift Sparkling range including wines over 10 years of age and a set five course degustation lunch at Printhie Dining with matching wines.

Includes:

- Guided walking tour of the cellar door vineyard
- Private tasting of the Swift Sparkling range
- 5 course lunch with matching wines

Operator: Printhie Wines

Duration: 5 hours

Departs: Thu to Sun from Printhie Wines Cellar Door, Orange at 11am

Not suitable for children under 18 yrs.

	Adult
Winery Tour	\$385*



TARONGA WESTERN PLAINS ZOO

Go on an expedition to see the wild at Taronga Western Plains Zoo in Dubbo. Whether you drive your own car, walk or ride around the zoo on hired bikes or carts (extra charge), it's a fun way to spend time together, away from it all. You can even hire a pedal boat (extra charge) and cruise past the primate islands or stay overnight and hear what the wild gets up to after dark at Zoofari Lodge.

Includes:

- Zoo admission for 2 consecutive days
- 5 kilometre circuit with rare and endangered animals
- Over 10 Keeper Activities daily
- New Wildlife Hospital – watch vets heal the wild
- Up close encounters and behind the scenes tours (extra charge)

Operator: Taronga Western Plains Zoo

Open: 9am – 4pm daily

	Adult	Child 4-15 yrs
Zoo Admission	\$48*	\$28*

BLUE MOUNTAINS ACCOMMODATION

THE HYDRO MAJESTIC HOTEL, MEDLOW BATH



Heritage Room

52/88 Great Western Hwy, Medlow Bath
MAP PAGE 36

From **\$306***[^]

- ❖ Art Deco inspired décor that reflect the rich heritage of this hotel
- ❖ High tea and or à la carte dinner in the Wintergarden restaurant
- ❖ Indulge in a cocktail at Cats Alley, while taking in the breathtaking views

Location: Located close to Katoomba and a short drive to Three Sisters and Echo Point. Distances: Town centre 6km, Three Sisters 13km.

Property Features: Restaurant, Bar, Tennis court (full size), Guest lounge, Non smoking, 24 hour reception, Parking, 82 rooms.

Room Features: Air-conditioning (reverse cycle), Refrigerator, Tea/coffee making facilities, Ironing facilities, Hair dryer.

Max Capacity: Heritage/Heritage Valley View/Belgravia/Belgravia Valley View/Hargravia Valley View/Delmonte Valley/Delmonte Valley View – 2.

[^]Price applies Sun-Thu nights.



ECHOES BOUTIQUE HOTEL, KATOOMBA



Deluxe View

3 Lilianfels Ave, Katoomba
MAP PAGE 36

From **\$466***[^]

- ❖ Indulge in a massage, reflexology or aromatherapy at the on-site spa
- ❖ Enjoy a meal at the on-site restaurant
- ❖ Enjoy access to the pool facilities at Lilianfels Blue Mountains Resort & Spa

Location: In the heart of Katoomba and only a short walk to Katoomba Railway Station and a short drive to the Three Sisters. Distances: Town centre 50m, Three Sisters 2.5km.

Property Features: Bar, Restaurant, Room service, Day spa, Reception (7am to 11pm), 14 rooms.

Room Features: Tea/coffee making facilities, Hair dryer, All rooms non smoking.

Max Capacity: Cliff View/Deluxe View – 2, Corner View Suite/Grand Deluxe View – 3 adults or 2 adults/2 children.

[^]Price applies Sun-Thu nights.



LILIANFELS BLUE MOUNTAINS RESORT & SPA, KATOOMBA



Deluxe Resort View Room

5/19 Lilianfels Ave, Katoomba
MAP PAGE 36

From **\$399***[^]

- ❖ Located in the heart of the World Heritage Listed Blue Mountains National Park
- ❖ Unwind and be pampered at the on-site Lilianfels Day Spa
- ❖ Enjoy high tea in the Lilianfels Lounge or an à la carte dinner in Darley's restaurant

Location: Located in the heart of the World Heritage Listed Blue Mountains National Park. Town centre 2km, Three Sisters 500m.

Property Features: Pools (2 – 1 heated, 1 indoor), Spa, Restaurants (2), Bar, 24 hour room service, Tennis court (full size), Day spa, Gym, Sauna, Guest lounge, Library, 24 hour reception, Non smoking, Parking (outdoor and undercover), 85 rooms.

Room Features: Air-conditioning, DVD player, Ironing facilities, Bathrobes, Hair dryer.

Max Capacity: Deluxe Resort View/Deluxe Spa Resort View/Deluxe Valley View – 2, Deluxe Twin Resort View – 4, Executive Resort View Suite/Grand Deluxe Resort View – 3 or 2 adults/2 children.

[^]Price applies Sun-Thu nights.



SPICERS SANGOMA RETREAT, BOWEN MOUNTAIN



70 Grandview Lane, Bowen Mountain
MAP PAGE 36

From **\$1999***[^]

- ❖ Private all-inclusive luxury retreat in the foothills of the Blue Mountains
- ❖ Luxuriously appointed suites surrounded by the beauty of the bush
- ❖ Savour fresh organic produce sourced locally in the Hawkesbury region

Includes all meals, beverages and arrival mini bar.

Location: Situated on the eastern edges of the Blue Mountain ranges, just 70 minutes drive from Sydney. Distances: Kurrajong 5km.

Property Features: Pool, Spa, Sauna, Sundeck, Restaurant, Bar, Spa Anise (day spa), Walking Tracks, Mountain bikes, Guest Lounge, Fireplace, Parking (free), 8 rooms.

Room Features: Fireplace, Air-conditioning, In-floor heating, Balcony, Smart TV, DVD player, Bluetooth speaker, Tea/coffee making facilities, Mini bar, Ironing facilities, Free standing bath tub, Bathrobes, Hair dryer, Safe.

Max Capacity: Bush Suite/Chief Suite/Escarpment Suite/Lodge Suite/Tent Suite – 2.

[^]Price applies Sun-Thu nights. Minimum 2 night stay applies.



ORANGE & DUBBO ACCOMMODATION

THE REMINGTON ORANGE



King

1517 Forest Road, Orange
MAP PAGE 36

From **\$352***

- ❖ Whitney's Restaurant & Bar offers an innovative menu highlighting the best produce the area has to offer
- ❖ Spacious, contemporary rooms

Includes full breakfast daily.

Location: Just minutes to Orange airport, Orange CBD and tourist attractions including some of the region's most respected vineyards. Distances: Orange City centre 5.5km.

Property Features: Restaurant, Bar, Room service, Gym, Guest laundry, Non smoking, Parking (free), 82 rooms.

Room Features: Air-conditioning, Ceiling fan, Smart TV with Chromecast, Mini bar, Tea/coffee making facilities, Ironing facilities, Hair dryer.

Max Capacity: King/Classic King/Easy Access King/Signature King – 2, Superior King – 3, Executive King/Family King/Premier King – 4.



DISCOVERY PARKS – DUBBO



Superior 2 Bedroom Cabin

154 Whylandra Street, Dubbo
MAP PAGE 36

From **\$253***

- ❖ A short drive to Taronga Western Plains Zoo
- ❖ Heated swimming pool for year-round use
- ❖ Spacious, well designed cabins with balconies or patios

Location: In country New South Wales, close to Old Dubbo Gaol, Dubbo Observatory and the Western Plains Cultural Centre. Distances: Dubbo 4km.

Property Features: Pool (heated outdoor), Waterpark, Bouncing pillow, Barbecue area, Camp kitchen, Games room, Movie room, Children's playground, BMX track, Guest laundry, Parking (free), 29 rooms.

Room Features: Air-conditioning, Balcony, Limited cooking facilities with microwave, Tea/coffee making facilities.

Max Capacity: Deluxe 2 Bedroom Cabin/Superior 2 Bedroom Cabin – 6.



TARONGA WESTERN PLAINS ZOO – ZOOFARI LODGE, DUBBO



Bushland View Lodge

Obley Road, Dubbo
MAP PAGE 36

From **\$826***

- ❖ Unique African-style lodges with views of bushland or animals from private deck
- ❖ Exclusive behind-the-scenes tours of the zoo
- ❖ Great for families

Includes African inspired banquet dinner and à la carte breakfast daily, two consecutive day admission to Taronga Western Plains Zoo, tours and bicycle hire.

Location: Alongside the Zoo's African Savannah, home to giraffes, rhinos, zebra, ostrich and antelope. Distances: Dubbo 4km.

Property Features: Free Wi-Fi (guest house only), Zoo, Pool, Restaurant, Bar, Guest lounge, Campfire, Fireplace, Parking (free), 15 rooms.

Room Features: Air-conditioning, Deck, Tea/coffee making facilities, Mini bar, Refrigerator, All rooms non smoking.

Max Capacity: Bushland View Lodge – 6, Animal View Lodge – 2.



Animal View Lodge

* FROM PRICES ARE A GUIDE ONLY, subject to change and availability and are in Australian Dollars. Prices are per room per night for 2 people, unless otherwise specified and based on the lowest room category for travel in low season. For full terms and conditions, refer to the Booking Conditions on the inside back cover of this brochure.



Australian War Memorial

Visit Canberra



REF.	APARTMENTS	PAGE
1	Adina Serviced Apartments Canberra Dickson	40
REF.	HOTELS	PAGE
2	Crowne Plaza Canberra	41
3	Hotel Kurrajong Canberra	40
4	Ovolo Nishi	41
5	QT Canberra	41



CANBERRA

A vibrant multicultural city, Canberra tells the story of Australia. Discover attractions such as the Australian War Memorial, Parliament House and the National Museum of Australia. The kids will love Questacon – The National Science and Technology Centre. See how athletes train at the Australian Institute of Sport and explore a world in miniature at Cockington Green Gardens. Enjoy a relaxing cruise on Lake Burley Griffin, sample award winning wines at a boutique cellar door and tempt your tastebuds in one of Canberra's funky dining precincts.

SEE

- See the huge flag and mast of Parliament House from below – you can walk beneath it
- Check out the views from Red Hill Lookout or Mount Ainslie

DO

- Be moved by the Last Post Ceremony, held every afternoon at the Australian War Memorial

EAT & DRINK

- Treat yourself with a funky dessert from Space Kitchen
- Dine at hip establishments in the Braddon foodie precinct

WHAT'S ON

Floriade
14 September to 13 October

Enlighten
1 to 11 March

Canberra Balloon Spectacular
9 to 17 March

CANBERRA TOURS & ACCOMMODATION



PRIVATE AIRPORT TRANSFERS

Arrive in style with a private car transfer.

With a history of excellence in chauffeured limousines, Royale Limousines is the ultimate in luxury and style. Whether you are travelling for business or pleasure, you are always guaranteed first class service.

At Royale Limousines, the primary concern for all staff, from chauffeurs and coach drivers right through to office and reservations staff, is to ensure that you are not only well looked after, but treated to an experience that exceeds even your best expectations.

Operator: Royale Limousines

	Sedan 1 to 2 People	Premium Sedan 1 to 2 People
Inner City Transfer	\$120* [^]	\$135* [^]
Canberra Airport to/from Canberra CBD	\$135* [^]	\$198* [^]

[^]Price based on per vehicle, one way.



HIGHLIGHTS OF CANBERRA TOUR

Canberra's best day tour encompasses all the highlights of Canberra. Witness the wonderful views of Canberra and the region from the top of Mount Ainslie. Visit NCA Exhibition Centre. Be guided through the corridors of power at Australia's Parliament House. Survey the Parliamentary Triangle and its national institutions. Explore the Australian War Memorial and experience the moving Last Post Ceremony.

Includes:

- Admission to Old Parliament House, National Capital Exhibition and Australian War Memorial
- Air-conditioned mini-van
- Expert local guide

Operator: Canberra Guided Tours

Duration: 8 hours

Departs: Daily from Jolimont Bus Centre and selected accommodation from 9:30am

	Adult	Child 8-12 yrs
Full Day Tour	\$179*	\$129*



CANBERRA WINE TOUR

A terrific full day tour, not only because of the magnificent wines you'll taste at a raft of cellar doors, but also for the beautiful rural landscapes through Canberra's wine region.

Shiraz is the flagship for reds and Riesling the flagship for whites in this Cool Climate Wine Region, as well as a multitude of other varieties; viognier, pinot noir, and cabernet, distinguished wine aficionados and novices alike are sure to find something to their taste. Tasting fees are not included, allowing you to choose what you would prefer.

Includes:

- Air-conditioned mini-van • Expert local guide

Operator: Canberra Guided Tours

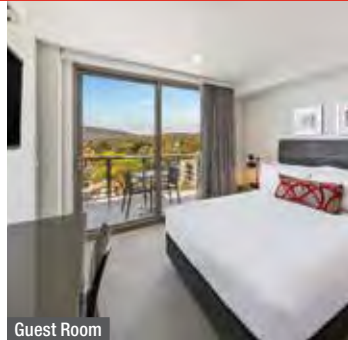
Duration: 7 hours

Departs: Daily on demand from Canberra at 10am

Not suitable for children under 18 yrs.

	Adult
Winery Tour	\$220*

ADINA SERVICED APARTMENTS CANBERRA DICKSON ◆◆◆◆◆



45 Doering Street, Dickson
MAP PAGE 39

From **\$224***

- ◆ A short drive to Canberra's nature reserves and lookouts
- ◆ Walking distance to restaurants and shopping
- ◆ Spacious light-filled rooms with balcony

Location: A short drive to Canberra CBD and situated in one of the city's premier retail precincts. Distances: City centre 2.9km, Capital Hill 7.4km, Airport 9.5km.

Property Features: Café, Lift, Non smoking, Parking (extra charge), 128 rooms.

Room Features: Air-conditioning, Balcony, Kitchen (1 Bedroom), Tea/coffee making facilities, Cable TV, In-room movies (pay to view), Docking station, Washer/dryer, Ironing facilities, Hair dryer.

Max Capacity: Guest Room – 2, 1 Bedroom – 3.



HOTEL KURRAJONG CANBERRA ◆◆◆◆◆



8 National Circuit, Barton
MAP PAGE 39

From **\$280***

- ◆ Heritage-listed hotel offering old world charm with a contemporary twist
- ◆ Modern conveniences blend seamlessly with Art Deco glamour
- ◆ Enjoy a Benny's Double, named after Prime Minister Ben Chifley, at the bar

Location: In the heart of Canberra, just a short stroll from Parliament House and less than a 10-minute drive from the CBD, with access to all the city's modern attractions, including a wide range of restaurants, cafés and bars. Distances: City centre 3.8km, Capital Hill 1km, Airport 6.9km.

Property Features: Restaurant, Bar, Room service, 24 hour reception, Gym, Parking (extra charge), 147 rooms.

Room Features: Air-conditioning, 55 inch TV with Chromecast, Tea/coffee making facilities, Mini bar, Ironing facilities, Hair dryer, Safe.

Max Capacity: Classic/Heritage – 2 adults and 1 child.



* FROM PRICES ARE A GUIDE ONLY, subject to change and availability and are in Australian Dollars. Unless otherwise specified, prices for day tours and transfers are per person and prices for accommodation are per room per night for 2 people based on the lowest room category. All prices based on travel in low season. For full terms and conditions, refer to the Booking Conditions on the inside back cover of this brochure.

CROWNE PLAZA CANBERRA



Standard

1 Binara Street, Canberra
MAP PAGE 39

From **\$255***

- ❖ Spacious rooms overlooking Canberra city or tranquil gardens
- ❖ Dedicated quiet zone rooms
- ❖ Great for couples

Location: In the heart of the CBD within walking distance of the city's shopping, dining and entertainment districts. Distances: City centre 750m, Capital Hill 3.4km, Airport 6.5km.

Property Features: Pool (outdoor, seasonal), Restaurant, Bar, 24 hour room service, Fitness centre, Sauna, Bicycle hire, 24 hour reception, Parking (extra charge), 296 rooms.

Room Features: Air-conditioning, Tea/coffee making facilities, Mini bar, Cable TV, Ironing facilities, Safe.

Max Capacity: Standard/Deluxe – 3 adults or 2 adults/2 children.



QT CANBERRA



QT King

1 London Circuit, Canberra
MAP PAGE 39

From **\$259***

- ❖ Luxury designer hotel near Lake Burley Griffin, dining and shopping
- ❖ Sophisticated restaurant, members lounge and speakeasy bar
- ❖ Rooms feature designer décor and modern conveniences

Location: Across the lake from Canberra's national attractions in the cultural arts precinct of New Acton. Close to restaurants and bars in central Canberra. Distances: City centre 1km, Capital Hill 2.5km, Airport 7.5km.

Property Features: Sundeck, Restaurant, Bar, Bicycle hire, Laundry/dry cleaning service, Lift, 24 hour reception, Non smoking, Parking (undercover – extra charge), 205 rooms.

Room Features: Air-conditioning, Balcony, Tea/coffee making facilities, Mini bar, Cable TV, Ironing facilities, Bathrobes, Hair dryer.

Max Capacity: QT Twin – 2, QT King/QT Superior King – 3.



OVOLO NISHI



Snug

25 Edinburgh Avenue, Canberra
MAP PAGE 39

From **\$313***

- ❖ Luxury boutique hotel with artistic, innovative and sustainable design
- ❖ Stylish rooms with unique vintage furnishings and original artworks
- ❖ Walking distance to Canberra's cultural centre

Location: In Canberra CBD near Commonwealth Park, restaurants, cafés and shops right on our doorstep! Five minute drive away from Parliament House and the beautiful Floriade display. Distances: City centre 1.2km, Capital Hill 3.4km, Airport 8km.

Property Features: Restaurant, Bar, Gym, Candy station (free), Library, Laundry/dry cleaning service, Non smoking, 24 hour reception, Parking (extra charge), 85 rooms.

Room Features: Air-conditioning, Tea/coffee making facilities, Mini bar, iPad, Smart TV, Apple TV, Amazon Alexa, Electric blinds, Ironing facilities, Bathrobes, Hair dryer, Safe.

Max Capacity: Snug/Creative/Original/Original Sun – 2.



ACCOMMODATION INDEX

NEW SOUTH WALES

SYDNEY

Adina Apartment Hotel Bondi Beach	26
Adina Apartment Hotel Coogee	26
Adina Apartment Hotel Sydney, Darling Harbour	22
Capella Sydney	24
Crown Towers Sydney	23
Crowne Plaza Sydney Darling Harbour	22
Four Seasons Hotel Sydney	24
Harbour Rocks Hotel Sydney	25
Holiday Inn Darling Harbour	20
Holiday Inn Potts Point Sydney	20
Ibis Styles Sydney Central	20
InterContinental Sydney	24
Mercure Sydney	21
Metro Aspire Hotel Sydney	21
Ovolo Woolloomooloo	25
Rydges Darling Square Apartment Hotel	22
Rydges World Square Sydney	23
Shangri-La Hotel, Sydney	25
Vibe Hotel Sydney	21
Wildlife Retreat at Taronga	26
The Woolstore 1888 by Ovolo	25

COASTAL NEW SOUTH WALES

Adina Apartment Hotel Wollongong	32
Anchorage Port Stephens	30
Bangalay Luxury Villas, Shoalhaven Heads	32
Beachcomber Hotel & Resort, Toukley	31
Bells at Killcare Boutique Hotel & Spa	32
Crystalbrook Byron	28
Discovery Parks – Byron Bay	28
Eco Beach Resort Byron Bay	28
Lincoln Downs Resort Batemans Bay	32
The Lord Byron	28
Oaks Nelson Bay Lure Suites	29
Oaks Port Stephens Pacific Blue Resort	30
Oaks The Entrance Waterfront Suites	31
Port Stephens Koala Sanctuary	30
Rydges Newcastle	31
Rydges Port Macquarie	29
Sanctuary Resort Coffs Harbour	29

HUNTER VALLEY

Château Élan Hunter Valley	35
Hunter Valley Resort	34
Oaks Cypress Lakes Resort	34

Rydges Resort Hunter Valley	35
Spicers Guesthouse	35
voco Kirkton Park Hunter Valley	35

BLUE MOUNTAINS

Echoes Boutique Hotel	37
The Hydro Majestic Hotel	37
Lilianfels Blue Mountains Resort & Spa	37
Spicers Sangoma Retreat	37

ORANGE

The Remington Orange	38
----------------------------	----

DUBBO

Discovery Parks – Dubbo	38
Taronga Western Plains Zoo – Zoofari Lodge	38

CANBERRA

Adina Serviced Apartments Canberra Dickson	40
Crowne Plaza Canberra	41
Hotel Kurrajong Canberra	40
Ovolo Nishi	41
QT Canberra	41



Byron Bay

Tourism Australia

Please read these Booking Conditions carefully as they apply to all bookings with Viva Holidays.

HOW TO BOOK

Contact your ATAS travel agent and request a reservation. All verbal quotes provided are an estimate only and subject to change until confirmed in writing.

PRICES & CONDITIONS

This brochure was produced on 8 February 2024. Unless otherwise stated, prices are in Australian dollars and include GST where applicable. All prices are subject to availability, subject to change and can be withdrawn or varied without notice. Prices are to be used as a guide only. Accommodation prices are based on the lowest room category in low season. All other prices are based on travel in low season. Price changes may occur by reason of matters outside our control which increase the cost of the Product or Service. Such factors include (without limitation) adverse currency fluctuations, fuel surcharges, or increase to taxes. Surcharges and minimum stays may apply due to demand, Christmas and New Year's Eve, school and public holidays, special events and other circumstances. All prices are the lowest available prices at the time of print and are a guide only. Please check all prices, availability, fees, conditions and information with your travel agent before booking.

If we must change any part of your booking for reasons beyond our control, for example, an Accommodation Supplier overbooks accommodation, or if there is an increase in taxes or Supplier charges, we will notify you. If any such changes result in your holiday costing more or otherwise being materially different from that originally booked, you may cancel the booking and we will refund any monies already paid less any charges levied by Suppliers.

PRICES DO NOT INCLUDE

Anything not specifically indicated as being an inclusion.

OMISSIONS & ERRORS

While every effort is made to ensure the accuracy and currency of the information in the brochures, errors or omissions may occur. All errors and omissions identified post the date of publication are notified to our retail partners to advise you. Please check with your agent for all up-to-date corrections, including prices and inclusions.

DEPOSITS & FINAL PAYMENTS

Deposit

A minimum non-refundable deposit of \$55 per person is payable within 7 days of confirmation of your booking. You will be notified at the time of booking if any additional deposit is required. All deposits are non-refundable for changes of mind or cancellations by you (subject to your rights under the Australian Consumer Law).

Final Payment

Final payment of your holiday cost is required no later than 30 days prior to departure or by sale end date or by the payment deadline specified in individual package conditions, whichever is earlier. Some services may require full payment at the time of booking. For bookings made less than 31 days prior to travel, full payment of holiday cost is required at the time your booking is confirmed.

Please ensure payments are made by the due dates. If this does not happen, our system will automatically cancel the booking without notice or liability to you.

Only upon payment of the full cost of your holiday do you have a final booking with the Supplier of the relevant good and/or service. In arranging your booking, Viva Holidays is acting as the agent of the Supplier of the relevant Product and at no time do you have a contract with Viva Holidays.

CREDIT & DEBIT CARD SURCHARGES

A fee will apply for payments made by debit and credit cards. Fees may vary depending on card type. Please check this fee with us or your travel agent when booking.

FEES

Amendment Fees

If you wish to change your booking prior to departure, an amendment fee of \$30 will be charged if the overall value of the booking remains the same or decreases, in addition to any fees imposed by the Supplier of each service booked.

Late Booking Fees

A fee of \$30 will be charged for all bookings made less than 7 days prior to travel.

All fees can be varied without notice.

CANCELLATIONS & REFUNDS

Prior to Final Payment

Your deposit is forfeited.

After Final Payment

There will be no refund of your deposit, in addition to any fees imposed by the Supplier, which may be up to 100% of monies paid.

After Travel

There will be no refund if you cancel your booking once travel has commenced. There will be no refund for unused services, except for OPEN DATED services where the service was not booked with the Supplier. Requests for refunds received more than 6 months after departure date will not be accepted.

Should a refund after departure be approved, a \$110 refund processing fee will apply.

RESPONSIBILITY

Viva Holidays acts as an agent for the Suppliers (transport, tour, event or accommodation providers) who provide the various goods and/or services (Products). All bookings are subject to the terms and conditions and limitations of liability imposed by each Supplier. It is therefore important for you to obtain and read the applicable Supplier's terms and conditions as they may limit or exclude their liability to you.

In producing this brochure, we have used information provided by Suppliers. Irrespective of any measures taken by us to ensure the information contained in this brochure is accurate at the time of printing, Viva Holidays disclaims and will be exempt from liability in respect of anything misleading, false, incomplete or inaccurate and any errors, misdescription and all associated disappointment, loss, expense, damage, inconvenience, delay, death, shock, illness or injury, however caused.

Viva Holidays does not control the manner in which Products featured within this brochure are provided. Viva Holidays disclaims and will be exempt from liability for anything to do with the supply of such Products. This includes liability (whether as a matter of contract, tort, statute, restitution, or otherwise) for any direct, indirect or consequential loss, liability, claim, cost, expense, proceeding, demand, penalty, disappointment, death, injury, illness, shock, inconvenience or delay. This limitation of liability also applies irrespective of the cause, including negligence of us or a Supplier, withdrawal, cancellation or failure to provide a Product, delay, any variation in the Product, the provision of substitute Products or a change in the Supplier. Without limitation, Viva Holidays will not be responsible if the Product is not available due to inclement weather conditions or other acts of God, civil disturbances, fire, floods, acts of Government or any other authorities, accident to or failure of machinery or equipment or industrial action.

MAPS & PHOTOGRAPHS

The maps in this brochure are intended as a guide only and are not to scale. They do not necessarily reflect actual routings or accommodation or attraction locations. Accommodation room photographs are representative only and actual rooms occupied may vary in decor and inclusions from those shown.

Some images used in this brochure are supplied courtesy of tourist bureaus, hotels, tour operators, Destination NSW, Tourism Australia, VisitCanberra, Alexandra Adoncello, Anna Kucera, Anson Smart, Cessnock City Council, Chris Holly, Dallas Kilponen, Dan Breckwoldt, Dan Gosse Images, Daniel Boud, Daniel Tran, Easton Chang, Elias Bitar, Filippo Rivetti, Hugh Stewart, James Bennett, Jason Benz Bennee, Jason Busch Photography, Jem Cresswell, Jesse Smith, Jinkyart, Ken Martin, Kirsten Cunningham Photography, Mauro Risch, McCann Worldwide Ltd, Miles Pritchard, Neale Bayliss, Richard Weinstein, Rick Stevens, Robert Gray, Taras Vyshnya, Time Out and Tyson Mayr.

PRODUCT DESCRIPTIONS

Product descriptions and accommodation ratings featured in this brochure are provided by the individual Suppliers. Facilities, features or ratings are subject to change at any time. Tours may not operate on certain dates and durations and departure times are approximate only. You should check at the time of booking for any changes to published information of which we may be aware.

BONDS

Bonds or credit card imprints are required by most Suppliers at the time of check-in to cover incidentals and fees not included in your holiday cost.

TRANSFERS & TOURS

Some Accommodation Suppliers provide courtesy transfers to/from the airport. It is essential that these transfers are pre-booked. Some Tour Suppliers provide complimentary pick up and return to your holiday accommodation and require a minimum number of passengers to operate. If minimum numbers are not achieved tours may be cancelled at short notice. Additionally, some Suppliers reserve the right to cancel departures for other reasons, including bad weather. Some tours and itineraries may also vary and attractions may be substituted due to seasonal conditions. Viva Holidays will not be held liable for a service variation, cancellation, delay or withdrawal, or a Supplier's failure to notify you. A full refund applies for the cancelled tour.

TRAVEL INSURANCE

We strongly recommend you take out appropriate travel insurance to cover your travel arrangements.

PRIVACY

Viva Holidays collects information about you (including health information where necessary) to provide products and services to you, process your travel arrangements, facilitate your participation in loyalty programs and conduct marketing activities and market research. If the information is not provided, Viva Holidays may not be able to provide the Service requested. Viva Holidays may disclose your personal information to its related companies, carriers, travel service providers, organisations which provide services to Viva Holidays (more details are available in our Privacy Statement on our website vivaholidays.com.au) and various law enforcement agencies, airports and governments around the world for security, customs and immigration purposes. You may gain access to the information Viva Holidays holds about you by contacting our Privacy Officer in writing at 179 Normanby Road, South Melbourne VIC 3205 Australia or on privacyofficer@vivaholidays.com.au.

MONIES NOT HELD ON TRUST

All monies paid by you to us will be the property of Viva Holidays and will be a debt due and payable to the relevant Supplier (contingent on availing) once the services to which the money relates have been availed, or the relevant booking is cancelled (subject to cancellation fees). You agree and acknowledge that such monies will not be held by Viva Holidays on trust for or on behalf of you, and we may hold such monies in any account as we see fit, including with our own and/or other customer monies.

GOVERNING LAW

These conditions are governed by the laws of New South Wales, Australia and any action arising under them or in any way connected with a booking may be brought only in a court in New South Wales, Australia, subject to any law which is expressly inconsistent with this.

You acknowledge that you are 18 years of age or older and that you understand and agree with the above terms and conditions and our Privacy Policy. Please read our full booking terms and conditions at vivaholidays.com.au/policies/booking-conditions.

CRUISE SYDNEY



Cruises • Private Charters • Events

Cruise beautiful Sydney Harbour on an exclusive, 78ft luxury cruiser with an all-inclusive, locally sourced menu and regional wines. Enjoy uninterrupted 360-degree harbour views aboard Cruise Sydney, a stylish way to experience one of the world's most iconic destinations.

JOURNEY BEYOND

helloworld
TRAVEL
THE TRAVEL PROFESSIONALS



In store



13 14 15



helloworld.com.au

WE'RE
PROUD
TO BE
ATAS
travel accredited

VIVA
HOLIDAYS