

helloworld
TRAVEL
THE TRAVEL PROFESSIONALS

THAILAND



VIVA
HOLIDAYS

CELEBRATING

50
Years
OF TRAVEL

EXPERIENCE THAILAND WITH VIVA HOLIDAYS!

Discover beautiful beaches surrounded by azure waters. Tempt your tastebuds with authentic, aromatic Thai food. Shop in the many colourful markets and admire the breathtaking Buddhist temples. The 'land of smiles' is renowned for its friendly people and unique culture.

Viva Holidays is proud to be celebrating 50 years in the travel business. Trust us to make your dream Thailand holiday a reality.

CHOOSE VIVA HOLIDAYS AND LIVE A LIFE OF TRAVEL.



Front cover image: Phra Nang Cave Beach, Krabi

Image this page: Twin Pagodas, Doi Inthanon National Park, Chiang Mai



Wat Phutthaisawan in an historic Thai Buddhist temple in the Ayutthaya Historical Park, and is more than 600 years old



Elephant Hills, Khao Sok National Park



Wat Arun 'Temple of the Dawn', Bangkok

CONTENTS

Navigating This Brochure	5
Travel Tips	7
Experiences You'll Love	8
Bangkok	12
Phuket	16
Elephant Hills	18
Patong Beach	19
Karon & Kata Beaches	24
Kamala & Bang Tao Beaches	30
Koh Phi Phi & Koh Yao	32
Khao Lak	34
Krabi	36
Koh Samui & Koh Phangan	38
Chiang Mai	46
Pattaya	48
Hua Hin	49
Accommodation Index	50
Booking Conditions	51



CELEBRATING



WHY CHOOSE VIVA HOLIDAYS

Viva Holidays has been creating exceptional worldwide holiday experiences for 50 years. Your arrangements will be managed by our travel specialists who are dedicated to servicing enquiries to your chosen destination and are experts at designing holidays to perfectly suit your travel needs. You'll always be in experienced hands when you travel with Viva Holidays.

MORE CHOICE

Our extensive product range caters for every type of holiday. Accommodation, car hire, theme parks, attractions, day and extended tours, rail tours and cruises – we've got it covered.

We have incredible deals available throughout the year, so make sure you ask your travel agent for our best price.

EXCEPTIONAL SERVICE

Exceptional customer service is behind everything we do. That's why we were recognised as the Most Outstanding Wholesaler – Product/Service at the 2023 National Travel Industry Awards. Our team are passionate about travel and providing outstanding service. Let us do the research, planning and booking to ensure your holiday is one you'll always remember.



NATIONAL TRAVEL INDUSTRY AWARDS

2023 WINNER

PEACE OF MIND

Viva Holidays is a proud member of ATAS, the Australian Federation of Travel Agents Travel Accreditation Scheme, having met the strict financial and customer service accreditation criteria. When you book your holiday with Viva Holidays, you will have peace of mind knowing that you are booking with one of Australia's most trusted travel companies.

24/7 ASSISTANCE

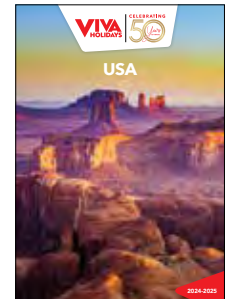
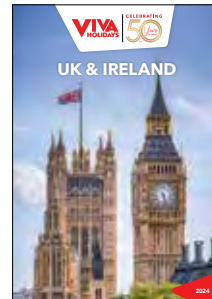
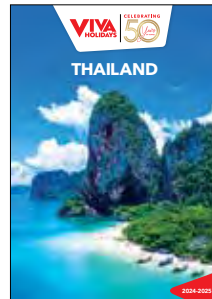
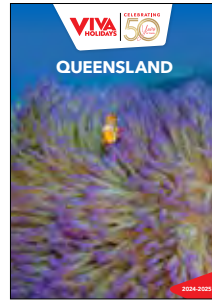
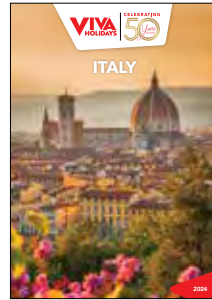
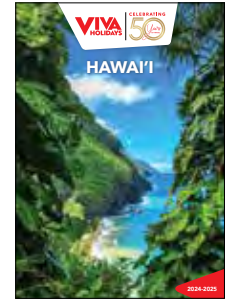
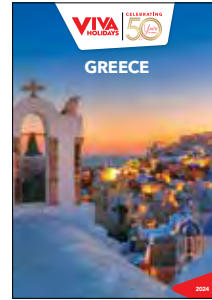
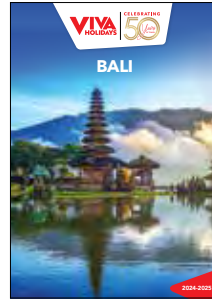
When you book with Viva Holidays, you'll never be on your own. In the event of unforeseen circumstances, our customer care team is available 24 hours a day, seven days a week.

TAILOR MADE HOLIDAYS

Whether it's sipping a cocktail at a rooftop bar in Bangkok, snorkelling the turquoise waters off Koh Phi Phi or simply lazing on the white sands of Chaweng Beach, our team of travel specialists can design a custom made itinerary just for you!

Let us create your dream holiday today.

LIVE A LIFE OF TRAVEL. LET VIVA HOLIDAYS TAKE YOU THERE!





Maya Bay, Phi Phi Leh



Bangkok

NAVIGATING THIS BROCHURE

The following symbols should be used as a guide to assist in choosing the accommodation or touring option that best suits your needs.

Our Destination Specialists have negotiated a range of special offers including free meals, free nights, early bird booking discounts and more. Look for the following symbols on individual property listings and ask your travel agent for full details of the offer available.



Early Bird Offer

A discount off the regular room price is available at certain times of the year for advance bookings.



Kids Dining Offer

A dining offer for children is available, e.g. discounted or free meals. Child ages, meal types and conditions vary.



Free Night Offer

Receive one or more free nights for stays at certain times of the year.



Honeymoon Offer

A special bonus offer is available if you are celebrating your honeymoon. This may include sparkling wine, flowers, chocolate or fruit platters, welcome drinks, romantic dinners, spa treatments, late check-out or room upgrades. A minimum stay may be required and conditions vary. Advise your travel agent at the time of booking.



Bonus Offer

A bonus offer is available at certain times of the year, e.g. free breakfast, food and beverage credit, spa treatment, late check-out, room upgrade and more.

SYMBOL GUIDE



FREE

Properties offering free Wi-Fi access in common areas and rooms.



Properties offering in-room disabled facilities.



Properties offering family friendly facilities, which may include a kids club, kids eat free offer, family or interconnecting rooms and discounts off a second room.



Villas offer a private and intimate alternative to a hotel stay. Generally villas are stand-alone with a separate living area and one or more bedrooms. Villas may include private pools, concierge and butler service. Ideal for families, large groups or longer stays.



Properties featuring the Luxury Collection symbol, in our view, provide an exceptional standard of accommodation, facilities and service.

OUR RATINGS

The accommodation ratings featured in this brochure will provide a general indication of the standard of accommodation and may alter throughout the year due to a change of circumstance. These are our views and are not related to any other rating system. We recommend checking with your travel agent to find the accommodation that best suits your needs and budget.



Comfortable



Superior



Deluxe



Half rating



• Krabi is famous for its impressive karst scenery, breathtaking beaches and colourful longtail boats





TRAVEL TIPS

WHEN TO GO

Thailand enjoys a tropical climate and is generally hot all year round. The best time to visit is November to February when the temperatures are slightly cooler and there is less rainfall.

VISAS & PASSPORTS

All travellers to Thailand must carry a passport valid for at least six months beyond the date of departure from Australia. A visa exemption of up to 45 days is permitted if entering via an international airport. As visa information can change at any time, we recommend you seek advice regarding passports, visas and other travel requirements for the countries you intend visiting from the Australian Government at smartraveller.gov.au.

TIME

Thailand is three hours behind Australian Eastern Standard Time (AEST).

ELECTRICITY

220V 50Hz. An adapter is required. Select hotels now have international sockets available to directly plug charging devices and appliances.

LANGUAGE

Thai is the official language, however English is widely understood, particularly in major tourist areas.

TEMPERATURE & RAINFALL

Phuket	J	F	M	A	M	J	J	A	S	O	N	D
Temperature (max °C)	32	33	34	34	33	32	32	31	31	31	31	32
Average rainfall (mm)	23	26	59	138	270	237	284	283	387	296	174	62
Koh Samui	J	F	M	A	M	J	J	A	S	O	N	D
Temperature (max °C)	29	30	31	32	33	32	32	32	32	31	30	29
Average rainfall (mm)	138	58	78	77	147	113	123	119	117	290	490	209
Bangkok	J	F	M	A	M	J	J	A	S	O	N	D
Temperature (max °C)	32	33	34	35	34	33	33	33	32	32	32	31
Average rainfall (mm)	9	30	29	65	220	149	155	197	344	242	48	10
Chiang Mai	J	F	M	A	M	J	J	A	S	O	N	D
Temperature (max °C)	29	32	35	36	34	33	32	31	32	31	30	28
Average rainfall (mm)	8	9	19	54	153	117	153	225	200	118	51	18

CURRENCY

Thailand's currency is the Baht.

SHOPPING

From the moment you reach Thailand, you'll be astounded by the sheer variety of goods on offer. At local markets and shopping centres (excluding the well known department stores) you'll find the real bargains. Bargaining is accepted just about everywhere except in supermarkets, department stores and hotels.

Tourists can claim VAT Tax Refund for purchase of goods with a value of THB2000 or more from select participating stores. On purchase, a passport must be presented for application forms to be processed. Goods, application form and original receipts must be presented at Customs prior to check-in for inspection and to VAT Refund for Tourist Office after immigration for the refund to be processed.

TIPPING & ETIQUETTE

Tipping is not customary; however a token of appreciation is always welcome.

Dress conservatively when visiting religious sites. Avoid wearing short skirts or shorts above the knee, singlets or sleeveless blouses. Remember to remove your shoes before entering a temple. Thai culture is unique so take some time to learn about the varying customs and requirements.



Ayutthaya Historical Park

EXPERIENCES YOU'LL LOVE

The best part of any journey is the experiences you have along the way, leaving you with memories to relive long after the holiday is over.

Thailand has countless amazing things to see and do. Here are 10 of our favourites to inspire your wanderlust.



Wachirathan Waterfall



Koh Phi Phi

DOI INTHANON NATIONAL PARK

Known as 'the Roof of Thailand', Doi Inthanon is one of the country's most popular national parks. Located in the Chiang Mai province, the park is home to over 600 bird species and mammals including elephants and tigers. The main attractions are amazing waterfalls, hiking trails and incredible vantage points to view both sunrise and sunset. Siamese Sakura pink blossoms cover the area for a few short weeks between January and February drawing locals from all over the country to view this spectacular sight.

KOH PHI PHI

Just a 45 minute speedboat ride or 90 minute ferry ride from Phuket or Krabi, you will discover the pristine white sands and turquoise sea of the Koh Phi Phi islands. Renowned for their natural beauty, the main islands of Phi Phi Don and Phi Phi Leh attract thousands of visitors a year. The waters surrounding the Phi Phi islands are filled with colourful marine life. Swim in the natural pools or don flippers and a mask to view the spectacular underwater life. Admire the sheer rock cliffs that tower above the beautiful bays or lounge on one of the stunning sandy beaches.



Slide into the turquoise waters of this natural swimming pool at Phi Phi Leh Island



Damnoen Saduak Floating Market

FLOATING MARKETS

No visit to Thailand is complete without experiencing all the colours, aromas and chatter of the floating markets. Watch produce-laden boats float by, piled high with colour. Sample the tasty treats on offer or purchase a souvenir or two. Some of our favourite markets are Damnoen Saduak (most popular), Amphawa (most authentic) and Khlong Lat Mayom (closest to Bangkok). Floating Markets are popular with Thai locals and tourists alike.



Damnoen Saduak Floating Market



SHOPPING

From amazing shopping malls to the hustle and bustle of the buzzing street markets, Thailand has a plethora of places to blow your baht. You'll find everything from the finest antiques to designer clothing, the softest Thai silks and a huge array of wonderful handicrafts. Visit one of the world's largest markets, Chatuchak Weekend Market with over 8,000 stalls. Shop for high-end fashion at ICONSIAM and Siam Paragon in Bangkok, Jungceylon and Central Shopping Mall in Phuket and Central Festival Mall in Koh Samui. Thailand is a shopaholic's paradise.

BRIDGE ON THE RIVER KWAI

Immerse yourself in the history of World War II as you travel to Kanchanaburi – home to the infamous Bridge on the River Kwai. Steeped in history, the bridge became famous when it was featured in the movie of the same name. The cliff-hugging tracks are surrounded by the natural beauty of the mountains and valleys. The track has been developed into a walkway, allowing visitors to cross the bridge either by foot or small train. Every year, from late November through early December, the River Kwai Bridge Festival is celebrated by a magnificent sound and light show.





Wat Arun, Temple of Dawn, is a stunning landmark along the Chao Phraya River in Bangkok, best viewed at sunrise or sunset

UNDERWATER PLAYGROUND

Thailand's crystal-clear waters, beautifully formed corals and spectacular marine life make it the perfect place for diving and snorkelling. Krabi and Ang Thong Marine Park are great spots for viewing vibrant coral gardens and colourful fish. Snorkel straight from the white sands of Kata Beach for some of the best underwater views in Phuket. Diving around the Similan Islands is one of Thailand's best kept secrets and home to manta rays and turtles. Slip on a pair of flippers and discover this underwater haven.



Krabi

ELEPHANT HILLS

For a 'back-to-nature' experience that is second to none, Elephant Hills is Thailand's first luxury tented Jungle Camp. It combines the camp experience of the African National Parks with the Thai tropical forest. Guests can interact with Asia's largest land animals by helping to clean them and prepare their meals. After the experience, guests are encouraged to watch the mammals play, interact and graze. Following strict ethical protocol, elephant riding is not offered at Elephant Hills.



Elephant Hills

PHANG NGA BAY

Upon entering Phang Nga Bay, you will be in awe of the size of the immense limestone karsts rising out of the emerald green water. This breathtaking scenery has been the backdrop for many blockbuster Hollywood movies including 'Star Wars: Episode III – Revenge of the Sith' and James Bond's 'The Man with the Golden Gun'. The easiest way to experience Phang Nga Bay and explore the surrounding caves, lagoons and beaches is on either a speedboat or kayak tour.



Phang Nga Bay



THAILAND TEMPLES

Eighty kilometres north of Bangkok, discover Ayutthaya Historical Park, a UNESCO World Heritage site. Inside, marvel at the temples and palaces of the original capital of Thailand. Artifacts discovered during excavations are on permanent display. Other temples (wats) to explore include 'the Sanctuary of Truth' in Pattaya, Wat Phra Kaew (the Temple of the Emerald Buddha) and Wat Arun (the Temple of Dawn) in Bangkok. The Temple is covered in porcelain. When lit by the morning sun, it is absolutely breathtaking.



Ayutthaya

THAI EATS

Thailand's flavoursome food is one of the reasons people visit again and again. Join in a cooking class and learn to create traditional Thai dishes. Venture into Bangkok's Chinatown or Khao San Road and sample street cuisine in a lively atmosphere. Watch as masterful chefs make up fresh food, spiced and flavoured to personal taste. Street food is a delicious and easy way to get a real feel for the local culture. Bangkok is also known for its Michelin-starred restaurants and amazing rooftop bars.



Visit Khao Phing Kan, widely known as James Bond Island, a famous landmark in Phang Nga Bay



Wat Phra Kaew, Temple of the Emerald Buddha

BANGKOK

Bangkok is a city of contrasts with adventure at every turn. Admire the mix of modern and ancient Thai architecture or catch a tuk-tuk along the bustling streets. Shop up a storm at the countless shopping malls or local markets and sample the fantastic Thai cuisine, from local dishes served at street stalls to fine dining at rooftop restaurants.

SEE

- Admire the magnificence of the Grand Palace, Bangkok's most famous landmark
- View the Reclining Buddha at Wat Pho, 15 metres tall and covered in gold leaf

DO

- Explore Chatuchak Weekend Market, home to over 8,000 stalls

EAT & DRINK

- Sip a cocktail at Rooftop Bar at Sala Rattanakosin and watch the sun set over Wat Arun and Chao Phraya River
- Wander to Banthat Thong Road, a street food haven offering mouthwatering Thai eats

WHAT'S ON

Songkran Festival

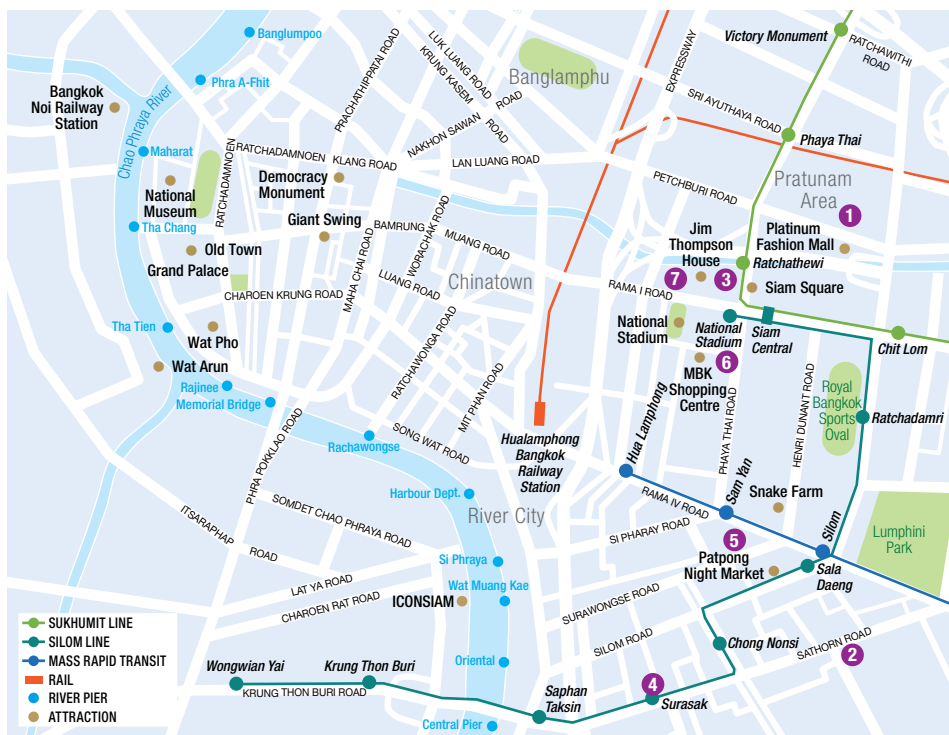
13 to 15 April

Royal Barge Procession

October (dates to be confirmed)

Loy Krathong Festival

15 November



REF.	HOTELS	PAGE
1	Amari Bangkok	14
2	Banyan Tree Bangkok	15
3	LiT BANGKOK Hotel & Residence	14
4	Mode Sathorn	14
5	Montien Hotel Surawong Bangkok	15
6	Pathumwan Princess Hotel	15
7	Siam@Siam Design Hotel Bangkok	14



PRIVATE AIRPORT TRANSFERS

Get your holiday off to a great start with a door to door private vehicle transfer service.

Convenient transfers are available from Bangkok's Suvarnabhumi International Airport to Bangkok accommodation, 24 hours a day, 7 days a week. Sit back, relax and be transferred in air-conditioned comfort.

Travel distance from Bangkok International Airport to the city is approximately 33 kilometres. Travel time depends on time of day and traffic.

	1 to 2 People	3 to 6 People
Bangkok Downtown	\$84* [^]	\$96* [^]

[^]Price based on per vehicle one way to/from Bangkok International Airport, without guide.



PRIVATE FLOATING MARKETS TOUR

Get a glimpse of everyday life in Thailand with a visit to the Damnoen Saduak Floating Market. An exhilarating narrow long-tailed speedboat ride through the marshes and stilt houses prepares you for this unique experience. Watch as local vendors in Thai-style canoes sell their colourful produce and handicrafts.

Includes:

- Damnoen Saduak Floating Market
- Long-tailed speedboat ride
- Expert guide/driver
- Transport by air-conditioned vehicle
- Return transfers from Bangkok accommodation

Duration: 4 hours

Departs: Daily from Bangkok at 6:15am

	2 People	3 to 5 People
Private Half Day Tour	\$104*	\$80*



PRIVATE GRAND PALACE & CITY TEMPLES TOUR

Take a drive through Bangkok's bustling centre and explore a dazzling complex of temples, palaces and gardens as you head to Bangkok's Grand Palace. Along the way, check out the gilded decorations and admire the green stone statue at the Temple of the Emerald Buddha. At the Temple of the Reclining Buddha, see the largest collection of Buddha images.

Includes:

- Expert guide/driver
- Transport by air-conditioned vehicle
- Return transfers from Bangkok accommodation

Duration: 4 to 5 hours

Departs: Daily from Bangkok at 7am

	2 People	3 to 5 People
Private Half Day Tour	\$144*	\$120*



PRIVATE BRIDGE ON THE RIVER KWAI WITH HELLFIRE PASS

The infamous Bridge on the River Kwai is one of the most visited attractions in the stunning Kanchanaburi Province. Visit the war cemetery and continue to Hellfire Pass Museum. Spend some time walking on the train track – Hellfire Pass, which was built with forced labour during World War 2, in part by Allied prisoners of war. After lunch return to Bangkok.

Includes:

- Train ride
- Expert guide/driver
- Lunch
- Transport by air-conditioned vehicle
- Return transfers from Bangkok accommodation

Duration: 9 hours

Departs: Daily from Bangkok at 6:15am

	2 People	3 to 5 People
Private Full Day Tour	\$221*	\$174*



RIVER BY NIGHT WITH DINNER

Treat yourself to a memorable night on board one of Bangkok's luxurious restaurant boats.

Relax in comfort and dine on a variety of Thai dishes while you slowly cruise along Chao Phraya River. Pass some of Bangkok's famous landmarks including, Wat Arun, the Grand Palace and see life along the river as it slowly unwinds after a busy day.

Includes:

- Guided tour along Chao Phraya River
- Traditional Thai music and dance
- Buffet dinner
- Return transfers from Bangkok accommodation

Duration: 2 hours 30 minutes

Departs: Daily from Bangkok at 5pm

	Adult	Child 3-11 yrs
Dinner Cruise	\$121*	\$94*



AYUTTHAYA – ANCIENT CAPITAL OF THAILAND

Travel 86 kilometres north of Bangkok, through rural countryside to Thailand's ancient capital Ayutthaya.

Once a thriving commercial centre, today only the ruins of this splendid city remain. From these ruins see how glorious this ancient capital used to be. Visit temples such as Wat Phra Si Sanphet, Wat Phutthaisawan and Wat Phra Mahathat to see an image of a Buddha head in tree roots.

Includes:

- Expert guide/driver
- Lunch
- Transport by air-conditioned vehicle
- Return transfers from Bangkok accommodation

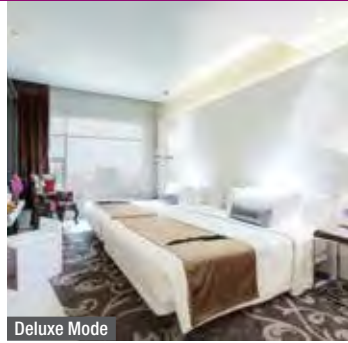
Duration: 9 hours

Departs: Daily from Bangkok at 6:15am

	Adult	Child 3-11 yrs
Full Day Tour	\$134*	\$101*

BANGKOK ACCOMMODATION

MODE SATHORN



Deluxe Mode

144 North Sathorn Road, Silom, Bangkok
MAP PAGE 12

From **\$162***

- ❖ 360 degree views from the rooftop bar on the 38th floor
- ❖ All rooms have a view of the Bangkok skyline and modern amenities
- ❖ Bars, entertainment and attractions are within easy access

Includes full buffet breakfast daily.

Location: Stylish hotel conveniently located in Silom area across the road from Surasak BTS and close to shopping and restaurants. Distances: Siam Paragon Mall 4.3km. Nearest BTS Skytrain station: Surasak.

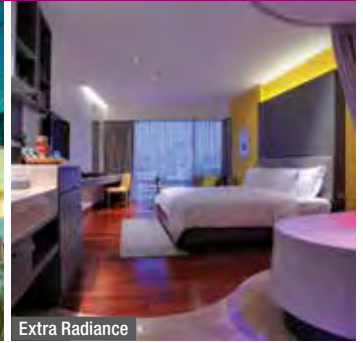
Property Features: Pool, Spa, Restaurant, Bars (2 – including rooftop bar), 24 hour room service, Day spa, Fitness centre, Sundeck, Sauna, Steam room, Guest laundry, Laundry/dry cleaning service, Lift, Non smoking, 24 hour reception, 201 rooms.

Room Features: Air-conditioning, Tea/coffee making facilities, Coffee pod machine, Mini bar, Smart TV, Cable TV, Ironing facilities, Bathrobes, Safe.

Max Capacity: Deluxe Mode – 2 adults/1 child, Executive Mode – 2.



LIT BANGKOK HOTEL & RESIDENCE



Extra Radiance

36/1 Soi Kasemsan 1, Rama1 Road, Pathumwan, Bangkok
MAP PAGE 12

From **\$217***

- ❖ Two bedroom suite options are great for families
- ❖ Walk to Siam Square, MBK and street food haven Banthat Thong Road
- ❖ Rooms are bright and make use of natural light

Includes full buffet breakfast daily and 1 x ten minute foot massage per person.

Location: Set within Bangkok's premier shopping, dining and entertainment district. Distances: Siam Paragon Mall 1 km. Nearest BTS Skytrain station: National Stadium.

Property Features: Pool, Spa, Restaurants (2), Bar, 24 hour room service, Day spa, Fitness centre, Steam room, Laundry/dry cleaning service, 24 hour reception, 127 rooms.

Room Features: Air-conditioning, Tea/coffee making facilities, Mini bar, Cable TV, Hair dryer, Bathrobes, Safe.

Max Capacity: Extra Radiance/Different Degree/Full Spectrum – 2, Triple Luxe Suite – 3, 1 Bedroom Superior Suite – 3, 1 Bedroom Deluxe Suite/1 Bedroom Duplex Suite – 2 adults/2 children, 2 Bedroom Deluxe Suite/2 Bedroom Duplex Suite – 4 adults/2 children.



SIAM@SIAM DESIGN HOTEL BANGKOK



Deluxe

865 Rama 1 Road, Wang Mai, Pathumwan, Bangkok
MAP PAGE 12

From **\$228***

- ❖ Chic, hip and arty hotel with bold, modern furnishings
- ❖ Walking distance to restaurants and entertainment venues
- ❖ Paradise Lost, a neo-tropical rooftop bar has 360-degree views of Bangkok

Includes full buffet breakfast daily.

Location: Perched overlooking the iconic National Stadium in the centre of the city. Distances: Siam Paragon Mall 1.4km. Nearest BTS Skytrain station: National Stadium.

Property Features: Pool (Infinity), Restaurants (2), Bar, Coffee shop, 24 hour room service, Gym, Laundry/dry cleaning service, 24 hour reception, 221 rooms.

Room Features: Air-conditioning, Tea/coffee making facilities, Mini bar, Cable TV, Hair dryer, Bathrobes and slippers, Safe.

Max Capacity: Deluxe/Grand Deluxe/Grand Deluxe Heritage/Club – 3, Grand Club/Grand Deluxe Family – 4, Heritage Suite/Club Heritage – 3 adults or 2 adults/2 children.



AMARI BANGKOK



Deluxe

847 Petchburi Road, Rajthevi Pratunam, Bangkok
MAP PAGE 12

From **\$249***

- ❖ Walk to shopping malls and bustling bazaars
- ❖ Multiple dining outlets including Italian restaurant Prego serving fresh pasta
- ❖ Premier rooms recently refurbished offering stunning modern touches

Includes full buffet breakfast daily.

Location: Set in the vibrant Pratunam district within walking distance to many shopping centres, outdoor markets, restaurants and attractions. Distances: Siam Paragon Mall 1.1km. Nearest BTS Skytrain station: Chit Lom or Ratchathewi.

Property Features: Pool (outdoor), Restaurants (4), Bars (2), 24 hour room service, Breeze Spa, FIT Centre, Squash courts, Shopping arcade, Laundry/dry cleaning services, 24 hour reception, 564 rooms.

Room Features: Air-conditioning, Tea/coffee making facilities, Mini bar, Cable TV, Ironing facilities, Hair dryer, Bathrobes, Safe.

Max Capacity: Deluxe/Grand Deluxe/Grand Deluxe Skyline – 3, Premier/Club Premier – 2.



BANYAN TREE BANGKOK



Horizon

21/100 South Sathon Road, Sathon, Bangkok
MAP PAGE 12

From **\$352***

- ❖ Home to the iconic, rooftop Vertigo and Moon Bar
 - ❖ Complimentary neck and shoulder massages available poolside
 - ❖ Club Room guests have exclusive use of the 19th floor Club lounge
- Includes full buffet breakfast daily.**

Location: An urban resort conveniently located in the Sathon/Silom area with easy access to MRT/BTS stations. Distances: Siam Paragon Mall 3.2km. Nearest BTS Skytrain station: Sala Daeng.

Property Features: Pool, Spa, Restaurants (5), Bars (3), Lounge, 24 hour room service, Day spa, Fitness centre, Resort shop, 24 hour reception, 327 rooms.

Room Features: Air-conditioning, Tea/coffee making facilities, Mini bar, Cable TV, Hair dryer, Bathrobes, Safe.

Max Capacity: Horizon/Oasis Retreat/Serenity Club/1 Bedroom Suite – 3, 2 Bedroom Suite – 5.



MONTIEN HOTEL SURAWONG BANGKOK



Deluxe

54 Surawongse Road, Bangkok
MAP PAGE 12

From **\$255***

- ❖ Hotel fully renovated in 2021 with spacious contemporary Thai style rooms
 - ❖ Hotel sits opposite infamous Patpong night market
 - ❖ All-day dining Ruenton is famous for its Hainanese chicken rice
- Includes buffet breakfast daily and welcome drink on arrival.**

Location: Set in a central Silom location across the road from Patpong market, restaurants, bars and shopping. Convenient to local transport with Samyan MRT just a few minutes' walk away. Distances: Siam Paragon Mall 2.1km. Nearest BTS Skytrain station: Sala Daeng.

Property Features: Pool, Restaurants (2), Bar, Coffee shop, 24 hour room service, Gym, Sauna, 24 hour reception, Laundry service, 475 rooms.

Room Features: Air-conditioning, Tea/coffee making facilities, Mini bar, Smart TV, Bluetooth speakers, USB charging ports, Hair dryer, Bathrobes, Safe.

Max Capacity: Deluxe/Premier/Junior Suite King – 3, Junior Suite Double Double – 5.



PATHUMWAN PRINCESS HOTEL



Deluxe Classic

444 Phayathai Road, Wangmai, Pathumwan, Bangkok
MAP PAGE 12

From **\$212***

- ❖ Bright, modern rooms with most boasting memorable skyline views
 - ❖ The Olympic Club, the biggest hotel fitness centre in Bangkok
 - ❖ Huge array of restaurants including a bakery
- Includes full buffet breakfast daily.**

Location: Set within MBK shopping centre and close to the Siam Centre. Distances: Siam Paragon Mall 800m. Nearest BTS Skytrain station: National Stadium.

Property Features: Pool and jacuzzi (outdoor), Restaurants (3), Bar, Lounge, Bakery, Room service, Café, Day spa, Fitness Centre, Tennis court, Jogging track, Squash courts (2), Badminton, Laundry/dry cleaning service, 24 hour reception, 445 rooms.

Room Features: Air-conditioning, Tea/coffee making facilities, Filtered water dispenser, Mini bar, Smart TV, In-room movies (extra charge), Hair dryer, Safe.

Max Capacity: Deluxe Classic/Grand Deluxe/Grand Deluxe Corner/ExecuPlus Suite – 3.





Big Buddha, Phuket

PHUKET

Phuket, the ‘Pearl of the Andaman’, is Thailand’s largest island, boasting white sandy beaches, crystal clear seas, limestone cliffs and world-renowned dive sites. The most popular beaches are situated along the azure waters of the western shore. Patong Beach is known for its shopping and nightlife, whereas Karon, Kata and Kamala beaches are perfect for families. Explore Old Phuket town to appreciate the unique Sino-Portuguese architecture, shrines, temples, shophouses, quaint cafés and museums.

SEE

- See the giant white Big Buddha sitting atop Nakkerd Hill close to Chalong Bay
- Head up to Karon View Point for amazing views over Kata Noi, Kata and Karon beaches

DO

- Travel via speedboat to Phang Nga Bay, to see James Bond Island and swim in the emerald waters
- Make your way to Phuket Town Night Markets for live music, local food stalls and shopping

EAT & DRINK

- Take a tour of Chalong Bay Rum Distillery, sample spirits and end with a refreshing mojito

WHAT'S ON

Songkran

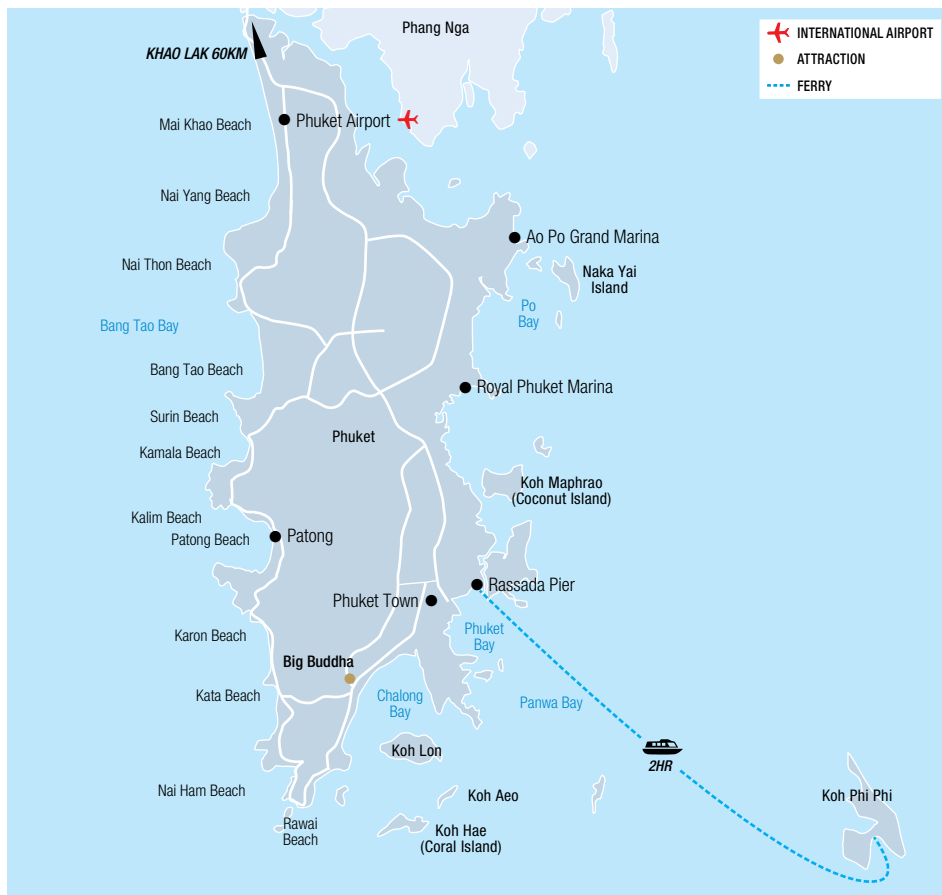
13 to 15 April

Laguna Phuket Marathon

8 to 9 June

Vegetarian Festival

15 to 23 October



Karon Beach



PRIVATE AIRPORT TRANSFERS

Get your holiday off to a great start with a door to door private transfer.

Convenient transfers are available from Phuket Airport to Phuket accommodation, 24 hours a day, 7 days a week. Sit back, relax and enjoy the passing scenery as you are transferred in air-conditioned comfort.

Travel distance from Phuket Airport to Bang Tao Beach is approximately 15 kilometres, Kamala Beach 23 kilometres, Patong Beach 30 kilometres and Karon Beach 40 kilometres. Travel time depends on time of day and traffic.

	1 to 2 People	3 to 6 People
Phuket Downtown	\$62* [^]	\$72* [^]

[^]Price based on per vehicle one way to/from Phuket Airport, without guide.



PHI PHI ISLAND TOUR BY SPEEDBOAT

Take a trip to the Phi Phi Islands, a must for anyone visiting Phuket. Hop onto a speedboat and escape to the stunning beauty of the region. Phi Phi Lagoon is known for its scenic limestone cliffs, coral reefs and great snorkelling. Enjoy a delicious buffet lunch before visiting Bamboo Island. Laze on the beach or swim over the large coral reefs.

Includes:

- Phi Phi Islands speedboat cruise
- Snorkelling equipment
- Lunch
- Return transfers from selected Phuket accommodation

Duration: 8 hours

Departs: Daily from Patong, Kata and Karon at 8am

	Adult	Child 3-11 yrs
Full Day Tour	\$168*	\$87*



PHANG NGA BY SPEEDBOAT & CANOE

Cruise out to Phang Nga Bay, passing by the limestone karst formations around Panak Island. Take a closer look in a canoe, to reach hidden lagoons. Learn about nearby Tapu Island where the James Bond movie was filmed. Visit the mangrove forest-shrouded fishing village of Koh Panyi. Grab lunch in the village and then travel to Koh Khai Nai for more snorkelling and swimming before heading back to the port.

Includes:

- Phang Nga Bay speedboat cruise
- James Bond Island • Canoe tour
- Lunch • Expert guide
- Return transfers from selected Phuket accommodation

Duration: 8 hours

Departs: Daily from Patong, Kata and Karon at 8am

Not suitable for children under 3 yrs.

	Adult	Child 3-11 yrs
Full Day Tour	\$168*	\$87*



ANDAMANDA WATERPARK

Enjoy a fun day out at Phuket's newest and largest leisure and entertainment destination. The park has 5 themed zones, 25 attractions, 12 extreme water slides, 3 kids water slides, 3 relax attractions and 3 must see attractions.

Includes:

- Admission ticket
- Return transfers from selected Phuket accommodation

Duration: 6 hours

Departs: Daily from Patong, Kata, Karon, Kamala, Bang Tao and Laguna at 10am or 1pm

	Adult	Child 3-11 yrs
Admission	\$92*	\$68* [^]

[^]Children price based on 90-120 cm height.



SIMON CABARET SHOW

Get set for a glamorous evening of entertainment at the Simon Cabaret Show. From the moment you enter the stylish and luxurious theatre, you realise that this is going to be a night to remember. The majority of the stars of the show were born male but are living life as gorgeous women who express their talents as Cabaret performers. The show takes you on a journey through many countries. Sit back and enjoy the elaborate stage performers dressed in flamboyant, glittering costumes. It's a spectacular display of colour, originality and humour.

Includes:

- Admission to show
- Transport by air-conditioned vehicle

Duration: 2 hours 30 minutes

Commences: Daily at 6pm

	Adult/Child 3-11 yrs
Cabaret Show	\$60* [^]

[^]Price based on regular seat.



PHUKET MINIVAN RENTAL WITH DRIVER & GUIDE

Make the most of your time in Phuket and rent a private air-conditioned vehicle with an experienced guide.

Enjoy the flexibility of seeing the island according to your own interests. Choose from multiple attractions and activities, take in the views from lookout points, or visit the beaches in Kata, Karon and Patong. See the marble Big Buddha statue and visit the Wat Chalong pagoda temple. Use the time to see the Chinese and Portuguese architecture of the historic city centre and learn the history behind the elegant façades.

Includes:

- Transport by air-conditioned vehicle • Expert guide

Duration: 4 or 8 hours

Departs: Daily from Phuket, on demand

Prices also available for 2 and 4 people.

	8 People
4 Hours	\$201* [^]
8 Hours	\$272* [^]

[^]Price based on per vehicle.

ELEPHANT HILLS

Welcome to Elephant Hills, Thailand's first unique luxury camp located in Khao Sok National Park. Whether you are looking for a nature escape on your honeymoon or travelling with the family, you'll find a truly one-of-a-kind experience upon entering the gates. Comprising of two tented camps – the Elephant Camp and the floating Lake Camp, you will be at one with nature in a luxury setting. The floating Lake Camp is exclusive to Elephant Hills. This is one of the most unique and responsible ways to admire Asia's largest land mammals.

TRANSFERS

Elephant Hills is located in Khao Sok National Park and is a three hour drive from Phuket. Scheduled transfers depart Phuket hotels between 7am and 9am and from Phuket Airport at 9am. Transfers are also available from Krabi, Khao Lak, Koh Samui and Surat Thani.

Ask your travel agent for prices and further details.



Elephant Camp

JUNGLE SAFARI TOUR

2 NIGHTS

Travel to Elephant Hills Camp in Khao Sok National Park for a three day adventure. Elephant Hills is an ethical elephant sanctuary that allows an up-close experience with these gentle giants. Assist with food preparation and feeding and watch as the elephants take a mud bath. Stay in a luxurious tent for an experience that you will never forget.

INCLUDES

- 2 nights tented accommodation with private facilities at The Elephant Camp
- 2 breakfasts, 3 lunches, 2 dinners
- Elephant experience
- Sok River canoe safari
- Jungle trek
- Expert guide
- Return scheduled transfers from Phuket accommodation

TRAVEL TYPE Independent

DEPARTS Daily from Phuket at 7am



From **\$875*** per person twin share

Children's prices on application. Children 4 to 15 yrs stay and eat free when travelling with 2 adults for the months of May, Jun, Sep. Not suitable for children under 4 yrs. 1 Night Jungle Safari Tour and 3 Night Nature Safari Tour also available. Ask your travel agent for details.



Lake Camp

JUNGLE & LAKE CAMP SAFARI TOUR

2 NIGHTS

Assist with food preparation and feeding Asia's largest land animals at Elephant Hills. Experience it in an almost untouched environment. Spend your first night at the Elephant Camp and learn about and oversee the daily activities of these majestic animals. Spend the second night at the floating Lake Camp where you can sit on the front porch of your tent and enjoy the view or take a canoe trip on Chew Larn Lake.

INCLUDES

- 1 night tented accommodation with private facilities at The Elephant Camp
- 1 night tented accommodation with private facilities at The Lake Camp
- 2 breakfasts, 3 lunches, 2 dinners
- Elephant experience • Sok River canoe safari
- Chew Larn Lake longtail boat ride
- Expert guide • Jungle trek
- Return scheduled transfers from Phuket accommodation

TRAVEL TYPE Independent

DEPARTS Daily from Phuket at 7am



From **\$1026*** per person twin share

Children's price on application. Children 4 to 15 yrs stay and eat free when travelling with 2 adults for the months of May, Jun, Sep. Not suitable for children under 7 yrs. All guests are required to be able to swim.

* FROM PRICES ARE A GUIDE ONLY, subject to change and availability and are in Australian Dollars. Prices are per person twin share, unless otherwise specified and based on the lowest room category and travel in low season. For full terms and conditions, refer to the Booking Conditions on the inside back cover of this brochure.



Patong Beach

PATONG BEACH

Patong is Phuket's most popular beach area, famous for amazing bargain shopping, entertainment and vibrant nightlife. The star attraction of Patong is the beach. This sandy shoreline is easily accessible and sits on a bay stretching for over three kilometres. Here you can find an array of water based activities such as windsurfing and banana boat rides or simply lay a towel down and bask in the sun.

As the sun sets in the evening, head to Bangla Road. This 600 metre stretch of road, and its offshoots, is the beating heart of Patong nightlife with clubs, restaurants and bars. Head to the busy night markets or Jungceylon, Phuket's largest shopping mall, for some retail therapy.



Patong Beach



Patong Beach

REF.	HOTELS	PAGE
1	Amari Phuket	23
2	Andaman Beach Suites Hotel	19
3	Burasari Resort	20
4	Courtyard By Marriott Phuket, Patong Beach Resort	21
5	Diamond Cliff Resort and Spa	23
6	Grand Mercure Phuket Patong	23
7	Holiday Inn Resort Phuket	20
8	The Kee Resort & Spa	22
9	Phuket Graceland Resort and Spa	22

ANDAMAN BEACH SUITES HOTEL



Superior City View



60/12 Rat-U-thit Song Roi Pee Road, Patong Beach, Phuket
MAP PAGE 19

From **\$222***

- ❖ Spacious rooms offer either mountain or sea views
 - ❖ One of a few high rise buildings located near Patong Beach
 - ❖ 10 minutes' walk to Bangla Road and Jungceylon Shopping Centre
- Includes full buffet breakfast daily.**

Location: Close to Patong Beach and 25 minutes from Phuket Town. Distances: Phuket International Airport 45km, Beach 150m.

Property Features: Pools (3 – including children's), Sky Lounge, Restaurant, Bars (3), Room service, Fitness centre, Tennis court, Games room, Laundry service, 24 hour reception, 142 rooms.

Room Features: Air-conditioning, Balcony or terrace, Tea/coffee making facilities, Mini bar, Cable TV, Smart TV (2 Bedroom Family Suites), Hair dryer.

Max Capacity: Superior City View/Superior Sea View/Deluxe Sea View – 3, Super Deluxe Sea View – 4, 2 Bedroom Family Suite/2 Bedroom Premium Family – 6.



*FROM PRICES ARE A GUIDE ONLY, subject to change and availability and are in Australian Dollars. Prices are per room per night for 2 people, unless otherwise specified and based on the lowest room category for travel in low season. For full terms and conditions, refer to the Booking Conditions on the inside back cover of this brochure.

PATONG BEACH ACCOMMODATION

BURASARI RESORT



Premier



Elite Pool Access

18/110 Ruamjai Road, Patong, Amphur Kathu, Phuket
MAP PAGE 19

From **\$214***

- ❖ Rooms feature cheerful textiles and local artwork
- ❖ Walking distance to Patong's markets and cafés
- ❖ Pool bar offers games, billiards, sports TV and a library

Includes full buffet breakfast daily, free mini bar replenished once daily.

Location: A garden retreat in the middle of Patong's vibrant beach scene and nightlife. Distances: Phuket International Airport 37km, Beach 50m.

Property Features: Pools (2), Restaurant, Bars (2), Juice bar, Room service, Spa at Burasari (day spa), Laundry/dry cleaning service, 24 hour reception, 182 rooms.

Room Features: Air-conditioning, Balcony or terrace, Tea/coffee making facilities, Mini bar (free), Cable TV, Hair dryer, Bathrobes, Safe.

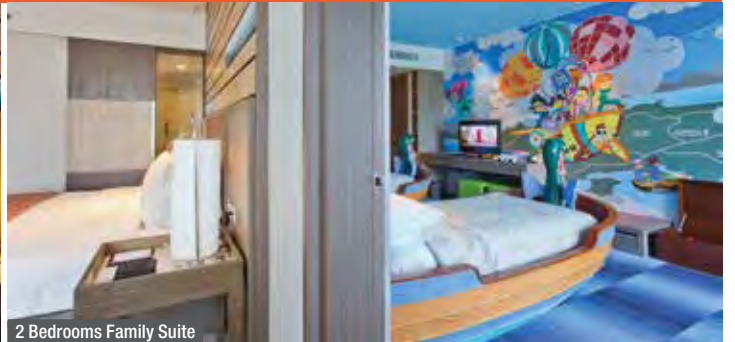
Max Capacity: Premier/Premier Pool View – 2, Elite/Mood Collection/Honeymoon Collection/Elite Pool Access – 3.



HOLIDAY INN RESORT PHUKET



Standard



2 Bedrooms Family Suite

52 Thaweewong Road, Patong Beach, Phuket
MAP PAGE 19

From **\$222***

- ❖ Walking distance to Patong entertainment precinct
- ❖ Families will love the colourful rooms in the Main Wing
- ❖ Choose a stylish Busakorn Premium Room for pool views

Includes full buffet breakfast daily.

Location: Across the road from Patong Beach. Distances: Phuket International Airport 45km, Beach 100m.

Property Features: Pools (6 – Busakorn pool for exclusive use of Busakorn guests), Restaurants (4), Bar, Room service, Kids club 5-12 years (free), 24 hour fitness centre, 398 rooms.

Room Features: Air-conditioning, Balcony or terrace, Tea/coffee making facilities, Cable TV, Hair dryer, Safe.

Max Capacity: Standard/Family Room/2 Bedrooms Family Suite – 2 adults/2 children, Premium Villa Pool View – 2, Premium Pool View Balcony – 2 adults/1 child.



* FROM PRICES ARE A GUIDE ONLY, subject to change and availability and are in Australian Dollars. Prices are per room per night for 2 people, unless otherwise specified and based on the lowest room category for travel in low season. For full terms and conditions, refer to the Booking Conditions on the inside back cover of this brochure.

COURTYARD BY MARRIOTT PHUKET, PATONG BEACH RESORT (FORMERLY PATONG MERLIN HOTEL) ◆◆◆◆



Artist's Impression



Artist's Impression



Artist's Impression

44 Thaweewong Road, Patong, Phuket
MAP PAGE 19

From **\$217***

- ◆ Formerly the popular Patong Merlin Hotel, resort reopened in December 2023 after a major transformation with modern new rooms and facilities
- ◆ Easy access to nightlife, entertainment, restaurants, and markets
- ◆ Conveniently located across the road from Patong Beach
- ◆ Kids will love the pools with slides, play structures and water fountain
- ◆ Savour delectable delights and international specialities in the five onsite restaurants

Includes full buffet breakfast daily.

Location: Set amongst 8 acres of palm trees and tropical garden, just across the road from Patong Beach. Distances: Phuket International Airport 40km, Beach 100m.

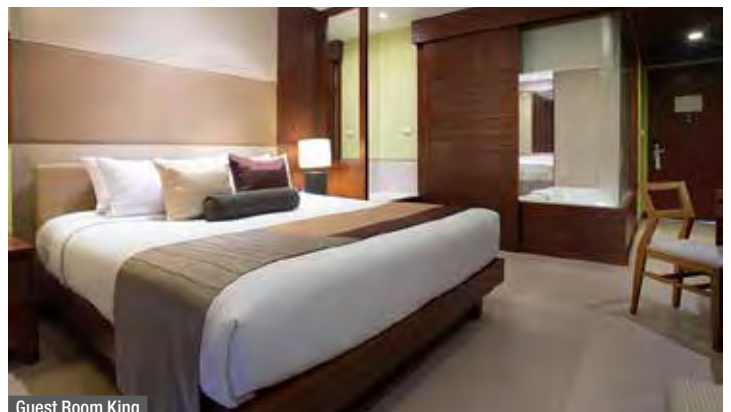
Property Features: Pools (5), Restaurants (5), Bars (4 – including 2 swim-up), 24 hour room service, Kids club 6-12 years (free), Resort shop, Laundry/dry cleaning service, 24 hour reception, 448 rooms.

Room Features: Air-conditioning, Balcony or terrace, Tea/coffee making facilities, Mini fridge, Cable TV, Hair dryer, Safe.

Max Capacity: Guest Room Twin – 2 adults/1 child, Guest Room King – 3.



Guest Room Twin



Guest Room King



*FROM PRICES ARE A GUIDE ONLY, subject to change and availability and are in Australian Dollars. Prices are per room per night for 2 people, unless otherwise specified and based on the lowest room category for travel in low season. For full terms and conditions, refer to the Booking Conditions on the inside back cover of this brochure.

PATONG BEACH ACCOMMODATION

THE KEE RESORT & SPA



Plaza

152/1 Thaweewong Road, Patong, Kathu, Phuket
MAP PAGE 19

From **\$185***

- ◆ Connected to the Kee Plaza which offers many dining and shopping options
- ◆ Modern rooms with excellent amenities
- ◆ The Kee Sky Lounge rooftop bar offers sunset views

Includes full buffet breakfast daily, welcome drink upon arrival.

Location: Just a mere 150 metre walk away from lively Bangla Road. Distances: Phuket International Airport 45km, Beach 200m.

Property Features: Pool, Restaurants (2), Bars (2), Coffee shop, 24 hour room service, Day spa, Gym, Activities centre, Laundry/dry cleaning service, 24 hour reception, 255 rooms.

Room Features: Air-conditioning, Balcony or terrace, Tea/coffee making facilities, Cable TV, In-room movies (pay to view), Hair dryer, Bathrobes, Safe.

Max Capacity: Plaza/Deluxe/Deluxe Pool View/Deluxe Pool Access/Sea View Suite – 3, Deluxe Jacuzzi – 2.



Kee Sky Lounge



PHUKET GRACELAND RESORT AND SPA



Deluxe

190 Thaweewong Road, Patong, Phuket
MAP PAGE 19

From **\$233***

- ◆ Four sea view swimming pools featuring kids pools, jacuzzis and pool bars
- ◆ Walking distance to shops, beach, restaurants and Bangla Road
- ◆ Sunset Beer Café is perfect for evening drinks and live music

Includes full buffet breakfast daily.

Location: Across the road from Patong Beach, overlooking the Andaman Sea. Distances: Phuket International Airport 34km, Beach 100m.

Property Features: Pools (4), Restaurants (5), Bars (3), 24 hour room service, Kids club 6-12 years (extra charge), Day spa, Gym, Bowling alley, Pool tables, Beauty salon, Laundry/dry cleaning service, Resort shop, 24 hour reception, 600 rooms.

Room Features: Air-conditioning, Balcony or terrace, Tea/coffee making facilities, Mini fridge, Cable TV, Ironing facilities, Hair dryer, Safe.

Max Capacity: Deluxe/Deluxe Pool View/Deluxe Pool Access/Sunset Deluxe Pool View/Sunset Deluxe Pool Access – 4, Family/Family Pool View/Family Pool Access/Sunset Grand Deluxe – 5, Family Suite 2 Bedroom – 6. Other room types also available.



*FROM PRICES ARE A GUIDE ONLY, subject to change and availability and are in Australian Dollars. Prices are per room per night for 2 people, unless otherwise specified and based on the lowest room category for travel in low season. For full terms and conditions, refer to the Booking Conditions on the inside back cover of this brochure.

PATONG BEACH ACCOMMODATION

DIAMOND CLIFF RESORT AND SPA



Super Deluxe

284 Prabaramee Road, Patong, Phuket
MAP PAGE 19

From **\$136***

- ❖ Rooms have private balconies offering garden, pool or ocean views
- ❖ Diamond Spa makes this resort ideal for honeymooners
- ❖ Complimentary shuttle bus twice a day to Patong Beach

Includes full buffet breakfast daily, welcome drink and cold towel on arrival, 1kg of fruit once per stay from hotel fruit shop.

Location: Nestled in the hills of Patong and overlooks the Andaman Sea. Distances: Phuket International Airport 30km, Beach 300m.

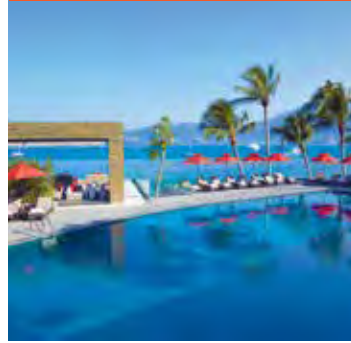
Property Features: Pools (2), Restaurants (3), Bars (3 – 2 swim-up), 24 hour room service, Kids club 6-11 years (extra charge), Child minding (extra charge), Day spa, Gym, Tennis court, 24 hour reception, 312 rooms.

Room Features: Air-conditioning, Balcony or terrace, Tea/coffee making facilities, Mini bar, Cable TV, Hair dryer, Bathrobes, Safe.

Max Capacity: Super Deluxe/1 Bedroom Pool Villa – 3, Diamond Suite/Diamond Jacuzzi Suite/Grand Jacuzzi Suite – 3 adults or 2 adults/2 children, Ocean Jacuzzi Suite/Romantic Suite – 2, 2 Bedroom Pool Villa – 6.



AMARI PHUKET



Superior Balcony

2 Meun-Ngern Road, Patong Beach, Kathu, Phuket
MAP PAGE 19

From **\$282***

- ❖ Modern rooms and suites with Thai decor, offering ocean views
- ❖ 10 minute walk to Patong Beach
- ❖ Coral Lounge Suites include all-day drinks and snacks

Includes full buffet breakfast daily.

Location: On a secluded private beach, with panoramic views over Patong Bay. Distances: Phuket International Airport 38km, Beach 1km.

Property Features: Pools (3), Restaurants (2), Bars (3), 24 hour room service, Kids club 4-12 years (free), Day spa, Fitness centre, Tennis court, Dive shop, 24 hour reception, 380 rooms.

Room Features: Air-conditioning, Balcony or terrace, Tea/coffee making facilities, Mini bar, Kitchen (Ocean Wing Suites), Cable TV, Hair dryer, Safe.

Max Capacity: Superior Balcony/Superior Ocean Front Balcony/Deluxe Ocean Front Balcony – 3 adults or 2 adults/2 children, One Bedroom Suite Ocean Coral Lounge/One Bedroom Suite Ocean View Coral Lounge – 3, Two Bedroom Suite Coral Lounge – 4.



GRAND MERCURE PHUKET PATONG



Superior

1 Soi Rat-U-Thit 200 Pi 2, Patong, Kathu, Phuket
MAP PAGE 19

From **\$201***

- ❖ Rooms, suites and villas are beautifully appointed with modern amenities
- ❖ Only property in central Patong with pool villas
- ❖ Large pool with swim-up bar and craft beer lounge

Includes full buffet breakfast daily.

Location: A serene hideaway tucked behind Phuket's Andaman seafront, with easy access to nightlife, beach, shopping centres and eateries just minutes walk away. Distances: Phuket International Airport 35km, Beach 500m.

Property Features: Pools (2 – including children's), Restaurant, Café, Bars (2), 24 hour room service, Kids club 4-12 years (free), Day spa, Fitness centre, Steam room, Laundry/dry cleaning service, 24 hour reception, 314 rooms.

Room Features: Air-conditioning, Balcony, Tea/coffee making facilities, Coffee pod machine, Mini bar, Cable TV, DVD player, Docking station, Hair dryer, Safe.

Max Capacity: Superior – 3, Deluxe Pool Access – 2, Superior Suite/1 Bedroom Pool Villa – 3 adults/1 child, 2 Bedroom Pool Villa – 6.



KARON & KATA BEACHES

Located south of Patong, Karon and Kata beaches charm visitors and holidaymakers with their palm-fringed, white sand beaches and crystal clear waters. For those seeking a quiet getaway with uncrowded beaches, relaxed shopping and good restaurants, Karon and Kata beaches are ideal. Visit Wat Karon, a beautiful Buddhist temple and home to a twice weekly market. If surfing and snorkelling is more your thing, head to Kata for the perfect wave and picturesque underwater coral formations.



Kata Noi Beach



Kata Beach



REF.	VILLAS	PAGE
1	Centara Villas Phuket	25
2	The Shore at Katathani	29

REF.	HOTELS	PAGE
3	Beyond Resort Karon	24
4	Beyond Resort Kata	24
5	Centara Grand Beach Resort Phuket	28
6	Centara Kata Resort Phuket	25
7	Holiday Inn Resort Phuket Karon Beach	26
8	Katathani Phuket Beach Resort	27
9	The Old Phuket	26

BEYOND RESORT KARON

51 Karon Road, Karon, Phuket
MAP PAGE 24

From **\$258***

- ❖ Adults only resort
 - ❖ Spacious rooms offer panoramic ocean views
 - ❖ Two restaurants and a swim-up bar
- Includes full buffet breakfast daily.**

Location: In a quiet corner of Karon Beach and within walking distance of shops and restaurants. Distances: Phuket International Airport 47km, Beachfront.
Property Features: Pool, Spa, Restaurants (2), Swim-up bar, Room service, Laundry/dry cleaning service, 24 hour reception, Shuttle service, 81 rooms.
Room Features: Air-conditioning, Balcony or terrace, Tea/coffee making facilities, Cable TV, Hair dryer, Safe.
Max Capacity: Deluxe Pool/Deluxe Seaview/Deluxe Premier – 2.

BEYOND RESORT KATA

1 Pakbang Road, Tambon Karon, Phuket
MAP PAGE 24

From **\$220***

- ❖ Enjoy incredible sunset views across the Andaman Ocean
 - ❖ Daily children's activity programs
 - ❖ Reopened in late 2023 after a full refurbishment of rooms and facilities
- Includes full buffet breakfast daily.**

Location: An absolute beachfront resort set on the golden sands of Kata Beach. Distances: Phuket International Airport 46km, Beachfront.
Property Features: Pool (including children's), Restaurants (2), Bars (2), Room service, Coffee shop, Kids club 2-12 years (free), Day spa, Gym, Laundry/dry cleaning service, 275 rooms.
Room Features: Air-conditioning, Balcony or terrace, Tea/coffee making facilities, Mini bar, Cable TV, Hair dryer.
Max Capacity: Superior/Deluxe/Deluxe Premier Seaview/Deluxe Poolview/Junior Suite Seaview/Seaview Suite – 3, Pool Access – 2.



* FROM PRICES ARE A GUIDE ONLY, subject to change and availability and are in Australian Dollars. Prices are per room per night for 2 people, unless otherwise specified and based on the lowest room category for travel in low season. For full terms and conditions, refer to the Booking Conditions on the inside back cover of this brochure.

CENTARA KATA RESORT PHUKET



Deluxe Garden

54 Ked-Kwan Road, Kata Beach, Phuket
MAP PAGE 24

From **\$114***

- ❖ Suites are equipped with limited cooking facilities
- ❖ Main swimming pool offers a waterslide, spa and swim-up pool bar
- ❖ All rooms have a private balcony or terrace with pool or garden views

Includes full buffet breakfast daily.

Location: In the heart of Kata Village close to restaurants, shops and entertainment. Distances: Phuket International Airport 45km, Beach 600m.

Property Features: Pools (3), Restaurant, Bars (2), Room service, E-Zone Kids Club 4-11 years (free), Day spa, Gym, Volleyball, Laundry/dry cleaning service, 24 hour reception, 163 rooms.

Room Features: Air-conditioning, Balcony or terrace, Tea/coffee making facilities, Limited cooking facilities (Suites only), Mini bar, Cable TV, Hair dryer, Safe.

Max Capacity: Deluxe Garden/Deluxe Pool Access – 3, Family Garden View/Family Pool Access – 4, 1 Bedroom Premium Suite Garden – 3 adults or 3 adults/2 children.



CENTARA VILLAS PHUKET



Deluxe Garden Villa

701 Patak Road, Tambol Karon, Phuket
MAP PAGE 24

From **\$147***

- ❖ Private, ocean-facing Thai-style villas offering stunning views
- ❖ Unique, tropical oasis – perfect for honeymooners or couples
- ❖ Restaurant and bar perched on a cliff offering incredible views

Includes full buffet breakfast daily.

Location: Set on top of a hill, with sweeping views across the bay and Karon Beach. Distances: Phuket International Airport 50km, Beach 500m.

Property Features: Thai cooking classes (extra charge), Pool, Restaurants (2), Bar, 24 hour room service, Day spa, Games area, Laundry/dry cleaning service, Shuttle service to Karon and Patong, 72 villas.

Room Features: Air-conditioning, Plunge Pool (Deluxe Private Pool Villa), Balcony or terrace, Tea/coffee making facilities, Mini bar, Cable TV, Hair dryer, Safe, Pillow menu.

Max Capacity: Deluxe Garden Villa/Deluxe Ocean Villa/Deluxe Spa Villa/Deluxe Private Pool Villa – 3.



Deluxe Private Pool Villa



KARON & KATA BEACHES ACCOMMODATION

HOLIDAY INN RESORT PHUKET KARON BEACH



Standard

568 Patak Road, Karon, Phuket
MAP PAGE 24

From **\$195***

- ❖ Relaxed family friendly resort with waterslide and kids pool
- ❖ Joe Kool's Poolside Grill offers alfresco dining
- ❖ Kids will love the specially designed activities program

Includes full buffet breakfast daily.

Location: Set across the road from Karon Beach and just a 10 minute drive away from Patong. Distances: Phuket International Airport 45km, Beach 100m.

Property Features: Pools (3 – including children's), Waterslide, Restaurants (3), Bars (2), 24 hour room service, Kids club, 24 hour gym, Day spa, Laundry/dry cleaning service, 24 hour reception, 224 rooms.

Room Features: Air-conditioning, Balcony or terrace, Tea/coffee making facilities, Mini bar (stocked on request), Cable TV, Ironing facilities, Hair dryer, Safe.

Max Capacity: Standard/Superior/Deluxe/Paradise Suite – 3, Family Fun Junior Suite – 2 adults/2 children.



THE OLD PHUKET



Sino Deluxe

192/36 Karon Road, Karon Beach, Muang, Phuket
MAP PAGE 24

From **\$160***

- ❖ Combines heritage with modern architecture and furnishings
- ❖ All rooms have private balconies with either sea, mountain or pool views
- ❖ Large array of activities available including poolside massages

Includes full buffet breakfast daily.

Location: In the centre of Karon, and a short walk to the beach, shops, restaurant and bars. Distances: Phuket International Airport 45km, Beach 200m.

Property Features: Pools (2 – including children's), Restaurants (2), Bars (2), Room service, Kids club 4-12 years (free), Gym, Massage facilities, Yoga class (free), Laundry/dry cleaning service, 24 hour reception, 184 rooms.

Room Features: Air-conditioning, Balcony or terrace, Tea/coffee making facilities, Mini bar, Cable TV, Hair dryer, Safe.

Max Capacity: Sino Deluxe/Deluxe Pool View/Deluxe Pool Access – 3, Terrace Deluxe/Private Jacuzzi – 2 adults/1 child, Deluxe Family – 2 adults/3 children.



Deluxe Pool Access



* FROM PRICES ARE A GUIDE ONLY, subject to change and availability and are in Australian Dollars. Prices are per room per night for 2 people, unless otherwise specified and based on the lowest room category for travel in low season. For full terms and conditions, refer to the Booking Conditions on the inside back cover of this brochure.

KATATHANI PHUKET BEACH RESORT



14 Kata Noi Road, Kata Noi Beach, Phuket
MAP PAGE 24

From **\$298***

- ❖ 850 metres of unspoilt, white sandy beach
- ❖ Family friendly resort offering a kids club and aqua play zone
- ❖ Spacious rooms with Thai-style furnishings and wooden floors
- ❖ Pool access rooms located in Bhuri wing are perfect for couples
- ❖ Spoilt for choice with 6 restaurants – from Thai to Seafood to Italian

Includes full buffet breakfast daily.

Location: Set on the southwest coast of Phuket Island, in secluded Kata Noi Bay. Distances: Phuket International Airport 48km, Beachfront.

Property Features: Thai cooking classes (extra charge), Pools (6 – including children's with mini waterslide), Aqua Play Zone, Spa, Restaurants (6), Bars (6), 24 hour room service, Kids club 4-12 years (free), Day spa, Fitness centre, Sauna, Putting green, Laundry/dry cleaning service, Resort shop, 24 hour reception, 518 rooms.

Room Features: Air-conditioning, Balcony or terrace, Tea/coffee making facilities, Mini fridge, Cable TV, DVD player, Hair dryer, Bathrobes, Safe.

Max Capacity: Deluxe/Pool Access/1 Bedroom Royal Thani Suite – 2 adults/1 child, Grand Deluxe/Two Bedroom Royal Thani Suite – 2 adults/2 children, Grand Suite/Junior Suite/Junior Suite Ocean Front – 3 adults or 2 adults/2 children, Family Suite – 4 adults/2 children, Grand Deluxe Interconnecting – 4 adults/4 children.



Pool Access



Deluxe



*FROM PRICES ARE A GUIDE ONLY, subject to change and availability and are in Australian Dollars. Prices are per room per night for 2 people, unless otherwise specified and based on the lowest room category for travel in low season. For full terms and conditions, refer to the Booking Conditions on the inside back cover of this brochure.

KARON & KATA BEACHES ACCOMMODATION

CENTARA GRAND BEACH RESORT PHUKET



Patak Road, Karon Beach, Phuket
MAP PAGE 24

From **\$509***

- ❖ Features a water park with lazy river ride and waterslides
- ❖ Spacious rooms, suites and villas which all face the beach and Andaman Sea
- ❖ Prime location on Karon's white sandy beach
- ❖ Huge array of eating and drinking options to suit all tastes
- ❖ COAST Beach Club & Bistro is a great spot to unwind in the evening with cool tunes and innovative cocktails

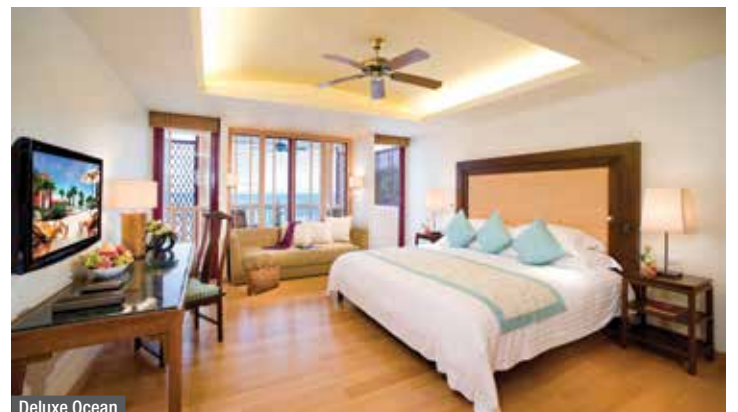
Includes full buffet breakfast daily.

Location: On the northern end of Karon Beach with scheduled shuttle services to Karon and Patong beaches. Distances: Phuket International Airport 44km, Beachfront.

Property Features: Pools (4 – including children's), Water park with waterslides and lazy river, Restaurants (3), Bars (4), 24 hour room service, Kids club 4-11 years (free), Children's playground, Day spa, Gym, Tennis court, Laundry service, 262 rooms.

Room Features: Air-conditioning, Balcony or terrace, Tea/coffee making facilities, Mini bar, Cable TV, Hair dryer, Safe.

Max Capacity: Deluxe/Deluxe Ocean/Premier Spa/Premier Suite Private Pool – 3 adults or 2 adults/2 children, Deluxe Spa/Premium Deluxe/Deluxe Spa Ocean View – 2, Villa 1 Bedroom Private Pool – 3 adults or 2 adults/3 children, Villa 2 Bedroom Private Pool – 5 adults or 4 adults/3 children.



Deluxe Ocean



* FROM PRICES ARE A GUIDE ONLY, subject to change and availability and are in Australian Dollars. Prices are per room per night for 2 people, unless otherwise specified and based on the lowest room category for travel in low season. For full terms and conditions, refer to the Booking Conditions on the inside back cover of this brochure.

THE SHORE AT KATATHANI



Seaview Pool Villa In Love



14 Kata Noi Road, Karon, Phuket
MAP PAGE 24

From **\$823***

- ❖ An intimate collection of private pool villa hideaways
- ❖ Situated on stunning Kata Noi Beach
- ❖ Most villas offer panoramic ocean views
- ❖ Soothe mind, body and soul in Serenity Spa
- ❖ Enjoy a menu of classic dishes and inventive international cuisine
- ❖ Perfect for a honeymoon or romantic getaway

Includes full buffet breakfast daily.

Location: On the far end of Kata Noi Beach, just south of Patong Beach. Distances: Phuket International Airport 49km, Beachfront.

Property Features: Pool (beachfront infinity edge), Restaurants (2), Bar, 24 hour room service, Day spa, Gym, Library, Resort shop, Laundry/dry cleaning service, 98 rooms.

Room Features: Private plunge pool and sundeck, Air-conditioning, Coffee pod machine, Tea/coffee making facilities, Mini bar, Cable TV, Docking station, USB ports and universal plugs, Hair dryer, Bathrobes, Safe.

Max Capacity: Pool Villa/Seaview Pool Villa/Seaview Pool Villa In Love/Seaview Pool Villa Romance – 2, 2 Bedroom Pool – 4.



Seaview Pool Villa



Seaview Pool Villa



Pool Villa



*FROM PRICES ARE A GUIDE ONLY, subject to change and availability and are in Australian Dollars. Prices are per room per night for 2 people, unless otherwise specified and based on the lowest room category for travel in low season. For full terms and conditions, refer to the Booking Conditions on the inside back cover of this brochure.

KAMALA & BANG TAO BEACHES

Located north of Patong, you'll find the coastal villages of Kamala and Bang Tao. The palm-fringed beaches of Bang Tao and Kamala cater to couples and families seeking a quieter and more relaxed atmosphere. Picturesque Kamala beach offers a range of watersports and outdoor activities such as jet-skiing and parasailing, while Bang Tao is home to Asia's first integrated destination resort – Laguna, which sits on a three kilometre stretch of pristine beach.



Kamala Beach



Bang Tao



Kamala Beach

REF.	VILLAS	PAGE
1	Banyan Tree Phuket	31

REF.	HOTELS	PAGE
2	Angsana Laguna Phuket	31
3	Sunprime Kamala Beach	30
4	Sunwing Kamala Beach	31

SUNPRIME KAMALA BEACH



Deluxe Ground Terrace

96/42-3 Moo 3, Kamala Beach, Kathu, Phuket
MAP PAGE 30

From **\$133***

- ❖ Adults only resort
 - ❖ Spacious rooms are well-appointed with private balconies
 - ❖ Four pools and two swim-up bars
- Includes full buffet breakfast daily.**

Location: Situated beachfront, just a 10 minute walk to Kamala village and only a 15 minute drive by car to Patong. Distances: Phuket International Airport 30km, Beachfront.
Property Features: Pools (4), Restaurants (2), Bars (4), 24 hour room service, Gym, 24 hour reception, Convenience store, Shuttle bus to Patong (extra charge), 353 rooms.
Room Features: Air-conditioning, Balcony or terrace, Tea/coffee making facilities, Ironing facilities, Hair dryer, Safe.
Max Capacity: Deluxe Ground Terrace/Deluxe/Grand Deluxe/Grand Deluxe Pool View/Junior Suite – 3.



* FROM PRICES ARE A GUIDE ONLY, subject to change and availability and are in Australian Dollars. Prices are per room per night for 2 people, unless otherwise specified and based on the lowest room category for travel in low season. For full terms and conditions, refer to the Booking Conditions on the inside back cover of this brochure.

KAMALA & BANG TAO BEACHES ACCOMMODATION

SUNWING KAMALA BEACH



Studio

96/66 Moo 3, Kamala Beach, Kathu, Phuket
MAP PAGE 30

From **\$171***

- ❖ Rooms are generous in size with a wide range of amenities
- ❖ Daily activities for children and nightly entertainment for the whole family
- ❖ Eight pools including waterslides for kids and adults

Includes full buffet breakfast daily.

Location: Set on the white sandy beach of Kamala Bay, and less than a kilometre from restaurants and shopping. Distances: Phuket International Airport 30km, Beachfront.

Property Features: Pools (8), Restaurants (2), Bars (3), 24 hour room service, Kids club 3-15 years (free), Gym, Convenience store, Guest laundry, 24 hour reception, 317 rooms.

Room Features: Air-conditioning, Balcony or terrace, Limited cooking facilities with microwave, Cable TV, Refrigerator, Hair dryer, Safe.

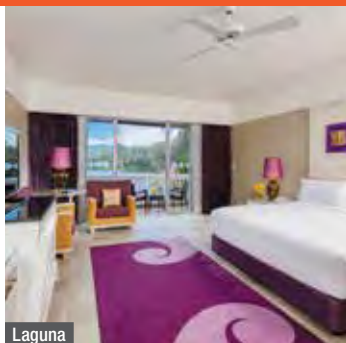
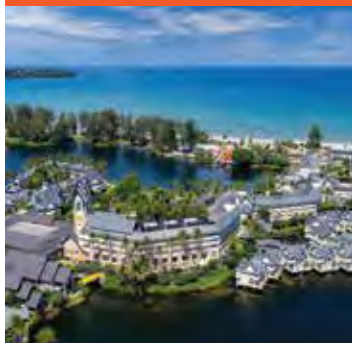
Max Capacity: Studio/Happy Baby Studio/Royal Studio Pool Access/Lollo and Bernie Suite – 3 adults or 2 adults/2 children, Family Suite – 5 adults or 4 adults/2 children.



Lollo and Bernie Suite



ANGSANA LAGUNA PHUKET



Laguna

10 Moo 4, Srisoonthorn Road, Thalang, Phuket
MAP PAGE 30

From **\$217***

- ❖ Modern rooms and suites with picturesque views – sea, pool, or garden
- ❖ Diverse cuisine at eight outlets such as Thai, Italian, Mediterranean and more
- ❖ 101 activities including sailing, SUP, kayaking and bike tours

Includes full buffet breakfast daily.

Location: Set on a natural lagoon on the shores of Bang Tao Beach, an 8km stretch of beach in the island's northwest. Distances: Phuket International Airport 18km, Beachfront.

Property Features: Pools (2), Restaurants and bars (8), 24 hour room service, Kids club 4-12 years (free), Angsana Spa, Fitness Centre, Laundry/dry cleaning service, 24 hour reception, 380 rooms.

Room Features: Air-conditioning, Balcony or terrace, Tea/coffee making facilities, Mini bar, Cable TV, Ironing facilities, Hair dryer, Bathrobes, Safe.

Max Capacity: Laguna/Laguna Grand/Laguna Poolside/Angsana One Bedroom Loft – 3, Laguna Premier – 3 or 2 adults/2 children, Two Bedroom Island Suite/Two Bedroom Island Duplex – 5.



BANYAN TREE PHUKET



Serenity Pool Villa



Two Bedroom DoublePool Villa

Srisoonthorn Road, Amphur, Thalang, Phuket
MAP PAGE 30

From **\$661***

- ❖ Villas have beautiful, tropical furnishings and a private pool
- ❖ Rangers Club offers a wide range of activities for kids and teens
- ❖ Dining options include a dinner cruise and in-villa dining

Includes full buffet breakfast daily.

Location: An all-villa resort set on the white sands of Bang Tao Beach, 30 minutes drive from Patong. Distances: Phuket International Airport 17km, Beach 100m.

Property Features: 18 hole golf course, Pool, Restaurants (5), Bars (2), 24 hour room service, Café, Kids club, Banyan Tree Spa, Fitness centre, Tennis court, Bicycle hire (free), Yoga classes, Resort boutique, 208 villas.

Room Features: Private spa/pool, Air-conditioning, Tea/coffee making facilities, Mini bar, In-room movies (extra charge), Sun lounges, Bathrobes.

Max Capacity: Banyan Pool Villa/Grand Lagoon Pool Villa/Serenity Pool Villa/Signature Pool Villa//1 Bedroom DoublePool Villa – 2 adults, Grand Two Bedroom Pool Villa/Two Bedroom DoublePool Villa – 5. Other room types also available.



*FROM PRICES ARE A GUIDE ONLY, subject to change and availability and are in Australian Dollars. Prices are per room per night for 2 people, unless otherwise specified and based on the lowest room category for travel in low season. For full terms and conditions, refer to the Booking Conditions on the inside back cover of this brochure.



Koh Yao

KOH PHI PHI & KOH YAO

Koh Phi Phi is a group of six islands which sit out in the sparkling blue waters of the Andaman Sea.

The populated island of Koh Phi Phi Don is a flurry of activity with beach bars, restaurants, shops and a vibrant nightlife. Koh Phi Phi Leh is surrounded by stunningly beautiful beaches and bays.

Located in Phang Nga Bay, famous for its limestone formations and pristine beaches, are the islands of Koh Yao Noi and Koh Yao Yai. Both islands are where you go if you want to just unwind, relax and experience a tranquil, traditional Thai escape.

SEE

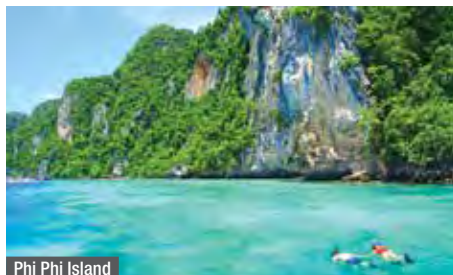
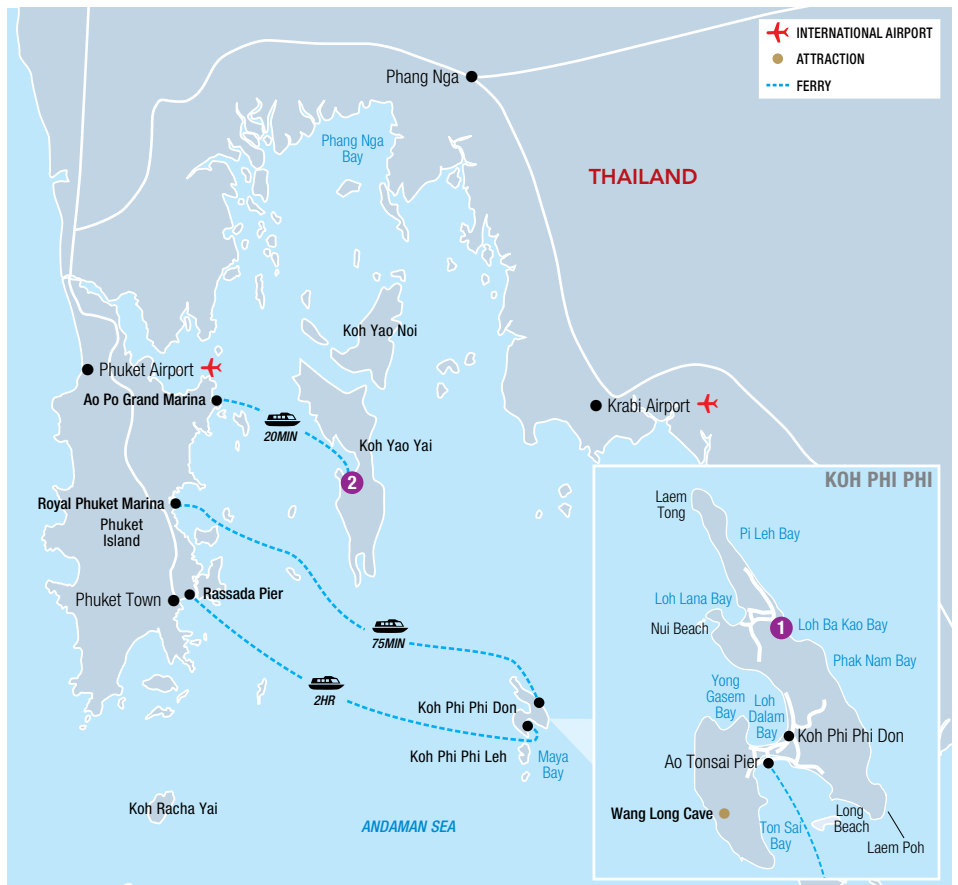
- Admire a stunning sunset while enjoying cocktails on the beach at Mama Resto Koh Phi Phi Don
- Watch hunters gather Swiftlet's bird nests, considered a delicacy in Asia, at Viking Cave on Koh Phi Phi Leh

DO

- Hire a kayak and explore the secluded caves and rocky outcrops around the islands
- Take a longtail boat to Pi Leh Bay and swim and snorkel in the emerald green waters

EAT & DRINK

- Enjoy Thai infused delights while watching the famous nightly fire show at Carpe Diem, Koh Phi Phi Don
- Delight in a mouth-watering Kingfish steak at Tonsai Seafood Restaurant, Koh Phi Phi Don



Phi Phi Island

REF.	HOTELS	PAGE
1	SAii Phi Phi Island Village	33
2	Santhiya Koh Yao Yai Resort & Spa	33

SAII PHI PHI ISLAND VILLAGE



Deluxe Garden Bungalow

49 Moo 8, Tumboon, Ao Nang, Phi Phi Island
MAP PAGE 32

From **\$293***

- ◆ Set on 70 acres of coconut palms, tropical gardens and 80 metres of beach
- ◆ Bungalows are generous in size and well appointed
- ◆ Extensive activities program including Marine Discovery Centre

Includes full buffet breakfast daily.

Location: Set on its own secluded beach on Loh Ba Gao in the Andaman Sea. Distances: Ton Sai Bay Pier 7km, Beachfront.

Getting There: 40 minute shared van transfer from Phuket Airport to Royal Phuket Marina, then 75 minute speedboat transfer. **\$206*** per adult return. Child price on application.

Property Features: Pools (2), Spa, Restaurants (4), Bars (3), Room service, Coffee shop, Day spa, Gym, Tennis courts, Use of kayaks, Resort shop, Laundry service, 201 rooms.

Room Features: Air-conditioning, Balcony or terrace, Tea/coffee making facilities, Mini bar, Cable TV, DVD player, Hair dryer.

Max Capacity: Deluxe Garden Bungalow/Deluxe Garden Villa – 3, Beachfront Junior Suite/Deluxe Premium Bungalow/Deluxe Sea View Bungalow/One Bedroom Hillside Pool Villa – 3 adults or 2 adults/2 children.



SANTHIYA KOH YAO YAI RESORT & SPA



Supreme Deluxe Sea View

88 Moo 7, Phunai, Koh Yao, Phang Nga
MAP PAGE 32

From **\$171***

- ◆ Seven restaurants and bars ensure plenty of dining options
- ◆ Book a treatment at the day spa or a beach massage
- ◆ Generous rooms and villas offer sea views

Includes full buffet breakfast daily.

Location: On Loh Lopareh Beach. Distances: Beachfront.

Getting There: 30 minute shared van transfer from Phuket Airport to Ao Po Grand Marina, then 20 minute speedboat transfer. **\$136*** per adult return. Child price on application.

Property Features: Pools (2), Spa, Restaurants (7), Bars (4), 24 hour room service, Day spa, Gym, Children's playground, Bicycle hire, 24 hour reception, 226 rooms.

Room Features: Air-conditioning, Balcony, Tea/coffee making facilities, Mini bar, Cable TV, DVD player, Ironing facilities, Hair dryer, Bathrobes, Safe.

Max Capacity: Supreme Deluxe Bay View/Supreme Deluxe Sea View/Ocean View Pool Villa/Seawater Pool Villa – 3 adults or 2 adults/2 children, Two Bedroom Sea Water Pool Villa/Royal Grand Pool Villa – 6 adults or 4 adults/4 children.



KHAO LAK

Khao Lak offers a rare oasis for relaxation, with tropical forests and surrounding hills that sweep down to pristine white sand beaches. Situated north of Phuket and featuring beautiful waterfalls, thick lush jungle and exotic marine life, Khao Lak is one of Thailand's most peaceful resort destinations and a treasure for nature enthusiasts.

SEE

- Watch baby turtle hatchlings released back into the sea at Thai Muang National Park
- Visit the International Tsunami Museum and understand what the locals of Khao Lak experienced during this unexpected tsunami event

DO

- Shop for souvenirs and local handicrafts at the popular and lively Bang Niang Market
- Walk up to Ton Chong Fa Waterfall and cool off in one of the many clear water pools

EAT & DRINK

- Create your own Thai feast at the Paninnaka Thai Cooking School Khao Lak
- For the best Pad Krapow and cheap beers, dine at Madam Thai Food in Takuapa



Khao Lak Beach



Khao Lak Beach

REF.	HOTELS	PAGE
1	Khaolak Laguna	35
2	Khao Lak Merlin Resort	35
3	The Sands Khao Lak by Katathani	35



PRIVATE AIRPORT TRANSFERS

Get your holiday off to a great start and arrive in style with a private transfer.

Transfers are available from Phuket Airport to Khao Lak accommodation, 24 hours a day, 7 days a week. Sit back, relax and enjoy the passing scenery as you are transferred in air-conditioned comfort.

Travel distance from Phuket Airport to Khao Lak is approximately 80 kilometres and travel time is approximately 1 hour and 30 minutes, depending on time of day and traffic.

	1 to 2 People	3 to 6 People
Khao Lak Accommodation	\$136* [^]	\$157* [^]

[^]Price based on per vehicle one way to/from Phuket Airport, without guide.



THAI COOKING CLASS

Learn to prepare and cook some of Thailand's most famous dishes and the art of fruit carving on this four hour culinary experience. Start the day with a trip to an organic vegetable garden to learn about secrets of the Thai kitchen before preparing your meal. Once ready enjoy the fruits of your labour for lunch.

Includes:

- Learn to prepare Thai dishes
- Certificate and recipe card
- Lunch
- Return transfers from Khao Lak accommodation

Duration: 4 hours

Departs: Mon, Tue, Thu from Khao Lak at 8:30am

Tour not suitable for children under 12 yrs.

	Adult
Cooking Class	\$111* [^]

[^]Minimum 4 people.



SIMILAN ISLANDS WITH LUNCH

The Similar Islands are surrounded by crystal clear waters, fine white powder sand and spectacular coral reefs. Take a tour by speedboat to discover the breathtaking beauty of these islands. Visit a number of islands and snorkel above bright coral reefs and marine life. The early morning itinerary is designed to beat the crowds and give the best experience of the Similar Islands.

Includes:

- Guided tour of the Similar Islands by speedboat
- Use of snorkelling equipment and instructions
- English speaking guide
- Lunch • National park fees
- Return transfers from Khao Lak accommodation

Duration: 9 hours

Departs: Daily from Khao Lak at 6am (15 Oct 24 – 31 Mar 25)

	Adult	Child 3-11 yrs
Full Day Tour	\$202*	\$139*

KHAOLAK LAGUNA



Siam Chalet

26/8 Moo 7, Petchakasem Road, Khuk-Khak, Takuapa, Phang Nga
MAP PAGE 34

From **\$217***

- ❖ Couples and families will love the separate adults and children's pools
 - ❖ Daily activities include Yoga, Body Stretch, Thai Boxing and Kayaking
 - ❖ Generous sized rooms are well appointed with oriental artwork throughout
- Includes full buffet breakfast daily.**

Location: In the coastal area of Khao Lak, and within walking distance to the local shopping centre. Distances: Phuket International Airport 75km, Beachfront.

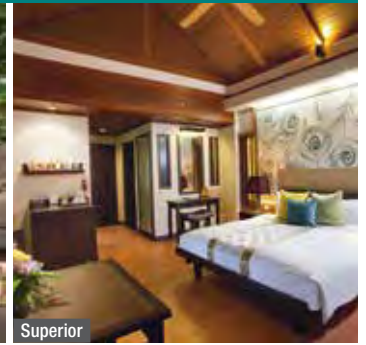
Property Features: Thai cooking classes (extra charge), Pools (4 – including children's), Restaurants (2), Bars (2), Club Lounge, Room service, CHIVA SPA, Fitness centre, Sauna, Bicycle hire (free), Kids Club, Children's playground, Laundry/dry cleaning service, 24 hour reception, 154 rooms.

Room Features: Air-conditioning, Balcony or terrace, Tea/coffee making facilities, Mini bar, Cable TV, Hair dryer, Beach bag, Bathrobes, Safe.

Max Capacity: Siam Chalet/Oriental Villa/Similan Pearl Villa – 3.



KHAO LAK MERLIN RESORT



Superior

7/7 Phetkasem Road, Lamkaen, Taimuang, Phang Nga
MAP PAGE 34

From **\$201***

- ❖ Direct access to 190 metres of Khao Lak Beach
 - ❖ Built around lagoons and cascading pools, leading to the beach
 - ❖ Sunset Hut offers a great location to watch the sun set with cocktail in hand
- Includes full buffet breakfast daily.**

Location: Direct access to Khao Lak Beach and surrounded by 15 acres of tropical gardens. Distances: Phuket International Airport 60km, Beachfront.

Property Features: Pools (4), Restaurants (2), Bars (2), 24 hour room service, Day spa, Gym, Children's playground, Tennis court, Table tennis, 236 rooms.

Room Features: Air-conditioning, Balcony or terrace, Tea/coffee making facilities, Mini bar, Cable TV, Hair dryer.

Max Capacity: Superior/Deluxe/Deluxe Pool Access/One Bedroom Pool Villa – 3, Two Bedroom Pool Villa – 6.



THE SANDS KHAO LAK BY KATATHANI



Sands

10/18 Petchkasem Road, Moo 7, Kukkak, Takuapa, Phang Nga
MAP PAGE 34

From **\$195***

- ❖ Resort divided into three zones for relaxing, playing and refreshing
 - ❖ Direct access to 200 metres of prime beachfront
 - ❖ Adult only pool and a water zone child's pool area
- Includes full buffet breakfast daily.**

Location: Set on the soft golden sands of Nang Thong Beach, just a few minutes walk to shopping and restaurants. Distances: Phuket International Airport 80km, Beachfront.

Property Features: Pools (3), Spa, Restaurants (3), Bars (4), Room service, Kids club 4-12 years (free), Day spa, Fitness Centre, Mini water park with waterslides and lazy river, Tennis court, Petanque Lane, 24 hour reception, Guest laundry, 439 rooms.

Room Features: Air-conditioning, Balcony or terrace, Tea/coffee making facilities, Mini bar, Cable TV, DVD player, Hair dryer, Bathrobes, Safe.

Max Capacity: Sands Room/Pool Access Junior Suite/Pool Access Seaside Junior Suite/Seaside Junior Suite – 3, Family/Family Slide/Pool Access Family – 2 adults/2 children, Sands Interconnecting – 6.



KRABI

Only an hour's flight from Bangkok, Krabi is renowned for its stunning natural beauty, soft sandy beaches, tropical forests, thermal hot springs and soaring limestone cliffs. Krabi is less crowded than Phuket and more laid-back than Koh Samui. Whether you're snorkelling among the colourful sea life, exploring caves by kayak or strolling through the night markets, Krabi is truly magical.

SEE

- Take in the tranquillity of a hidden lagoon inside one of the limestone caves near Railay Beach
- View the famous vividly coloured Emerald and Blue Pools in the Thung Teao Forest National Park

DO

- Bathe in the ancient, thermal, mineral rich waters of Klong Thom Hot Springs
- Climb the 1,272 steps up a limestone tower to see the 'Footprint of the Buddha'

EAT & DRINK

- Embark on a culinary journey and enjoy all-day dining set against the backdrop of stunning Ao Nang Beach at Reeve Beach Club
- Sip a speciality cocktail at The Hilltop with its spectacular views over Nopparat Thara Bay

WHAT'S ON

Andaman Sea Festival

1 to 3 November



Railay Beach, Krabi



Koh Poda, Krabi

REF.	HOTELS	PAGE
1	AVANI Ao Nang Cliff Krabi Resort	37
2	Centara Ao Nang Beach Resort & Spa Krabi	37
3	Dusit Thani Krabi Beach Resort	37



PRIVATE AIRPORT TRANSFERS

Get your holiday off to a great start and arrive in style with a private transfer.

Transfers are available from Krabi Airport to Krabi accommodation, 24 hours a day, 7 days a week. Sit back, relax and enjoy the passing scenery as you are transferred in air-conditioned comfort.

Travel distance from Krabi Airport to Ao Nang area is approximately 24 kilometres.

	1 to 2 People	3 to 6 people
Ao Nang Area	\$53* [^]	\$72* [^]
Klong Muang Area	\$82* [^]	\$84* [^]

[^]Price based on per vehicle to/from Krabi Airport, without guide.



4 ISLANDS BY SPEEDBOAT

Spend your morning on an exciting island-hopping adventure to tropical hot spots in the Krabi sea such as – Phra Nang Cave Beach, Koh Tup, Koh Gai (Chicken Island) and Koh Poda where you'll have time to swim, snorkel and laze on the beach. Expect to see a rich variety of coral and fish, crystal clear waters and white powdery sand beaches, lined with coconut palms.

Includes:

- Speedboat cruise
- Koh Tup, Koh Gai, Koh Poda and Phra Nang Cave beach
- Lunch including fruit and water
- Use of mask and snorkel
- Expert guide
- Return transfers from Krabi accommodation

Duration: 5 hours

Departs: Daily from Krabi at 8:30am

	Adult	Child 3-11 yrs
Half Day Tour	\$89*	\$48*



PHI PHI ISLAND BY SPEEDBOAT

The Phi Phi Islands are only 45 minutes from Krabi by speedboat. This day tour provides the opportunity to visit a stunning collection of islands and spend the day snorkelling and swimming in the crystal clear waters.

Includes:

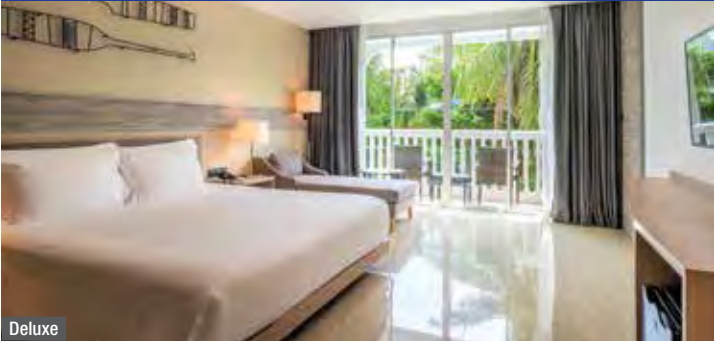
- Snorkelling at Bamboo Island and Lohsamah Bay
- Monkey Beach, Viking Cave, Pi Leh Bay, Maya Bay
- Use of snorkelling equipment
- Expert guide
- Lunch at Tongsai Bay
- Return transfers from Krabi accommodation

Duration: 8 hours

Departs: Daily from Krabi at 8am

	Adult	Child 3-11 yrs
Full Day Tour	\$118*	\$63*

CENTARA AO NANG BEACH RESORT & SPA KRABI



Deluxe

981 Moo 2, Tambon Ao Nang, Amphur Muang, Krabi
MAP PAGE 36

From **\$152***

- ❖ Absolute beachfront resort with great views from pool and Sands Beach Club
 - ❖ Wide range of accommodation options to suit couples and families of all sizes
 - ❖ Impressive free-form swimming pool with waterslides for young and old
- Includes full buffet breakfast daily.**

Location: Nestled at the quieter end of Ao Nang Beach, just a short stroll from local eateries and bars. Distances: Krabi Airport 28km, Beachfront.

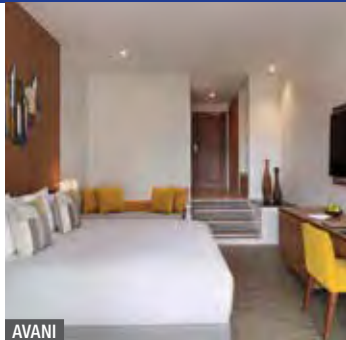
Property Features: Pools (3 – including children's), Spa, Restaurants (3), Bars (2), 24 hour room service, Kids club 4-12 years (free), Day spa, Gym, Sauna, Laundry service, Resort shop, 179 rooms.

Room Features: Air-conditioning, Balcony or terrace, Tea/coffee making facilities, Mini bar, Cable TV, Hair dryer, Safe.

Max Capacity: Deluxe/Deluxe Pool Access/Premium Deluxe/Premium Deluxe Pool Terrace – 3 adults or 2 adults/2 children, Family Residence – 2 adults/2 children.



AVANI AO NANG CLIFF KRABI RESORT



AVANI

328 Moo 2, Tambol Ao Nang, Krabi
MAP PAGE 36

From **\$185***

- ❖ Contemporary designed rooms featuring natural light with patios or terraces
 - ❖ Poolside service means never leaving the resort's beautiful infinity pool
 - ❖ The Peak Rooftop Bar has stunning views and delicious international cuisine
- Includes full buffet breakfast daily.**

Location: Set on a hill slope, in the centre of Ao Nang area, and close to shopping, dining and entertainment. Distances: Krabi Airport 25km, Beach 450m.

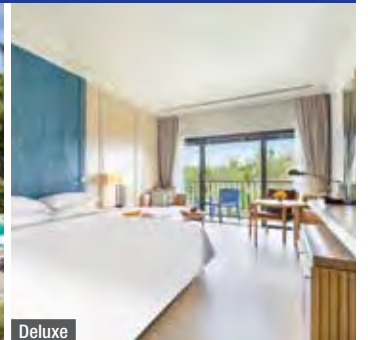
Property Features: Pools (2), Restaurants (2), Bars (2 – 1 rooftop), Room service, Day spa, Gym, Laundry service, 24 hour reception, 178 rooms.

Room Features: Air-conditioning, Balcony or terrace, Tea/coffee making facilities, Mini bar, Cable TV, Hair dryer.

Max Capacity: AVANI/AVANI Superior/AVANI Sea View/AVANI Family Suite/AVANI Villa/AVANI Pool Villa – 3 adults or 2 adults/2 children.



DUSIT THANI KRABI BEACH RESORT



Deluxe

155 Moo 2, Nong Thale, Muang, Krabi
MAP PAGE 36

From **\$206***

- ❖ Direct access to 1.8 kilometres of exquisite white sand beach
 - ❖ Choose from two beachfront pools
 - ❖ Spacious, comfortable rooms feature modern amenities and private balconies
- Includes full buffet breakfast daily.**

Location: Situated on the shores of Klong Muang beach with local restaurants just a short stroll away. Distances: Krabi Airport 25km, Beachfront.

Property Features: Pools (2), Spa, Restaurants (3), Bars (2), 24 hour room service, Kids club 4-12 years (free), Day spa, Gym, Laundry/dry cleaning service, 240 rooms.

Room Features: Air-conditioning, Balcony or terrace, Tea/coffee making facilities, Mini bar, Cable TV, Hair dryer, Bathrobes, Safe.

Max Capacity: Deluxe/Deluxe Sea Facing/Club Deluxe/Club Premium Sea Facing – 3.





Ang Thong National Marine Park

KOH SAMUI & KOH PHANGAN

Amazing coral reefs, clear warm waters, white sandy beaches, hammocks slung between coconut trees – welcome to Koh Samui. You'll find open-air restaurants, colourful market stalls and a vibrant nightlife.

Koh Phangan is draped in acres of untouched tropical rainforests and blessed with rich coral reefs. Once a month, Koh Phangan is famous for its Full Moon beach parties.

SEE

- Visit Wat Plai Laem on Koh Samui with its imposing 18 arm statue of Guanyin and the laughing Buddha

DO

- Snorkel in pristine and protected waters of Ang Thong National Marine Park, Koh Samui
- Head to Fisherman's Village on Koh Samui on a Friday evening and browse the market stalls
- Dive at Sail Rock on Koh Phangan, abundant with colourful sea life

EAT & DRINK

- Savour a banana or roti pancake with various flavours from a local street cart on Koh Samui
- Be spoilt for food choices at the Thong Sala Night Food Market, Koh Phangan

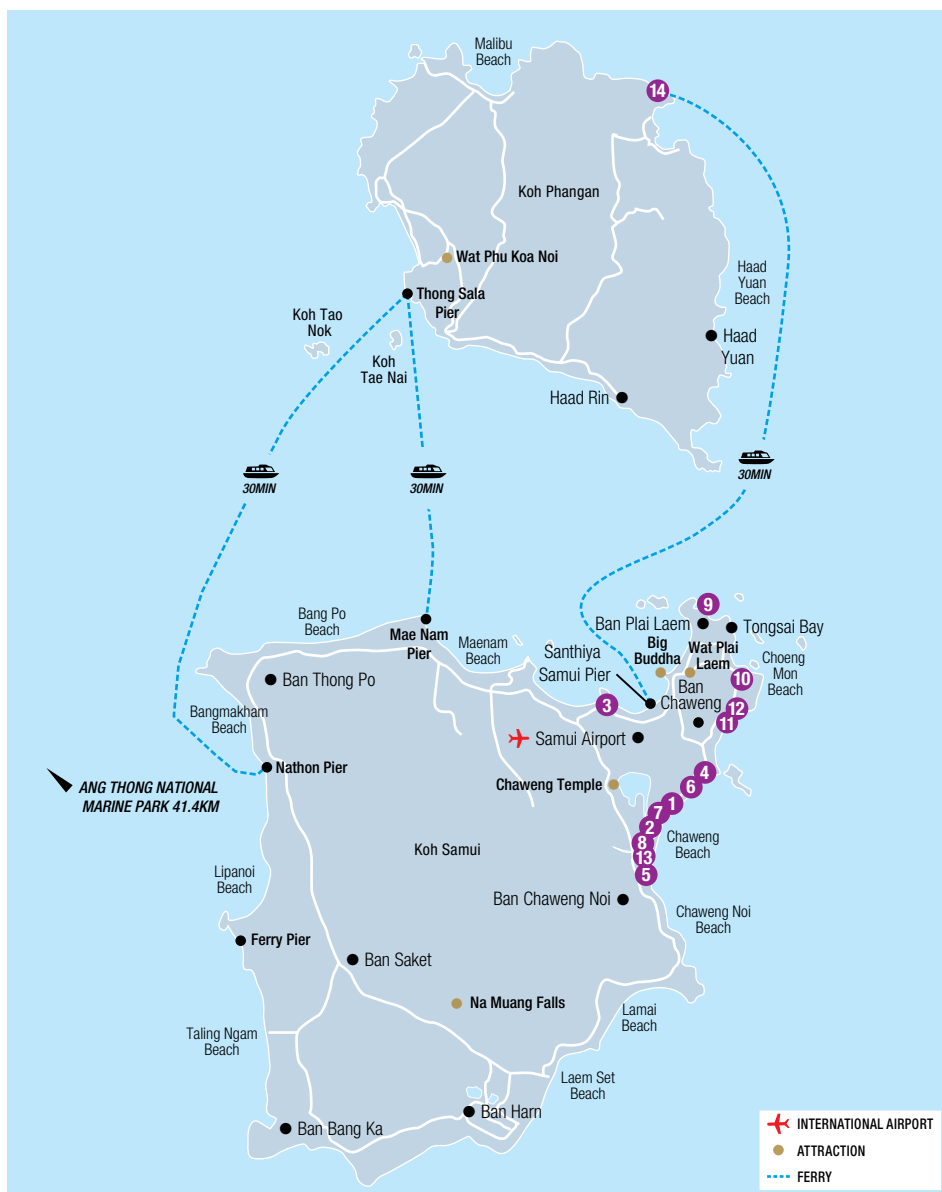
WHAT'S ON

Samui Regatta, Koh Samui

18 to 25 May

Full Moon Party, Koh Phangan

(Monthly on the full moon of the lunar calendar)



REF.	HOTELS	PAGE	REF.	HOTELS	PAGE
1	Amari Koh Samui	40	8	Matcha Samui Resort (formerly Chaba Samui Resort)	40
2	Baan Samui Resort	40	9	Melati Beach Resort & Spa	44
3	Bandara Resort and Spa	40	10	Melia Koh Samui	45
4	Beyond Kandabuuri	41	11	Nora Beach Resort & Spa	42
5	Centara Reserve Samui	44	12	Nora Buri Resort & Spa	42
6	Chaba Cabana Beach Resort	41	13	OZO Chaweng Samui	41
7	Chaweng Regent Beach Resort	43	14	Santhiya Koh Phangan Resort & Spa	45



PRIVATE AIRPORT TRANSFERS

Get your holiday off to a great start and arrive in style with a private transfer.

Transfers are available from Koh Samui Airport to Koh Samui accommodation, 24 hours a day, 7 days a week. Sit back, relax and enjoy the passing scenery as you are transferred in air-conditioned comfort.

Travel distance from Koh Samui Airport to Chaweng Beach is approximately 4 kilometres and Bophut Beach is 7 kilometres. Travel time depends on time of day and traffic.

	1 to 2 People	3 to 6 People
Koh Samui Downtown	\$43* [^]	\$46* [^]

[^]Price based on per vehicle one way to/from Koh Samui Airport, without guide.



PRIVATE SAMUI ISLAND TOUR

To get the true feel of Koh Samui this tour is a must. See the key highlights and attractions that Koh Samui offers as well as the many beautiful beaches. Visit the Grandfather and Grandmother Rocks, a natural rock formation that will raise an eyebrow, see the Big Buddha, standing 12 metres tall, and marvel at the spectacular views of the island's natural wilderness at Na Muang Waterfall.

Includes:

- Expert local guide
- Transport by air-conditioned vehicle
- Return transfers from selected Koh Samui accommodation

Duration: 4 hours

Departs: Daily from Koh Samui at 8:30am

	2 People	3 to 5 People
Private Half Day Tour	\$142*	\$98*



ANG THONG SNORKELLING & KAYAKING BY SPEEDBOAT

The 42 islands of Ang Thong Marine Park are dotted with sandy beaches, limestone cliffs, caves and secluded bays. Cruise to Ko Wao – one of the shallow water coral reefs in the park. Admire the beautiful scenery of Ko Tai Plao, Monkey Island and Lion Island. Hike to Emerald Lake at Ko Mae Ko. After lunch, head back to Koh Samui via Song Pee Nong Beach.

Includes:

- Speedboat to Ang Thong National Marine Park
- Lunch • Snorkelling equipment • Expert guide
- Return transfers from selected Koh Samui accommodation

Duration: 8 hours

Departs: Daily from Koh Samui at 8:30am (Apr – Oct, 16 Dec 24 – 31 Mar 25)

	Adult	Child 3-11 yrs
Full Day Tour	\$163* [^]	\$108* [^]

[^]Price includes national park admission fee of THB300 per adult and THB150 per child to be paid directly to the operator by you.



KOH TAO & KOH NANG YUAN SNORKELLING TOUR

Travel by speedboat to the island beaches where you can spend your day swimming, snorkelling or sunbathing on white sand. Enjoy the clear water and snorkel to see the abundant marine life and coral.

Includes:

- Use of snorkelling equipment
- Expert guide
- Lunch
- Return transfers from selected Koh Samui accommodation

Duration: 8 hours

Departs: Daily from Koh Samui at 7:30am

	Adult	Child 3-11 yrs
Full Day Tour	\$134* [^]	\$94* [^]

[^]Price includes national park admission fee of THB300 per adult and THB150 per child to be paid directly to the operator by you.



THAI COOKING CLASS

Experience the art of Thai cooking alongside a professional Thai chef at the Amari Samui. Tour a herbal garden and learn about the local plants used in various Thai dishes. Then it's into class to cook three delicious dishes to enjoy for lunch.

Includes:

- Cooking class
- All ingredients
- Welcome drink (alcoholic or non-alcoholic)

Duration: 3 hours

Departs: Daily from Amari Samui at 12pm

	Adult
Cooking Class	\$133*



JUNGLE DISCOVERY TOUR

See the sights of Koh Samui from the back of a 4WD jeep on this exciting and adventurous day out. Travel through the jungle, across rivers and hidden valleys to beautiful waterfalls. Enjoy lunch in a small mountain restaurant and take in the stunning view from the highest point on the island.

Includes:

- Lunch
- Transport by 4WD vehicle
- Experienced guide
- Return transfers from selected Koh Samui accommodation

Duration: 7 hours



Departs: Daily from Koh Samui at 8am

	Adult	Child 3-11 yrs
Full Day Tour	\$87*	\$61*

KOH SAMUI ACCOMMODATION

BAAN SAMUI RESORT

◆◆◆◆

Superior

14/7 Moo 2, Chaweng Beach, Koh Samui
MAP PAGE 38

From **\$179***

- ◆ Close to the shopping, restaurant and bar district
- ◆ All rooms and bathrooms have recently been refurbished
- ◆ Moon Dance Restaurant offers open-air dining with sea breezes

Includes full buffet breakfast daily.

Location: On a white sandy beach in the centre of popular Chaweng. Distances: Koh Samui Airport 7km, Beachfront.

Property Features: Pool (including children's), Restaurant, Bar, Room service, Laundry/dry cleaning service, Lift, 24 hour reception, 79 rooms.

Room Features: Air-conditioning, Balcony or terrace, Tea/coffee making facilities, Mini bar, Cable TV, Hair dryer, Bathrobes, Safe.

Max Capacity: Superior/Deluxe/Junior Suite – 3, Family Suite – 6.



MATCHA SAMUI RESORT (FORMERLY CHABA SAMUI RESORT)

◆◆◆◆




Deluxe Lake Building

19 Chaweng Beach Road, Bo Put, Koh Samui
MAP PAGE 38

From **\$120***

- ◆ Ideally located within walking distance of bars and restaurants
- ◆ Lake Building rooms are across the road from the beach
- ◆ Ocean Building rooms have private balconies with garden views

Includes full breakfast daily and welcome drink.

Location: In central Chaweng with shopping, dining and nightlife, all at your doorstep. Distances: Koh Samui Airport 8km, Beachfront.

Property Features: Pools (2), Restaurant, Bar, Room service, Coffee shop, Gym, Children's playground, Guest laundry, 24 hour reception, 93 rooms.



Room Features: Air-conditioning, Tea/coffee making facilities, Cable TV, Hair dryer, Bathrobes, Safe.

Max Capacity: Deluxe Lake Building/Deluxe Ocean Building/Sunrise Suite – 3, Family Room Ocean Building – 3 adults or 2 adults/2 children.



AMARI KOH SAMUI

◆◆◆◆

Superior Garden Wing

14/3 Moo 2, Chaweng Beach
MAP PAGE 38

From **\$266***

- ◆ Rooms and suites are elegantly designed offering large living space
- ◆ Beachfront location on popular Chaweng Beach
- ◆ Dining options including the Amaya Food Gallery with different cooking stations

Includes full buffet breakfast daily.

Location: Set on Chaweng Beach, overlooking the waters of the Gulf of Thailand. Distances: Koh Samui Airport 3.8km, Beachfront.

Property Features: Pools (2), Restaurants (2), Bar, Café, Kids club 4-12 years (extra charge), Day spa, 24 hour reception, 193 rooms.

Room Features: Air-conditioning, Balcony or terrace, Tea/coffee making facilities, Mini bar, Cable TV, Ironing facilities, Hair dryer, Bathrobes, Safe.

Max Capacity: Deluxe Family – 2 adults/2 children, Deluxe Pool View/Deluxe Thai Village/Junior Suite Beach Wing/Junior Suite Ocean View/Superior Garden Wing – 3, Grand Deluxe Ocean View – 2 adults/1 child, Two Bedroom Family Suite Beach Wing/Two Bedroom Family Suite Pool View – 5.



BANDARA RESORT AND SPA

◆◆◆◆




Deluxe

178/2 Moo 1, Tambol Bophut, Koh Samui
MAP PAGE 38

From **\$314***

- ◆ A short stroll to Bophut Fisherman's village shops and markets
- ◆ Well-appointed rooms and lavish villas with private garden and plunge pool
- ◆ A day spa and four swimming pools including beachfront pools

Includes full buffet breakfast daily.

Location: On the peaceful north coast of Samui Island, set among gardens overlooking Bophut Beach. Distances: Koh Samui Airport 7km, Beachfront.

Property Features: Pools (4 – 1 children's), Restaurant, Bars (2), Café, Room service, Kids club 5-12 years, Day spa, Gym, Laundry/dry cleaning service, 168 rooms.

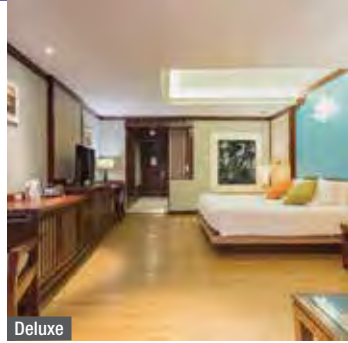
Room Features: Air-conditioning, Balcony or terrace, Tea/coffee making facilities, Mini bar, Cable TV, Hair dryer, Bathrobes, Safe.

Max Capacity: Deluxe – 2, Tropical Deluxe/Plunge Pool Villa/Pool Villa Suite – 3, Family – 2 adults/2 children.



* FROM PRICES ARE A GUIDE ONLY, subject to change and availability and are in Australian Dollars. Prices are per room per night for 2 people, unless otherwise specified and based on the lowest room category for travel in low season. For full terms and conditions, refer to the Booking Conditions on the inside back cover of this brochure.

BEYOND KANDABUURI



Deluxe

20 Moo 2, Chaweng Chongmon Road, Koh Samui
MAP PAGE 38

From **\$244***

- ❖ Hotel is split into Hillside and Beachside zones
- ❖ Well-appointed rooms have private balconies with garden or water views
- ❖ Private dining by beach set up available for special occasions

Includes full buffet breakfast daily.

Location: On the northern end of Chaweng Beach. Distances: Koh Samui Airport 3.3km, Beachfront.

Property Features: Pools (2 – including children's), Restaurants (2), Bars (2), 24 hour room service, Day spa, Gym, Guest laundry, Resort shop, 183 rooms.

Room Features: Air-conditioning, Balcony or terrace, Tea/coffee making facilities, Cable TV, Hair dryer, Safe.

Max Capacity: Deluxe/Junior Suite – 3, Family – 2 adults/2 children, 2 Bedroom Suite – 4.



OZO CHAWENG SAMUI



Superior

11/34 Moo 2, Chaweng Beach, Koh Samui
MAP PAGE 38

From **\$195***

- ❖ Comfortable rooms with modern amenities
- ❖ Restaurants offer a fantastic selection of Thai and international favourites
- ❖ Head to nearby Chaweng for bars, gourmet dining and activities

Includes full buffet breakfast daily.

Location: On the beach in Koh Samui and only a short walk to the centre of Chaweng. Distances: Koh Samui Airport 5km, Beachfront.

Property Features: Pool, Restaurants (2), Bar, Gym, 208 rooms.

Room Features: Air-conditioning, Balcony, Tea/coffee making facilities, Cable TV, Multimedia connectivity panel with HDMI, USB and audio connections, Hair dryer, Safe.

Max Capacity: Superior/Deluxe/Deluxe Ocean/Deluxe Pool/Deluxe Beachfront – 2, Deluxe Corner – 3.



CHABA CABANA BEACH RESORT



Deluxe Building

160 Moo 2, Chaweng Beach Road, Koh Samui
MAP PAGE 38

From **\$147***

- ❖ Newly refurbished combining sleek, modern design with rustic island charm
- ❖ 150 metres of soft, sandy beachfront
- ❖ Beach massages, romantic dinners and cooking classes available

Includes full buffet breakfast daily.

Location: Set towards the northern end of Chaweng Beach, and minutes from central Chaweng. Distances: Koh Samui Airport 3km, Beachfront.

Property Features: Thai cooking classes (extra charge), Pool, Restaurant, Bar, Room service, Massage services, Gym, Children's playground, Guest laundry, 24 hour reception, 78 rooms.

Room Features: Air-conditioning, Balcony or terrace, Tea/coffee making facilities, Mini bar, Cable TV, Hair dryer, Bathrobes, Safe.

Max Capacity: Deluxe Building/Deluxe Villa – 3, Family Room – 2 adults/2 children.



Family Room



KOH SAMUI ACCOMMODATION

NORA BEACH RESORT & SPA

◆◆◆◆



Deluxe



Deluxe Sea Facing

222 Moo 2, Chaweng Beach, Koh Samui
MAP PAGE 38

From **\$206***

- ❖ Beachfront pool with swim-up bar and spa
- ❖ Well-appointed rooms combine old-world charm with modern comforts
- ❖ Complimentary shuttle service to and from Chaweng town centre

Includes full buffet breakfast daily.

Location: Overlooks a secluded bay and is a five minute drive north of Chaweng Beach. Distances: Koh Samui Airport 1.5km, Beachfront.

Property Features: Pool, Spa, Restaurant, Bars (2), Room service, Day spa, Gym, Shuttle service (free), 113 rooms.

Room Features: Air-conditioning, Balcony, Tea/coffee making facilities, Mini bar, Cable TV, Hair dryer, Safe.

Max Capacity: Deluxe/Deluxe Sea Facing/Nora Ocean Villa/Beachfront Pool Villa Suite – 3, Family Suite/Family Pool Villa Suite – 4.



NORA BURI RESORT & SPA

◆◆◆◆◆



Deluxe Hillside



111 Moo 5, Chaweng Beach, Koh Samui
MAP PAGE 38

From **\$228***

- ❖ Complimentary shuttle service to downtown Chaweng
- ❖ Spacious rooms have terraces or balconies with either garden or sea views
- ❖ Six restaurants and bars including a pool bar and beach bar

Includes full buffet breakfast daily.

Location: On the curving north end of Chaweng Beach, minutes from shopping, dining and nightlife. Distances: Koh Samui Airport 1.5km, Beach 300m.

Property Features: Thai cooking classes (extra charge), Pools (2), Restaurants (3), Bars (3), Room service, Laundry/dry cleaning service, 144 rooms.

Room Features: Air-conditioning, Balcony or terrace, Tea/coffee making facilities, Mini bar, Cable TV, DVD player, Hair dryer, Safe.

Max Capacity: Deluxe Hillside/Deluxe Hillside Seaview/Pool Villa Hillside Seaview/Pool Villa Beachside – 3.



* FROM PRICES ARE A GUIDE ONLY, subject to change and availability and are in Australian Dollars. Prices are per room per night for 2 people, unless otherwise specified and based on the lowest room category for travel in low season. For full terms and conditions, refer to the Booking Conditions on the inside back cover of this brochure.

CHAWENG REGENT BEACH RESORT



155/4 Chaweng Beach, Koh Samui
MAP PAGE 38

From **\$336***

- ❖ Rooms are set in low-rise buildings and Thai-style village cottages
- ❖ Families will love the two freshwater free-form pools
- ❖ Beach pool bar offers happy hour drinks and great views of the sea
- ❖ Soothe body, mind and spirit at The Escape Spa
- ❖ Enjoy beachfront dining at Chom Talay Restaurant

Includes full buffet breakfast daily.

Location: Beachfront with sweeping views of the Gulf of Thailand and conveniently located to Chaweng's vibrant entertainment, dining and shopping scene. Distances: Koh Samui Airport 4km, Beachfront.

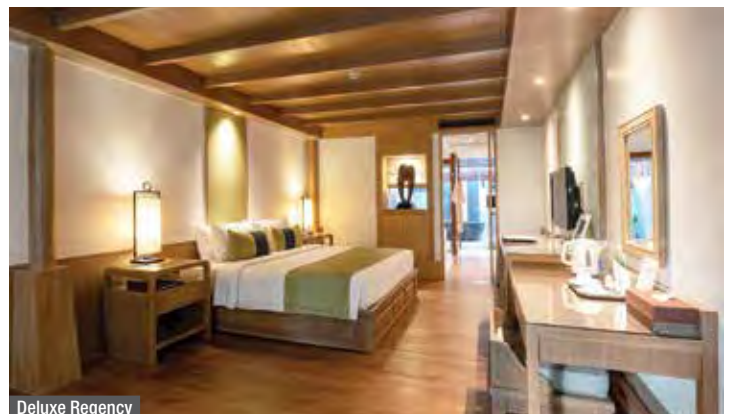
Property Features: Pools (2 – including children's), Spa, Restaurant, Bar, Private beach dining (extra charge), Room service, Day spa, Gym, Kids club 4-11 years (free), Laundry service, 24 hour reception, 155 rooms.

Room Features: Air-conditioning, Balcony or terrace, Outdoor jacuzzi (Spa Villa Suite), Tea/coffee making facilities, Mini bar, Cable TV, DVD player, Hair dryer, Bathrobes, Safe.

Max Capacity: Deluxe Regency/Premier – 3, Deluxe Villa – 2, Grand Premier/Royal Suite/Spa Villa Suite – 3 adults/1 child, Grand Premier Family – 4 adults or 3 adults/2 children.



Grand Premier Family



Deluxe Regency



*FROM PRICES ARE A GUIDE ONLY, subject to change and availability and are in Australian Dollars. Prices are per room per night for 2 people, unless otherwise specified and based on the lowest room category for travel in low season. For full terms and conditions, refer to the Booking Conditions on the inside back cover of this brochure.

KOH SAMUI ACCOMMODATION

CENTARA RESERVE SAMUI



Deluxe Garden

38/2 Moo 3 Borpud Chaweng Beach, Koh Samui
MAP PAGE 38

From **\$450***

- ◆ New luxury resort set on one of the island's most desirable beaches
- ◆ Picture-perfect pools including free-form beachfront pool with whirlpools
- ◆ Reserve Gastronome offers diverse dining experiences

Includes full buffet breakfast daily and mini bar refilled daily including carafes of spirits, local beer, soft drinks, juice and homemade snacks.

Location: Nestled in lush gardens set on the tranquil end of Chaweng Beach.
Distances: Koh Samui Airport 4.5km, Beachfront.

Property Features: Pools (2 – including children's), Spa, Restaurants (4), Bars (2), 24 hour room service, Kids club 4-12 years with technology-free zone and wet playground (free), Day spa, Fitness centre, Yoga pavilion, Laundry service, 184 rooms.

Room Features: Air-conditioning, Balcony or terrace, Private plunge pool (Reserve Pool Suite), Room service 'surprise of the day', Tea/coffee making facilities, Mini bar, Cable TV, Hair dryer, Safe.

Max Capacity: Deluxe Garden/Deluxe Ocean – 2, Deluxe Pool Access/Luxury Ocean/Reserve Ocean/Reserve Pool Suite – 3.



MELATI BEACH RESORT & SPA



Grand Deluxe

9/99 Moo 5, Bophut, Tongson Bay, Koh Samui
MAP PAGE 38

From **\$433***

- ◆ 15 minute drive to the entertainment precinct of Chaweng Beach
- ◆ All rooms, except Grand Deluxe, have private pools
- ◆ Dining choices include private beach dining and private in-villa barbecues

Includes full buffet breakfast daily.

Location: On a secluded stretch of beach at Tongson Bay, in the north of Samui Island.
Distances: Koh Samui Airport 6.6km, Beachfront.

Property Features: Thai cooking classes (extra charge), Pools (2 – including children's), Spa, Restaurants (2), Bars (3), Room service, Kids club 3-8 years (free), Day spa, Yoga classes, Gym, Laundry/dry cleaning service, 24 hour reception, Shuttle bus service to Chaweng Beach, 77 rooms.

Room Features: Private pools (except Grand Deluxe), Air-conditioning, Balcony or terrace, Tea/coffee making facilities, Mini bar, Cable TV, DVD player, Hair dryer, Bathrobes, Safe.

Max Capacity: Grand Deluxe/Private Garden Pool/Pool Villa/Pool Villa Suite – 4, Family Pool Villa – 5, Presidential Suite – 7.



Pool Villa Suite



* FROM PRICES ARE A GUIDE ONLY, subject to change and availability and are in Australian Dollars. Prices are per room per night for 2 people, unless otherwise specified and based on the lowest room category for travel in low season. For full terms and conditions, refer to the Booking Conditions on the inside back cover of this brochure.

MELIA KOH SAMUI



Deluxe Room

83 Choeng Mon Beach, Bophut, Koh Samui
MAP PAGE 38

From **\$287***

- ❖ Elegant designer suites surrounded by lush vegetation
- ❖ Enjoy a wide variety of international dishes at Breeze Beach Restaurant
- ❖ Close to all the main attractions on the island

Includes full buffet breakfast daily.

Location: Nestled on tranquil Choeng Mon Beach, a 5 minute drive from Samui International Airport. Distances: Koh Samui Airport 5km, Beachfront.

Property Features: Pool, Waterslide, Restaurants (2), Bars (3), Room service, Kids club, Children's play area, 24 hour gym, Day spa, Steam room, Laundry service, 24 hour reception, 200 rooms.

Room Features: Air-conditioning, Balcony, Tea/coffee making facilities, Mini bar, Bathrobes, Hair dryer, Safe.

Max Capacity: Deluxe Room/Premium Room/THE LEVEL Pool Access – 3 adults or 2 adults/1 child, Duplex Boat Suite/THE LEVEL Boat Suite Seaview – 2 adults, Grand Suite – 3 adults or 2 adults/2 children.



SANTHIYA KOH PHANGAN RESORT & SPA



Supreme Deluxe

22/7 Moo 5, Bantai, Koh Phangan
MAP PAGE 38

From **\$190***

- ❖ A hideaway set on 18 acres with private beach
- ❖ Families will love the many daily activities on offer
- ❖ Wide range of rooms, offering ocean views

Includes full buffet breakfast daily.

Location: On the north east coast of Koh Phangan on Thong Nai Pan Beach. Distances: Beachfront.

Getting There: 15 minute coach transfer from Koh Samui Airport to Samui Pier, then 30 minute speedboat transfer. **\$136*** per adult return. Child price on application.

Property Features: Thai cooking classes (extra charge), Muay Thai Boxing lessons (extra charge), Daily activities program, Pools (2), Restaurants (3), Bar, 24 hour room service, Day spa, Gym, Yoga classes, Kayaks/paddleboards (30 mins free), Library, 126 rooms.

Room Features: Air-conditioning, Balcony or terrace, Tea/coffee making facilities, Mini bar, Hair dryer, Safe.

Max Capacity: Supreme Dlx/Supreme Dlx Pool Access – 3, Hideaway Pool Villa/Sea View Pool Villa/Sea View Pool Villa Plus – 3 ad or 2 ad/2 ch. Other room type available.



Sea View Pool Villa



CHIANG MAI

Chiang Mai, in the heart of Northern Thailand, is surrounded by mystical mountains and is a quaint and peaceful town combining the best of ancient and modern Thailand. Home to over 300 temples, here you can enjoy unique Northern Thai cuisine, visit sacred temples, see the ancient walls of the Old City and find a bargain at the night bazaar.

SEE

- View the gold plated Chedi at Wat Phra That Doi Suthep, Chiang Mai, one of Thailand's holiest Buddhists sites

DO

- Visit a hilltribe for an insight into a simpler way of life consisting of culture, dress and traditions
- Stroll through Tha Pae Walking Street on a Sunday and pick up a bargain on clothes and souvenirs

EAT & DRINK

- Enjoy Thai Chinese fusion pork buns and lotus seed in syrup at Toey Dimsum
- Dine at Mr Green for fresh tasting vegan Thai food, try the Som Tam

PRIVATE TRANSFERS

Chiang Mai Airport to/from downtown Chiang Mai one way without guide (7km): By private car (1 to 2 People): **\$37*** per vehicle, (3 to 6 People): **\$44*** per vehicle.

Shared scheduled transfers also available.



Wat Phra That Doi Suthep



Wat Phra Singh

REF.	HOTELS	PAGE
1	Anantara Chiang Mai Resort	47
2	dusitD2 Chiang Mai	47



CHIANG MAI CITY & TEMPLES TOUR

The city of Chiang Mai has a wealth of beautiful and historic Buddhist Wats (temples). Visit the most fascinating, Wat Phra That Doi Suthep, a 600 year old temple and climb the 306 steps at Mythological Nagas (dragon-headed serpent) staircase. Enjoy the views of Chiang Mai from the temple grounds and explore Wat Suan Dok and Wat Chedi Luang.

Includes:

- Expert guide
- Transport by air-conditioned vehicle
- Return transfers from Chiang Mai accommodation

Duration: 3 hours 30 minutes

Departs: Daily from Chiang Mai at 8:30am or 1:30pm

	Adult	Child 3-11 yrs
Half Day Tour	\$47* [^]	\$24* [^]

[^]Minimum 3 people required.



WAT DOI SUTHEP & WHITE MEO HILLTRIBE TOUR

Head up to the mountains of Doi Suthep Pui National Park and visit the village of the White Meo Hilltribe. Explore the Wat Doi Suthep temple, the most sacred temple in the north, and see the holy relic of Lord Buddha.

Includes:

- Doi Suthep Pui National Park
- White Meo Hilltribe
- All admission fees
- Transport by air-conditioned vehicle
- Return transfers from Chiang Mai accommodation

Duration: 4 hours 30 minutes

Departs: Daily from Chiang Mai at 8am or 1pm

	Adult	Child 3-11 yrs
Half Day Tour	\$83* [^]	\$42* [^]

[^]Minimum 3 people required.



PRIVATE CHIANG RAI & GOLDEN TRIANGLE TOUR

Travel through beautiful scenery en route to Chiang Rai. Stop at the hot springs at Maekajan before visiting Wat Rongkhun, the White Chapel. Visit Baan Dam Museum, a private art museum comprising traditional northern Thai buildings with unconventional and contemporary architecture. Enjoy lunch at a local restaurant before continuing to the Golden Triangle. See the magnificent views over the Mae Khong River where the borders of Thailand, Myanmar and Laos meet.

Includes:

- Expert guide • Lunch
- Transport by air-conditioned vehicle
- Return transfers from Chiang Mai accommodation

Duration: 12 hours

Departs: Daily from Chiang Mai at 7am

	2 People	3 to 5 People
Private Full Day Tour	\$277*	\$208*

CHIANG MAI ACCOMMODATION



THE BUSH CAMP CHIANG MAI

Located on the Ping River with stunning views overlooking lush vegetation and misty mountains, the camp consists of 10 tailor-made, luxury tents, resembling African safari accommodation, where you can experience local life close to nature. During your stay, you will have the unique opportunity to join sustainable activities including the popular chain free, hands-off elephant experience at the on-site Elephant Park.

1 NIGHT STAY INCLUDES:

- 1 night tented accommodation with private facilities
- 1 breakfast, 2 lunches, 1 dinner
- Elephant and Mahout experience
- English speaking expert guide
- Return scheduled transfers from Chiang Mai accommodation

2 NIGHT STAY INCLUDES:

- 2 nights tented accommodation with private facilities
- 2 breakfasts, 3 lunches, 2 dinners
- Elephant and Mahout experiences
- Visit Elephant Valley
- English speaking expert guide
- Return scheduled transfers from Chiang Mai accommodation

TRAVEL TYPE Independent

DEPARTS Daily from Chiang Mai at 7:30am



1 Night From \$595* per person twin share

2 Nights From \$875* per person twin share

Children's prices from 4-15 yrs on application. Not suitable for children under 4 yrs.



Tent

DUSITD2 CHIANG MAI



Deluxe

100 Chang Klan Road, Muang, Chiang Mai
MAP PAGE 46

From **\$217***

- ❖ Located close to the night bazaar and Tha Phae Gate
- ❖ Rooftop gym with city views
- ❖ Dusit Club Privileges and added benefits available

Includes full buffet breakfast daily.

Location: In Chiang Mai's city centre. Distances: Chiang Mai International Airport 7km, City centre 1km.

Property Features: Pool, Restaurant, Bar, Room service, Day spa, Fitness centre, Laundry/dry cleaning service, 24 hour reception, 130 rooms.

Room Features: Air-conditioning, Tea/coffee making facilities, Mini bar, Cable TV, Hair dryer, Safe.

Max Capacity: Deluxe/Club Deluxe/Studio Suite – 3.

ANANTARA CHIANG MAI RESORT



Deluxe Garden View

123-123/1 Charoen Prathet Road, T. Changkran, A. Muang, Chiang Mai
MAP PAGE 46

From **\$438***

- ❖ A sanctuary in the city centre
- ❖ 100-year-old heritage house for dining and special events
- ❖ Rooms and suites feature open-plan design with Thai motifs and materials

Includes full buffet breakfast daily.

Location: On the banks of the Mae Ping River, and central to the city. Distances: Chiang Mai International Airport 6km, City centre 150m.

Property Features: River cruises available (extra charge), Pool, Restaurants (2), Bars (2), Room service, Fitness centre, Day spa/wellness centre, Steam room, Laundry/dry cleaning service, 24 hour reception, 84 rooms.

Room Features: Air-conditioning, Balcony, Mini bar, Tea/coffee making facilities, Smart TV, Hair dryer, Ironing facilities.

Max Capacity: Deluxe Garden View/Deluxe River View – 2, Kasara Garden View Suite/Kasara River View Suite – 3 adults/1 child.



*FROM PRICES ARE A GUIDE ONLY, subject to change and availability and are in Australian Dollars. Prices are per room per night for 2 people, unless otherwise specified and based on the lowest room category for travel in low season. For full terms and conditions, refer to the Booking Conditions on the inside back cover of this brochure.

PATTAYA

Pattaya is famous for its nightlife, entertainment and bars, however it offers many activities that cater for all ages. From sunrise to sunset, beaches are buzzing with life. After sunset, the lights in the streets go up and the nightlife scene kicks into action. Being the closest beach resort to Bangkok, it is the perfect getaway for locals and visitors.

SEE

- Khao Pattaya View Point is the best place to photograph Pattaya's crescent bay
- View the 'Sanctuary of Truth', A 105 metre tall structure carved completely from teak wood

DO

- Walk up the staircase leading to the 18 metre tall golden Big Buddha, the largest in the region
- Stroll through the immaculate landscaped gardens of Nong Nooch Tropical Gardens

EAT & DRINK

- For superb views and great food visit rooftop restaurant Horizon
- Feast on traditional Thai food at one of Pattaya's many street vendors

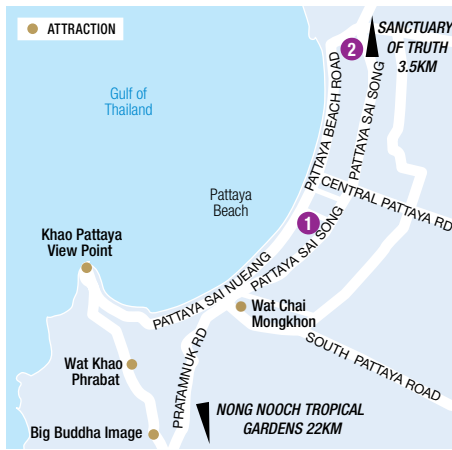
PRIVATE TRANSFERS

Bangkok Airport to/from Pattaya one way without guide (125km). By private car (1 to 2 People): **\$143*** per vehicle, (3 to 5 people): **\$176*** per vehicle.

Shared scheduled transfers also available.



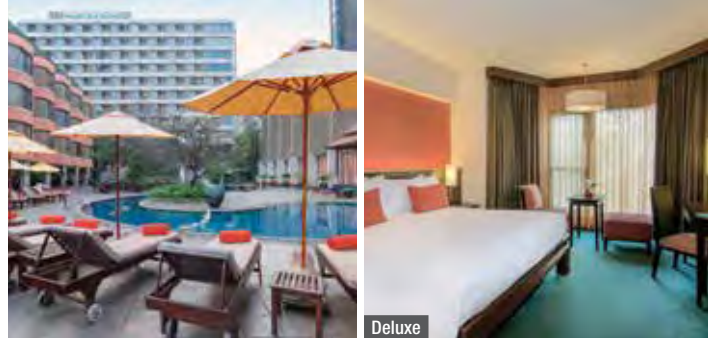
Pattaya Bay



Sanctuary of Truth

REF.	HOTELS	PAGE
1	The Bayview Pattaya	48
2	Dusit Thani Pattaya	48

THE BAYVIEW PATTAYA



310/2 Moo 10, Banglamung, Pattaya
MAP PAGE 48

From **\$152***

- ❖ Five minute walk to Pattaya Beach
- ❖ Exotica Bar & Lounge offers billiards, board games and a library
- ❖ Rooms are bright with views over either the bay, pool or city

Includes full buffet breakfast daily.

Location: Easy access to shopping and entertainment precinct. Distances: Shops 100m, Beach 500m.

Property Features: Pools (2), Restaurant, Bars (2), 24 hour room service, Gym, 260 rooms.

Room Features: Air-conditioning, Balcony (Deluxe Sea View Rooms), Tea/coffee making facilities, Mini bar, Cable TV, Bathrobe, Safe.

Max Capacity: Deluxe/Deluxe Sea View – 3.

DUSIT THANI PATTAYA



240/2 Pattaya Beach Road, Pattaya
MAP PAGE 48

From **\$206***

- ❖ The resort has direct access to two beachfronts
- ❖ Premium Sea View and Club rooms have panoramic views over Pattaya Bay
- ❖ Dusit Club Privileges with added benefits available

Includes full buffet breakfast daily.

Location: On the northern tip of Pattaya Beach within a short walking distance to shops and entertainment. Distances: Shops 750m, Beach 300m.

Property Features: Pools (2), Restaurants (2), Bars (2), Bakery, Room service, Kids club 4-12 years (extra charge), Day spa, Fitness centre, 457 rooms.

Room Features: Air-conditioning, Balcony or terrace, Tea/coffee making facilities, Mini bar, Satellite TV with entertainment system, Hair dryer, Beach towels, Safe.

Max Capacity: Deluxe/Premium Garden View/Premium Sea View/1 Bedroom Suite, Club Grand Room – 3, Club Room Sea View – 2.



* FROM PRICES ARE A GUIDE ONLY, subject to change and availability and are in Australian Dollars. Prices are per room per night for 2 people, unless otherwise specified and based on the lowest room category for travel in low season. For full terms and conditions, refer to the Booking Conditions on the inside back cover of this brochure.



Thai Pavilion on Khao Tao Reservoir

HUA HIN

This royal seaside town is only a few hours from Bangkok and has a charming old world feel mixed with modern facilities. Surrounded by luxurious hotels, resorts and pristine beaches, Hua Hin is the ideal escape for relaxation, rejuvenation and indulgence.

SEE

- Wander the stunning gardens and take in the beautiful sights of Mrigadayavan Palace, by the sea
- Visit King Rama V pavilion in an open-air cave at Tham Phraya Nakhon

DO

- Play a round of golf at the Royal Hua Hin, Thailand's first golf course
- Climb the steps to the enormous statue of the monk, Luang Phor Thuad, at Wat Huay Mongkoi

EAT & DRINK

- Experience the creamiest Thai style ice cream and banana pancakes at the Hua Hin Night Markets
- Tuck into Thai prawn cakes at Oasis, a beachfront restaurant with a stunningly beautiful infinity pool

PRIVATE TRANSFERS

Bangkok Airport to/from Hua Hin one way without guide (222km). By private car (1 to 2 People): **\$164*** per vehicle, (3 to 5 People): **\$197*** per vehicle.

Shared scheduled transfers also available.



Tham Phraya Nakhon



REF.	HOTELS	PAGE
1	Centara Grand Beach Resort & Villas Hua Hin	49

CENTARA GRAND BEACH RESORT & VILLAS HUA HIN



Deluxe

1 Damnernkasem Road, Hua Hin

MAP PAGE 49

From **\$260***

- ❖ Stylish iconic hotel first opened in the early 1920s
- ❖ Rooms have wooden floors, high ceilings and furnished balconies
- ❖ Club level rooms provide guests with added benefits

Includes full buffet breakfast daily.

Location: On the beach and only a short stroll to the shops and markets. Distances: City centre 500m, Beachfront.

Property Features: Pools (4), Restaurants (4), Bar, 24 hour room service, Kids club 3-12 years (free), E-Zone 13-17 years (free), Day spa, Gym, Tennis court, Volleyball, Library, 24 hour reception, 251 rooms.

Room Features: Air-conditioning, Balcony or terrace, Tea/coffee making facilities, Mini bar, Cable TV, Hair dryer, Safe.

Max Capacity: Deluxe/Premium Deluxe/Junior Suite/Deluxe Suite/Duplex Suite, Premium Deluxe Ocean View – 3, Premium Deluxe Club/Family Room/Family Room Pool Terrace – 3 adults or 2 adults/2 children, Villa One Bedroom Garden View/Villa One Bedroom Private Pool – 2, Villa One Bedroom Suite Private Pool – 2 adults or 2 adults/2 children.



*FROM PRICES ARE A GUIDE ONLY, subject to change and availability and are in Australian Dollars. Prices are per room per night for 2 people, unless otherwise specified and based on the lowest room category for travel in low season. For full terms and conditions, refer to the Booking Conditions on the inside back cover of this brochure.

ACCOMMODATION INDEX

BANGKOK

Amari Bangkok	14
Banyan Tree Bangkok	15
LIT BANGKOK Hotel & Residence	14
Mode Sathorn	14
Montien Hotel Surawong Bangkok	15
Pathumwan Princess Hotel	15
Siam@Siam Design Hotel Bangkok	14

Other Accommodation Options

Centara Watgate Pavillion Hotel Bangkok • Novotel Suvarnabhumi Airport • Shangri-La Bangkok

PHUKET

Amari Phuket	23
Andaman Beach Suites Hotel	19
Angsana Laguna Phuket	31
Banyan Tree Phuket	31
Beyond Resort Karon	24
Beyond Resort Kata	24
Burasari Resort	20
Centara Grand Beach Resort Phuket	28
Centara Kata Resort Phuket	25
Centara Villas Phuket	25
Courtyard By Marriott Phuket, Patong Beach Resort	21
Diamond Cliff Resort and Spa	23
Grand Mercure Phuket Patong	23
Holiday Inn Resort Phuket	20
Holiday Inn Resort Phuket Karon Beach	26
Katathani Phuket Beach Resort	27
The Kee Resort & Spa	22
Phuket Graceland Resort and Spa	22
Sunprime Kamala Beach	30

Sunwing Kamala Beach	31
The Old Phuket	26
The Shore at Katathani	29

Other Accommodation Options

Andaman Seaview Phuket • Patong Resort Hotel • Seaview Patong Hotel • Sunset Beach Resort

KOH PHI PHI

SAii Phi Phi Island Village	33
-----------------------------	----

Other Accommodation Options

P.P. Erawan Palms Resort • Zeavola Resort

KOH YAO

Santhiya Koh Yao Yai Resort & Spa	33
-----------------------------------	----

KHAO LAK

Khao Lak Merlin Resort	35
Khaolak Laguna	35
The Sands Khao Lak by Katathani	35

Other Accommodation Options

The Sarojin

KRABI

AVANI Ao Nang Cliff Krabi Resort	37
Centara Ao Nang Beach Resort & Spa Krabi	37
Dusit Thani Krabi Beach Resort	37

Other Accommodation Options

Centara Anda Dhevi Resort & Spa • Centara Grand Beach Resort and Villas, Krabi

KOH SAMUI

Amari Koh Samui	40
Baan Samui Resort	40

Bandara Resort and Spa	40
Beyond Kandabuuri	41
Centara Reserve Samui	44
Chaba Cabana Beach Resort	41
Chaweng Regent Beach Resort	43
Matcha Samui Resort (formerly Chaba Samui Resort)	40
Melati Beach Resort & Spa	44
Melia Koh Samui	45
Nora Beach Resort & Spa	42
Nora Buri Resort & Spa	42
OZO Chaweng Samui	41

KOH PHANGAN

Santhiya Koh Phangan Resort & Spa	45
-----------------------------------	----

CHIANG MAI

Anantara Chiang Mai Resort	47
dusitD2 Chiang Mai	47

Other Accommodation Options

Khum Phaya Resort & Spa

PATTAYA

The Bayview Pattaya	48
Dusit Thani Pattaya	48

Other Accommodation Options

Centara Pattaya Hotel

HUA HIN

Centara Grand Beach Resort & Villas Hua Hin	49
---	----

Other Accommodation Options

Dusit Thani Hua Hin



Grand Palace, Wat Phra Keaw – Bangkok

Please read these Booking Conditions carefully as they apply to all bookings with Viva Holidays.

HOW TO BOOK

Contact your ATAS travel agent and request a reservation. All verbal quotes provided are an estimate only and subject to change until confirmed in writing.

PRICES & CONDITIONS

This brochure was produced on 15 December 2023. Unless otherwise stated, prices are in Australian dollars and include GST where applicable. Exchange rates used when pricing this brochure are as at 5 December 2023. All prices are subject to availability, subject to change and can be withdrawn or varied without notice. Prices are to be used as a guide only. Accommodation prices are based on the lowest room category in low season. All other prices are based on travel in low season. Some prices are based on dynamic rates, which means the price may be higher or lower than the advertised price if the price has been varied by the supplier after this brochure was printed. Price changes may occur by reason of matters outside our control which increase the cost of the Product or Service. Such factors include (without limitation) adverse currency fluctuations, fuel surcharges, or increases to taxes. Surcharges and minimum stays may apply due to demand, Christmas and New Year's Eve, school and public holidays, special events and other circumstances. All prices are the lowest available prices at the time of print and are a guide only. Please check all prices, availability, fees, conditions and information with your travel agent before booking.

If we must change any part of your booking for reasons beyond our control, for example, an Accommodation Supplier overbooks accommodation, or if there is an increase in taxes or Supplier charges, we will notify you. If any such changes result in your holiday costing more or otherwise being materially different from that originally booked, you may cancel the booking and we will refund any monies already paid less any charges levied by Suppliers.

PRICES DO NOT INCLUDE

Anything not specifically indicated as being an inclusion.

OMISSIONS & ERRORS

While every effort is made to ensure the accuracy and currency of the information in the brochures, errors or omissions may occur. All errors and omissions identified post the date of publication are notified to our retail partners to advise you. Please check with your agent for all up-to-date corrections, including prices and inclusions.

DEPOSITS & FINAL PAYMENTS

Deposit

A minimum non-refundable deposit of \$55 per person is payable within 7 days of confirmation of your booking. You will be notified at the time of booking if any additional deposit is required. All deposits are non-refundable for changes of mind or cancellations by you (subject to your rights under the Australian Consumer Law).

Final Payment

Final payment of your holiday cost is required no later than 30 days prior to departure or by sale end date or by the payment deadline specified in individual package conditions, whichever is earlier. Some services may require full payment at the time of booking. For bookings made less than 31 days prior to travel, full payment of holiday cost is required at the time your booking is confirmed.

Please ensure payments are made by the due dates. If this does not happen, our system will automatically cancel the booking without notice or liability to you.

Only upon payment of the full cost of your holiday do you have a final booking with the Supplier of the relevant good and/or service. In arranging your booking, Viva Holidays is acting as the agent of the Supplier of the relevant Product and at no time do you have a contract with Viva Holidays.

CREDIT & DEBIT CARD SURCHARGES

A fee will apply for payments made by debit and credit cards. Fees may vary depending on card type. Please check this fee with us or your travel agent when booking.

FEES

Amendment Fees

If you wish to change your booking prior to departure, an amendment fee of \$30 will be charged if the overall value of the booking remains the same or decreases, in addition to any fees imposed by the Supplier of each service booked.

Late Booking Fees

A fee of \$30 will be charged for all bookings made less than 7 days prior to travel.

All fees can be varied without notice.

CANCELLATIONS & REFUNDS

Prior to Final Payment

Your deposit is forfeited.

After Final Payment

There will be no refund of your deposit, in addition to any fees imposed by the Supplier, which may be up to 100% of monies paid.

After Travel

There will be no refund if you cancel your booking once travel has commenced. There will be no refund for unused services, except for OPEN DATED services where the service was not booked with the Supplier. Requests for refunds received more than 6 months after departure date will not be accepted.

Should a refund after departure be approved, a \$110 refund processing fee will apply.

RESPONSIBILITY

Viva Holidays acts as an agent for the Suppliers (transport, tour, event or accommodation providers) who provide the various goods and/or services (Products). All bookings are subject to the terms and conditions and limitations of liability imposed by each Supplier. It is therefore important for you to obtain and read the applicable Supplier's terms and conditions as they may limit or exclude their liability to you.

In producing this brochure, we have used information provided by Suppliers. Irrespective of any measures taken by us to ensure the information contained in this brochure is accurate at the time of printing, Viva Holidays disclaims and will be exempt from liability in respect of anything misleading, false, incomplete or inaccurate and any errors, misdescription and all associated disappointment, loss, expense, damage, inconvenience, delay, death, shock, illness or injury, however caused.

Viva Holidays does not control the manner in which Products featured within this brochure are provided. Viva Holidays disclaims and will be exempt from liability for anything to do with the supply of such Products. This includes liability (whether as a matter of contract, tort, statute, restitution, or otherwise) for any direct, indirect or consequential loss, liability, claim, cost, expense, proceeding, demand, penalty, disappointment, death, injury, illness, shock, inconvenience or delay. This limitation of liability also applies irrespective of the cause, including negligence of us or a Supplier, withdrawal, cancellation or failure to provide a Product, delay, any variation in the Product, the provision of substitute Products or a change in the Supplier. Without limitation, Viva Holidays will not be responsible if the Product is not available due to inclement weather conditions or other acts of God, civil disturbances, fire, floods, acts of Government or any other authorities, accident to or failure of machinery or equipment or industrial action.

MAPS & PHOTOGRAPHS

The maps in this brochure are intended as a guide only and are not to scale. They do not necessarily reflect actual routings or accommodation or attraction locations. Accommodation room photographs are representative only and actual rooms occupied may vary in decor and inclusions from those shown.

Some images used in this brochure are supplied courtesy of tourist bureaus, hotels, tour operators, Avigator Fortuner, © Dusit International, Ajisai13, Anake Seenadee, Anek Soowannaphoom, Apiguide, Dimas Frolov, Fokke Baarsen, iDuck Photographer, ikornphotography, JoeyPhoto, Kiattipong Panchee, Kiattipong Panchee, Kitti Tantibankul, Manoo Manookulkit, Netfalls Remy Musser, Oriol Querol, RALF TOOTEN, Sakdawut Tangtongsap, Saravutpics, Structuresxx, Sumrit Photo, Sven Hansche and WIKRABI.

PRODUCT DESCRIPTIONS

Product descriptions and accommodation ratings featured in this brochure are provided by the individual Suppliers. Facilities, features or ratings are subject to change at any time. Tours may not operate on certain dates and durations and departure times are approximate only. You should check at the time of booking for any changes to published information of which we may be aware.

BONDS

Bonds or credit card imprints are required by most Suppliers at the time of check-in to cover incidentals and fees not included in your holiday cost.

TRANSFERS & TOURS

Some Accommodation Suppliers provide courtesy transfers to/from the airport. It is essential that these transfers are pre-booked. Some Tour Suppliers provide complimentary pick up and return to your holiday accommodation and require a minimum number of passengers to operate. If minimum numbers are not achieved tours may be cancelled at short notice. Additionally, some Suppliers reserve the right to cancel departures for other reasons, including bad weather. Some tours and itineraries may also vary and attractions may be substituted due to seasonal conditions. Viva Holidays will not be held liable for a service variation, cancellation, delay or withdrawal, or a Supplier's failure to notify you. A full refund applies for the cancelled tour.

TRAVEL INSURANCE

We strongly recommend you take out appropriate travel insurance to cover your travel arrangements.

INTERNATIONAL TRAVEL

Each passenger is responsible for their own visa, passport (with at least 6 months validity), immigration, quarantine, customs and other requirements of the countries to be visited or transited through. Viva Holidays makes no representations as to the safety, conditions or other issues that may arise at any destination. Travel advice is available from the Australian Government at smartraveller.gov.au.

HEALTH

You must ensure you are aware of any health requirements and recommended precautions relevant to your travel and carry all necessary vaccination documentation with you to the countries to be visited. Failure to present required vaccination documentation may result in you being denied entry into a country. We recommend that you consult with your local doctor, travel medical service or specialist vaccination clinic before commencing your travel. General health advice for all destinations is also available from the Australian Government at smartraveller.gov.au.

PRIVACY

Viva Holidays collects information about you (including health information where necessary) to provide products and services to you, process your travel arrangements, facilitate your participation in loyalty programs and conduct marketing activities and market research. If the information is not provided, Viva Holidays may not be able to provide the Service requested. Viva Holidays may disclose your personal information to its related companies, carriers, travel service providers, organisations which provide services to Viva Holidays (more details are available in our Privacy Statement on our website vivaholidays.com.au) and various law enforcement agencies, airports and governments around the world for security, customs and immigration purposes. You may gain access to the information Viva Holidays holds about you by contacting our Privacy Officer in writing at 179 Normanby Road, South Melbourne VIC 3205 Australia or on privacyofficer@vivaholidays.com.au.

MONIES NOT HELD ON TRUST

All monies paid by you to us will be the property of Viva Holidays and will be a debt due and payable to the relevant Supplier (contingent on availing) once the services to which the money relates have been availed, or the relevant booking is cancelled (subject to cancellation fees). You agree and acknowledge that such monies will not be held by Viva Holidays on trust for or on behalf of you, and we may hold such monies in any account as we see fit, including with our own and/or other customer monies.

GOVERNING LAW

These conditions are governed by the laws of New South Wales, Australia and any action arising under them or in any way connected with a booking may be brought only in a court in New South Wales, Australia, subject to any law which is expressly inconsistent with this.

You acknowledge that you are 18 years of age or older and that you understand and agree with the above terms and conditions and our Privacy Policy. Please read our full booking terms and conditions at vivaholidays.com.au/policies/booking-conditions.

Travel insurance to help you on your way



nib Travel Insurance Distribution Pty Limited, ABN 40 129 262 175, AR 336467 is an authorised representative of nib Travel Services (Australia) Pty Ltd (nib), ABN 81 115 932 173, AFSL 308461 and act as nib's agent and not as your agent. This is general advice only. Before you buy, you should consider your needs, the Product Disclosure Statement (PDS), Financial Services Guide (FSG) and Target Market Determination (TMD) available from us. This insurance is underwritten by Pacific International Insurance Pty Ltd, ABN 83 169 311 193.



helloworld
TRAVEL
THE TRAVEL PROFESSIONALS



In store



13 14 15



helloworld.com.au

WE'RE PROUD TO BE
ATAS
travel accredited

VIVA
HOLIDAYS